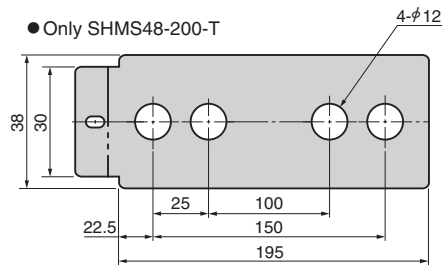
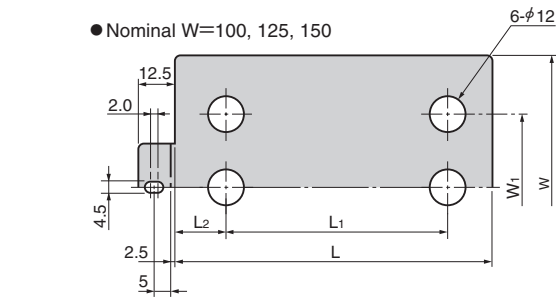
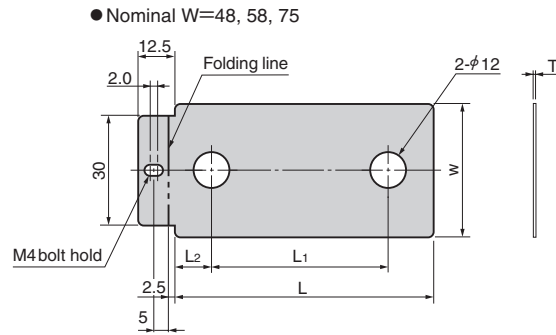
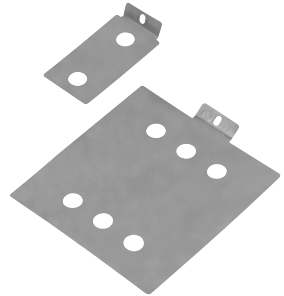


# Shim Plate

## For Wear Plate

### Slide Components

#### SHMS



〈Material〉 304 (SUS304)

T	Tolerance
0.03 0.05	±0.01
0.1 0.2 0.3	±0.02

Catalog No.	Nominal (wear plate)		Thickness T	W <sub>1</sub>	L <sub>1</sub>	L <sub>2</sub>	Actual Size W	Actual Size L
	W	L						
SHMS	48	75	0.03	—	45	12.5	38	70
		100			50	95		
		125			75	120		
		150			100	145		
		200			150	195		
		75			45	12.5		70
	58	100	0.05	—	50	—	48	95
		150			100		145	
		75			25		70	
		100			50		95	
		125			75		120	
		150			100		145	
SHMS	75	125	0.1	—	75	—	65	120
		150			100		145	
		200			150		195	
		100			50		95	
		125			75		120	
		150			100		145	
	100	150	0.2	—	100	22.5	90	145
		200			150	195		
		250			200	245		
		125			75	120		
		150			100	145		
		200			150	195		
125	250	0.3	—	50	200	115	245	
	125			75	120			
	150			100	145			
	200			150	195			
	250			200	245			
	150			100	145			
150	200	—	—	100	150	140	195	
	250			200	245			
	250			200	245			



Catalog No. **SHMS** W (Nominal) **48** - L (Nominal) **125** - T **0.1**

0.03, 0.05, and 0.1 are sold in a set of 10 pcs.

#### ■ For Operation

- SHMS can work for the Wear Plates with thickness 10 or 20 having 2 or 4 holes.
- Ensure to drill M4 tapped holes at a folding area on the Wear Plate so the shim will not be lost.

