

Wear Plate

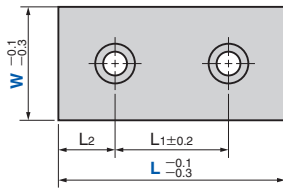
Thickness 10 mm Sintered Type

Slide Components

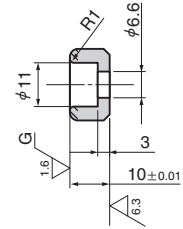
TWX (Sintered and Standard Type)



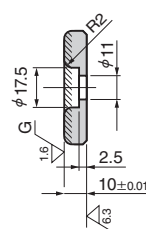
● W=18~75



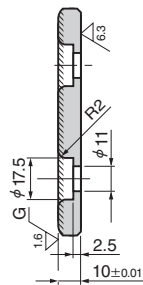
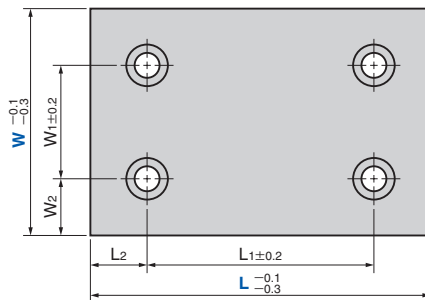
● W=18



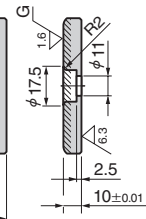
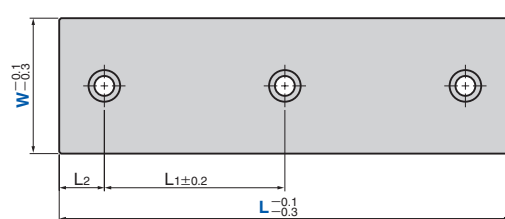
● W=28~75



● W=100 or more



● W=48, L=250
W=75, L=250



● Sliding Direction



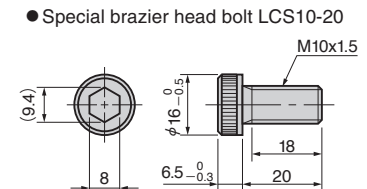
⟨Material⟩ SO#220
Thickness 1.2 mm or more
1045 (S45C) (base plate)
⟨Accessory⟩ Bolts

Catalog No.	W	L	W ₁	W ₂	L ₁	L ₂
	18*1	75			45	15
		100			50	
		125			75	25
	28	75			45	15
		100			50	
		125			75	25
	38	75			45	15
		100			50	
		125			75	25
	48	75			45	15
		100			50	
		125			75	25
	58	75			45	15
		100			50	
		125			75	25
TWX	75	150			100	
		200			150	
		250			200	50
	100	75			45	15
		100			50	
		125			75	25
	125	150			100	
		200			150	
		250			200	50
	150	150			100	
		200			150	25
		250			200	50
	180	150			100	
		200			150	25
		250			200	50
	200	150			100	
		200			150	25
		250			200	50
	250	150			100	
		200			150	25
		250			200	50
	300	150			100	
		200			150	25
		250			200	50
	350	150			100	
		200			150	25
		250			200	50
	400	150			100	
		200			150	25
		250			200	50
	450	150			100	
		200			150	25
		250			200	50
	500	150			100	
		200			150	25
		250			200	50
	550	150			100	
		200			150	25
		250			200	50
	600	150			100	
		200			150	25
		250			200	50
	650	150			100	
		200			150	25
		250			200	50
	700	150			100	
		200			150	25
		250			200	50
	750	150			100	
		200			150	25
		250			200	50
	800	150			100	
		200			150	25
		250			200	50
	850	150			100	
		200			150	25
		250			200	50
	900	150			100	
		200			150	25
		250			200	50
	950	150			100	
		200			150	25
		250			200	50
	1000	150			100	
		200			150	25
		250			200	50

*1 Bolts are not attached to TWX18.



Catalog No.	W	L
TWX	48	150



Refer to page 112 for chamfer specification.

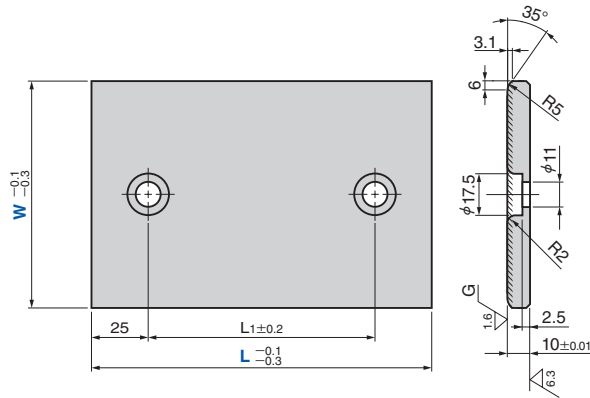
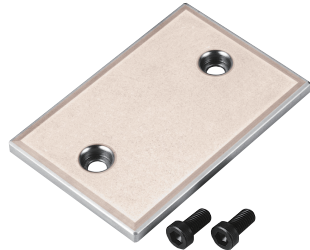
Wear Plate

Thickness 10 mm Sintered Type

Slide Components

TWXT (2-Hole Type)

CAD FILE



● Sliding Direction



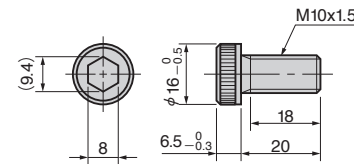
⟨Material⟩ SO#220
Thickness 1.2 mm or more
1045 (S45C) (base plate)
⟨Accessory⟩ Bolts

Catalog No.	W	L	L ₁
		100	50
		125	75
	100	150	100
		200	150
		250	200
TWXT		125	75
	125	150	100
		200	150
		250	200
	150	150	100
		200	150
		250	200



Catalog No. TWXT W 125 L 125

● Special brazier head bolt LCS10-20



● Chamfer specification

