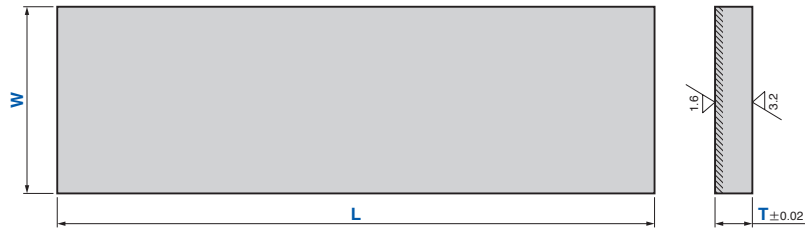


Wear Plate

Sintered Blank Type

Slide Components

SOXB



● Sliding Direction



(Material) SO#220
 Hatched Area Sintered
 Thickness 1.2 mm or more
 T=10 1045 (S45C) (base plate)
 T≥20 SS400 (base plate)

Catalog No.	W	L	T
	75		
	100		10
	125		
	150	590	
SOXB	75		
	100		20
	125		
	150		
	100	320	25



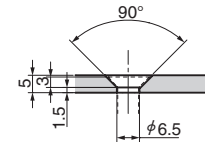
Catalog No. W - L - T
 SOXB 100 - 320 - 25

■ For Operation

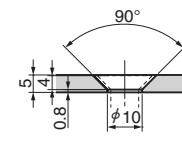
- Cut or drill the plate as required.
- When the thickness is adjusted, machine the back surface.
- Apply grease for initial lubrication before operation.

● Recommended Bolt

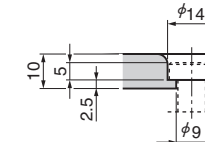
For M6
T=5



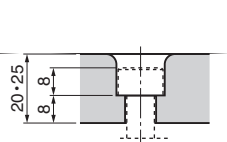
For M8
T=5



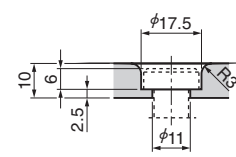
For M8
T=10



T=20, 25



For M10
T=10



T=20, 25

