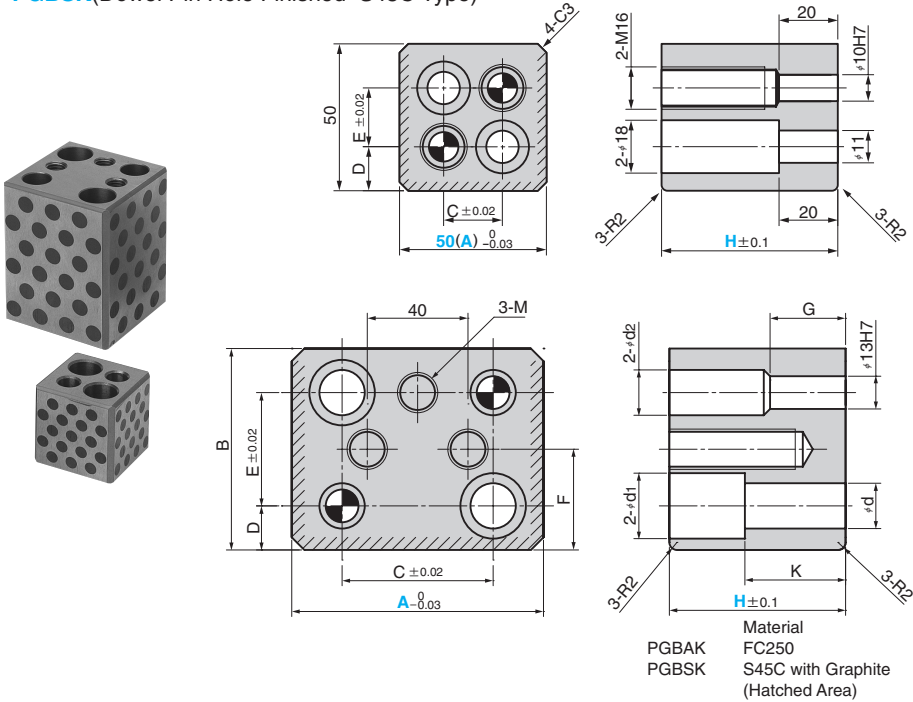


# Pad Guide Block

CENTER GUIDE TYPE WITH KEEPER PLATE

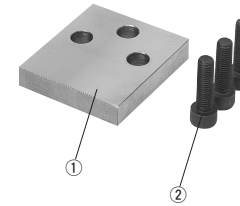
Addition **CAD FILE**

**PGBAK** (Dowel Pin Hole Finished • FC Type)  
**PGBSK** (Dowel Pin Hole Finished • S45C Type)

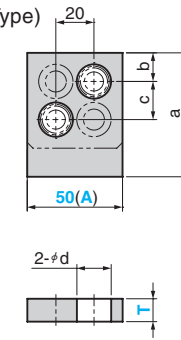


■ Keeper Plate Type

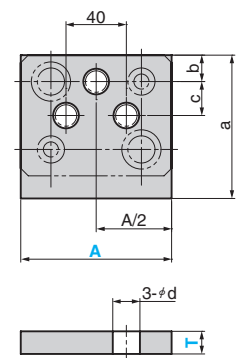
**KPLT**  
(Single-Surface Type)



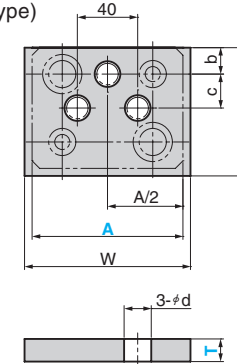
for A=50



for A=70,100



**KPLTT**  
(Three-Surface Type)



Material ①S45C  
②SCM435

B	C	D	E	F	G	K	d	d <sub>1</sub>	d <sub>2</sub>	M	Catalog No.	A	H
50	20	15	20	—	—	—	—	—	—	—	<b>PGBAK</b> (FC Type)	50	50 60 90
70	40	15	40	35	25	30	13	20	16	M12		70	70 90
80	60	17.5	45	40	30	40	18	26	16	M16		100	90
50	20	15	20	—	—	—	—	—	—	—	<b>PGBSK</b> (Steel Type)	50	50 60 70 90
70	40	15	40	35	25	30	13	20	16	M12		70	70 90
80	60	17.5	45	40	30	40	18	26	16	M16		100	90 130*

d	②Attached bolt	a	b	c	Catalog No.	A	T
18	M16×40	65	15	20	<b>KPLT</b>	50	12
13	M12×40	85	15	20		70	15
17	M16×50	95	17.5	22.5		100	

d	②Attached bolt	W	a	b	c	Catalog No.	A	T
13	M12×40	80	75	15	20	<b>KPLTT</b>	70	15
18	M16×50	110	85	17.5	22.5		100	

Order **Catalog No.** **A** - **H** \*H=130 is PGBSK only.

<b>PGBAK</b>	50	-	60
<b>PGBSK</b>	100	-	90

Option

Option Code	Specification
<b>HB</b>	Replace to Hex. Head bolt from Hex.Socket Head cap screw (②).
<b>KP</b>	Keeper plate (KPLT) and Hex. Socket cap screw are attached.
<b>TKP</b>	Keeper plate (KPLTT) and Hex. Socket cap screw are attached.

Order **PGBSK** 100 - 90 - **TKP**  
**PGBAK** 50 - 60 - **KP** - **HB**

Order **Catalog No.** **A** - **T**

<b>KPLT</b>	70	-	15
-------------	----	---	----



Example

