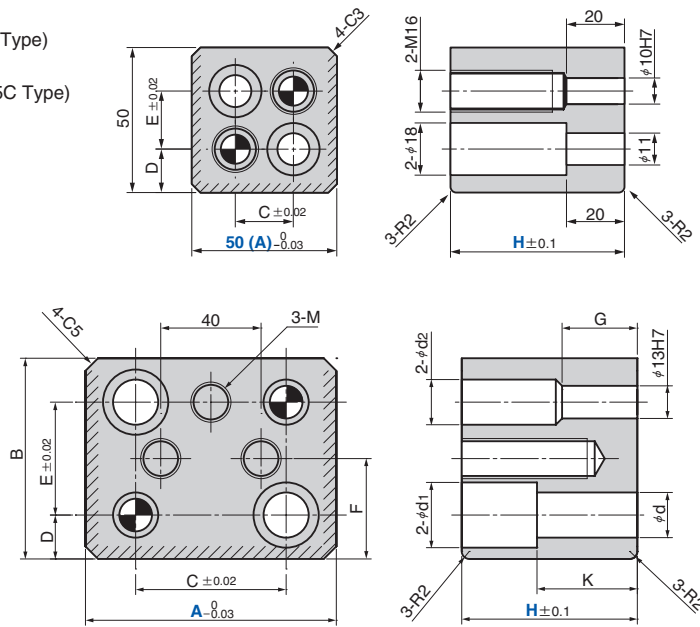
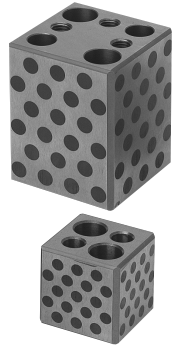


# Pad Guide Block

## Strippers and Pads

**PGBAK**  
(Dowel Hole Finished-FC Type)

**PGBSK**  
(Dowel Hole Finished-S45C Type)



PGBAK (Material) SO#50F  
PGBSK (Material) SO#50S45C

Catalog No.	A	H	B	C	D	E	F	G	K	d	d <sub>1</sub>	d <sub>2</sub>	M
PGBAK	50	50 60 90	50	20	15	20	—	—	—	—	—	—	—
	70	70 90	70	40	15	40	35	25	30	13	20	16	M12
	100	90	80	60	17.5	45	40	30	40	18	26	16	M16
PGBSK	50	50 60 70 90	50	20	15	20	—	—	—	—	—	—	—
	70	70 90	70	40	15	40	35	25	30	13	20	16	M12
	100	90 130*1	80	60	17.5	45	40	30	40	18	26	16	M16

\*1 H=130 is PGBSK only.



Catalog No.	A	H	Option
PGBAK	50	60	
PGBSK	100	90	
PGBSK	100	90	- TKP
PGBAK	50	60	- HB - KP



Option Code	Specification
HB	Replace to Hex. Head bolt from Hex. Socket Head cap screw (2).
KP	Keeper plate (KPLT) and Hex. Socket cap screw are attached.
TKP	Keeper plate (KPLTT) and Hex. Socket cap screw are attached.

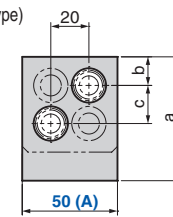
● Keeper Plate Type



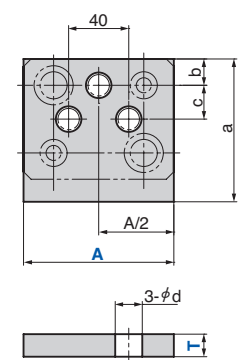
**KPLT**  
(Single-Surface Type)



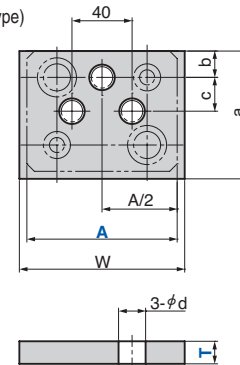
● A=50



● A=70, 100



**KPLTT**  
(Three-Surface Type)



(Material) 1045 (S45C)

Catalog No.	A	T	d	② Attached bolt	a	b	c
KPLT	50	12	18	M16x40	65	15	20
	70	15	13	M12x40	85	15	20
	100	15	17	M16x50	95	17.5	22.5

Catalog No.	A	T	d	② Attached bolt	W	a	b	c
KPLTT	70	15	13	M12x40	80	75	15	20
	100	15	18	M16x50	110	85	17.5	22.5



Catalog No.	A	T
KPLT	70	15

