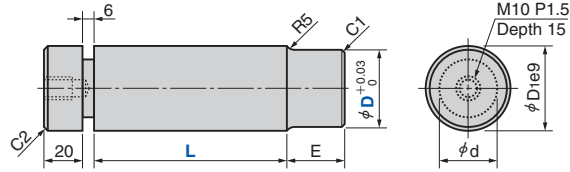


Side Pin

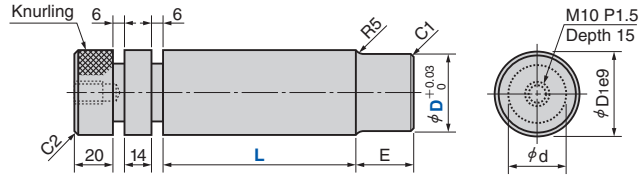
Strippers and Pads

SPAT (Single Type)



(Material) 1045 (S45C)
(Hardness) HRC20~25
(Surface Treatment) Black oxide

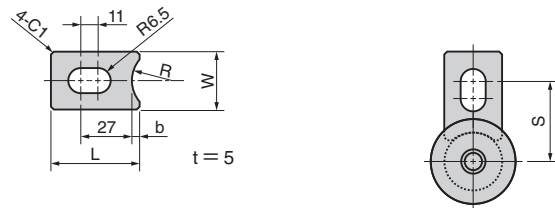
SPBT (Double Type)



(Material) 1045 (S45C)
(Hardness) HRC20~25
(Surface Treatment) Black oxide

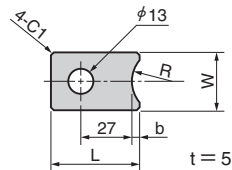
STPT1 (Stopper Type T)

STPT2 (Stopper Type T)
(Oblong Hole Type)



STPM1 (Stopper Type M)

STPM2 (Stopper Type M)
(Round Hole Type)



(Material) 1045 (S45C)
(Surface Treatment) Black oxide

| Catalog No. | D | L | D1 e9 | | | d | E | S | Allowable Load [N (kgf)] | |
|--------------|----|-----|-------|------------------|----|----|-----------------|-------------------|---|-----------------------------|
| | | | | | | | | | Impact and Repeated Load Safety Factor 40 | Static Load Safety Factor 5 |
| SPAT | 20 | 40 | 22 | -0.040 -0.092 | 14 | 35 | 25 | 581 (59) | 4650 (474) | |
| | | 60 | | | | | | | | |
| | | 80 | | | | | | | | |
| SPAT | 30 | 60 | 32 | | 20 | 38 | 1962 (200) | 15692 (1600) | | |
| | | 80 | | | | | | | | |
| | | 100 | | | | | | | | |
| SPAT | 40 | 60 | 42 | -0.050 -0.112 | 30 | 43 | 4650 (474) | 37196 (3793) | | |
| | | 80 | | | | | | | | |
| | | 100 | | | | | | | | |
| SPAT SPBT | 50 | 80 | 52 | | 40 | 48 | 9081 (926) | 72649 (7408) | | |
| | | 100 | | | | | | | | |
| | | 120 | | | | | | | | |
| SPAT | 60 | 100 | 62 | -0.060 -0.134 | 50 | 53 | 15692 (1600) | 125538 (12801) | | |
| | | 120 | | | | | | | | |
| | | 140 | | | | | | | | |
| SPAT | 70 | 120 | 72 | | 60 | 58 | 24919 (2541) | 199350 (20328) | | |
| | | 140 | | | | | | | | |
| | | 160 | | | | | | | | |

| Catalog No. | Side Pin D | Stopper | | | |
|----------------|------------|---------|----|----|---|
| | | W | L | R | b |
| STPT1 STPM1 | 20 | 30 | 46 | 20 | 4 |
| | 30 | | | | |
| | 40 | | | | |
| STPT2 STPM2 | 50 | 50 | 49 | 35 | 7 |
| | 60 | | | | |
| | 70 | | | | |

A In case of set order (Side pin and stopper), stopper type to be added in the end.
STPT1·STPT2Type T
STPM1·STPM2Type M



| Catalog No. | D | L | Stopper Type |
|-------------|----|-----|--------------|
| SPAT | 40 | 80 | M |
| SPAT | 50 | 100 | |