

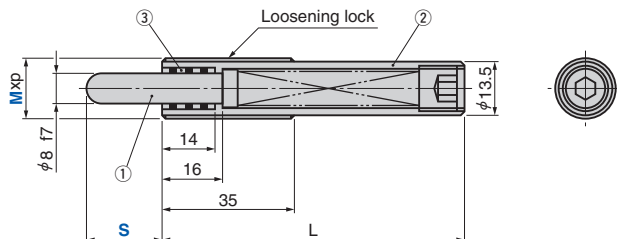
Spring Plunger

Oilless Bushing Type

Die Setting Components

PRJM (Heavy Load Type)

PRJL (Light Load Type)



(Material) ① 1045 (S45C)
HRC55 or more
② 1045 (S45C)
HRC28~35
③ SO#50SP2

Catalog No.	M	Travel S	Load [N (kgf)]		MxP	L
			Initial	Final		
PRJM	16	20	24 (2.4)	186 (19.0)	M16xP2.0	80
		30	40 (4.1)	180 (18.4)		120
		40	59 (6.0)	177 (18.0)		150

Catalog No.	M	Travel S	Load [N (kgf)]		MxP	L
			Initial	Final		
PRJL	16	30	4 (0.4)	47 (4.8)	M16xP2.0	80
		50	13 (1.3)			150
		60	11 (1.1)	45 (4.6)		200
		70	5 (0.5)	40 (4.1)		
		80	2 (0.2)	38 (3.9)		

* Please do not use the rear hex socket for installation or removal.



Order

Catalog No. M — S
PRJM 16 — 40

▶ Refer to page 29 for plunger wrench.

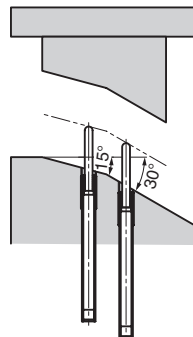
■ Durability test

The durability test was performed 500,000 times with the procedures shown in the figure below.

The test was performed on the slope of 15° and 30°. Each test did not show problems such as galling, seizure or damage.

(Contents of the test)

- Testing material : PRJL 16-50
- Testing machine: 110-ton press
- Number of strokes: 500,000 strokes
- Stroke speed : 35SPM
- No lubrication

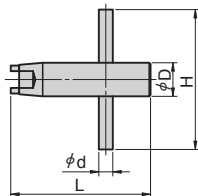


Plunger Wrench

Die Setting Components

- SPL/SPH SPLL/SPLH SPXL/SPXH NSPS/NSPL Plunger Wrench

PW



Catalog No.	Plunger M	H	d	D	L
	5	40	3	6	40
	6				
PW	8	45	4	8	45
	10			10	
	12	50	5	12	50
	16	70	8	16	52
	24	80	12	24	62



Catalog No.

PW

M

12

■ For Operation

Please use a flat-head screwdriver for the M4 spring plunger.

- PRJM/PRJL Plunger Wrench

PRJR16



Catalog No.

PRJR16



Catalog No.

PRJR16