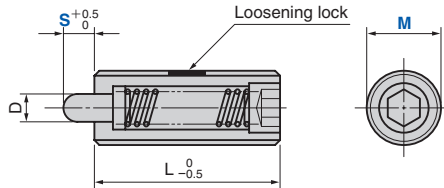


Spring Plunger

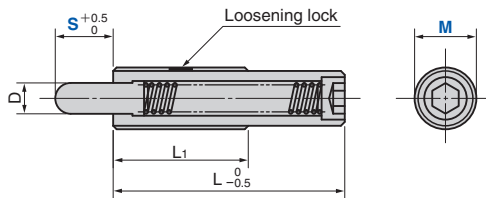
Nylon Nose Type

Die Setting Components

NSPS (Short Travel Type)



NSPL (Long Travel Type)



〈Material〉 Nose POM
Thread S45C

Catalog No.	M	Travel S	D	L	MxP	Load [N (kgf)]	
						Initial	Final
NSPS	5	3	2.0	20	M 5xP0.8	2.0 (0.2)	9.8 (1.0)
	6		2.5	25	M 6xP1.0	5.9 (0.6)	
	8		3.1		M 8xP1.25		
	10	5	3.8	30	M10xP1.5	14.7 (1.5)	
	12		5.5		M12xP1.75		

Catalog No.	M	Travel S	D	L	L ₁	MxP	Load [N (kgf)]	
							Initial	Final
NSPL	12	10	5.5	43		M12xP1.75	2.9 (0.3)	19.6 (2.0)
		10						5.9 (0.6)
	16	15	8.0	60	35	M16xP2.0	3.9 (0.4)	39.2 (4.0)
		20					4.9 (0.5)	
		30					2.9 (0.3)	
24	15	10.0	60	45	M24xP3.0	19.6 (2.0)	98.1 (10.0)	

* Please do not use the rear hex socket for installation or removal.



Catalog No.	M	—	S
NSPS	8	—	3
NSPL	16	—	20

■ For Operation

- The anti-loosening treatment will lose its effect once loosened. When reusing, please apply an anaerobic adhesive for screws.
- For installation, please use the designated wrench.

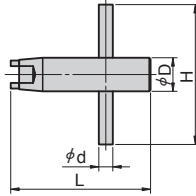
▶ Refer to page 29 for plunger wrench.

Plunger Wrench

Die Setting Components

- SPL/SPH SPLL/SPLH SPXL/SPXH NSPS/NSPL Plunger Wrench

PW



Catalog No.	Plunger M	H	d	D	L
	5	40	3	6	40
	6				
PW	8	45	4	8	45
	10			10	
	12	50	5	12	50
	16	70	8	16	52
	24	80	12	24	62



Order

Catalog No.

PW

M

12

■ For Operation

Please use a flat-head screwdriver for the M4 spring plunger.

- PRJM/PRJL Plunger Wrench

PRJR16



Catalog No.

PRJR16



Order

Catalog No.

PRJR16