

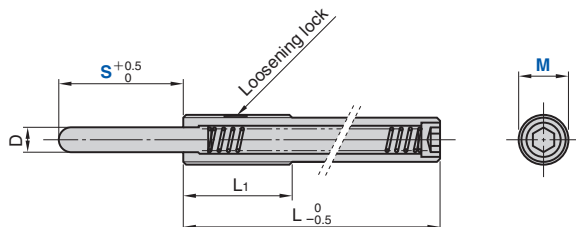
Spring Plunger

Super Long Type

Die Setting Components

SPXL (Light Load Type)

SPXH (Heavy Load Type)



<Material> Nose S45C
 Thread S45C
 <Hardness> Nose HRC57~63
 <Surface Treatment> Nose SPXL Trivalent chromate coating
 Nose SPXH Black oxide coating

Catalog No.	M	Travel S	D	L	L ₁	MxP	Load [N (kgf)]	
							Initial	Final
SPXL	16	40	8.0	125	35	M16xP2.0	4.9 (0.5)	39.2 (4.0)
		50		155			19.6 (2.0)	
		60		159			2.9 (0.3)	
		70		185			3.4 (0.3)	
		80		185			19.6 (2.0)	

Catalog No.	M	Travel S	D	L	L ₁	MxP	Load [N (kgf)]	
							Initial	Final
SPXH	16	40	8.0	125	35	M16xP2.0	6.9 (0.7)	78.5 (8.0)
		50		155			29.4 (3.0)	
		60		159			3.9 (0.4)	
		70		185			5.5 (0.6)	
		80		185			29.4 (3.0)	

* Please do not use the rear hex socket for installation or removal.



Order

Catalog No.	M	—	S
SPXL	16	—	50
SPXH	16	—	80

■ For Operation

- The anti-loosening treatment will lose its effect once loosened. When reusing, please apply an anaerobic adhesive for screws.
- For installation, please use the designated wrench.

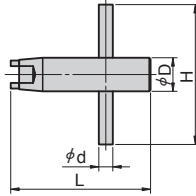
▶ Refer to page 29 for plunger wrench.

Plunger Wrench

Die Setting Components

- SPL/SPH SPLL/SPLH SPXL/SPXH NSPS/NSPL Plunger Wrench

PW



Catalog No.	Plunger M	H	d	D	L
	5	40	3	6	40
	6				
PW	8	45	4	8	45
	10			10	
	12	50	5	12	50
	16	70	8	16	52
	24	80	12	24	62



Order

Catalog No.

PW

M

12

■ For Operation

Please use a flat-head screwdriver for the M4 spring plunger.

- PRJM/PRJL Plunger Wrench

PRJR16



Catalog No.

PRJR16



Order

Catalog No.

PRJR16