

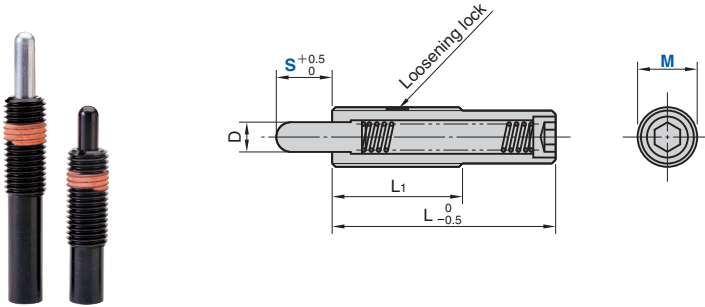
# Spring Plunger

## Long Type

### Die Setting Components

SPLL (Light Load Type)

SPLH (Heavy Load Type)



(Material) Nose S45C  
Thread S45C  
(Hardness) Nose HRC57~63  
(Surface Treatment) Nose SPLL Trivalent chromate coating  
Nose SPLH Black oxide coating

Catalog No.	M	Travel S	D	L	L1	MxP	Load [N (kgf)]	
							Initial	Final
SPLL	12	10	5.5	43		M12xP1.75	2.9 (0.3)	19.6 ( 2.0)
		10					5.9 (0.6)	
	16	15	8.0	60	35	M16xP2.0	3.9 (0.4)	39.2 ( 4.0)
		20					4.9 (0.5)	
		30					2.9 (0.3)	
24	15	10.0	60	45	M24xP3.0	19.6 (2.0)	98.1 (10.0)	

Catalog No.	M	Travel S	D	L	L1	MxP	Load [N (kgf)]	
							Initial	Final
SPLH	12	10	5.5	43		M12xP1.75	7.8 (0.8)	49.0 ( 5.0)
		10					12.7 (1.3)	
	16	15	8.0	60	35	M16xP2.0	12.7 (1.3)	78.5 ( 8.0)
		20					9.8 (1.0)	
		30					6.9 (0.7)	
24	15	10.0	60	45	M24xP3.0	47.1 (4.8)	215.7 (22.0)	

\* Please do not use the rear hex socket for installation or removal.



Order

Catalog No.	M	—	S
SPLL	16	—	10
SPLH	24	—	15

### ■ For Operation

- The anti-loosening treatment will lose its effect once loosened. When reusing, please apply an anaerobic adhesive for screws.
- For installation, please use the designated wrench.

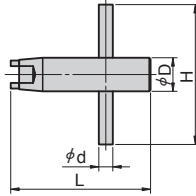
▶ Refer to page 29 for plunger wrench.

# Plunger Wrench

## Die Setting Components

- SPL/SPH SPLL/SPLH SPXL/SPXH NSPS/NSPL Plunger Wrench

PW



Catalog No.	Plunger M	H	d	D	L
	5	40	3	6	40
	6				
PW	8	45	4	8	45
	10			10	
	12	50	5	12	50
	16	70	8	16	52
	24	80	12	24	62



Catalog No.

PW

M

12

### ■ For Operation

Please use a flat-head screwdriver for the M4 spring plunger.

- PRJM/PRJL Plunger Wrench

PRJR16



Catalog No.

PRJR16



Catalog No.

PRJR16