

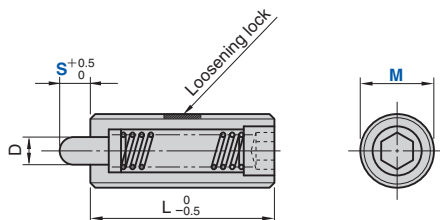
# Spring Plunger

## Short Type

### Die Setting Components

SPL (Light Load Type)

SPH (Heavy Load Type)



(Material) Nose S45C  
 Thread S45C  
 (Hardness) Nose HRC57~63  
 (Surface Treatment) Nose SPL Trivalent chromate coating  
 Nose SPH Black oxide coating

Catalog No.	M	Travel S	D	L	MxP	Load [N (kgf)]	
						Initial	Final
SPL	5	3	2.0	20	M 5xP0.8	2.0 (0.2)	9.8 (1.0)
	6		2.5	25	M 6xP1.0	5.9 (0.6)	
	8		3.1		M 8xP1.25		
	10	5	3.8	30	M10xP1.5	14.7 (1.5)	
	12		5.5		M12xP1.75		

Catalog No.	M	Travel S	D	L	MxP	Load [N (kgf)]	
						Initial	Final
SPH	4	2	1.6	15	M 4xP0.7	2.9 (0.3)	8.8 (0.9)
	5	3	2.0	20	M 5xP0.8	4.9 (0.5)	19.6 (2.0)
	6		2.5	25	M 6xP1.0	7.8 (0.8)	29.4 (3.0)
	8		3.1		M 8xP1.25	14.7 (1.5)	
	10	5	3.8	30	M10xP1.5	8.8 (0.9)	49.0 (5.0)
	12		5.5		M12xP1.75	18.6 (1.9)	

\* Please do not use the rear hex socket for installation or removal.



Order

Catalog No.	M	-	S
SPL	8	-	3
SPH	10	-	3

### ■ For Operation

- The anti-loosening treatment will lose its effect once loosened. When reusing, please apply an anaerobic adhesive for screws.
- For installation, please use the designated wrench.

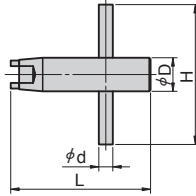
Refer to page 29 for plunger wrench.

# Plunger Wrench

## Die Setting Components

- SPL/SPH SPLL/SPLH SPXL/SPXH NSPS/NSPL Plunger Wrench

PW



Catalog No.	Plunger M	H	d	D	L
	5	40	3	6	40
	6				
PW	8	45	4	8	45
	10			10	
	12	50	5	12	50
	16	70	8	16	52
	24	80	12	24	62



Catalog No.	M
PW	12

### ■ For Operation

Please use a flat-head screwdriver for the M4 spring plunger.

- PRJM/PRJL Plunger Wrench

PRJR16



Catalog No.

PRJR16



Catalog No.
PRJR16