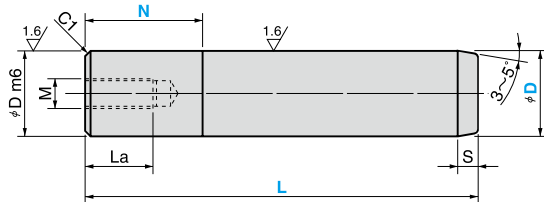


Guide Pin

STRAIGHT TYPE(TAPPED)

RoHS

RGPL



Material : SUJ2
 (B1 A 52100)
 Hardness : HRC58 or more
 Induction Hardened

D	D m6	M×Pitch	La	S	Catalog No.	D	L (Increments of 5mm)	Press fit area N (Increments of 1mm)
20	20	M8×P1.25	16	5	RGPL	20	75~225	0~100
25	25		24			25	75~275	0~100
30	30	M12×P1.75	32	30		105~300	0~120	
35	35			35		105~325	0~140	
40	40	M16×P2.0	40	40		130~400	0~200	
50	50			50		130~400	0~200	
60	60	M20×P2.5	8	60	180~400	0~200		
80	80			80				



Order

Catalog No. **RGPL** D **30** - L **200** - N **50**

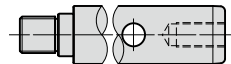


Option

Option Code	Specification					
HMC	Tapped hole for lifting is drilled at the end. Applicable to D60 and 80.					
	<table border="1"> <thead> <tr> <th>D</th> <th>Thread diameter (M) × Depth</th> </tr> </thead> <tbody> <tr> <td>60・80</td> <td>M16×32</td> </tr> </tbody> </table>	D	Thread diameter (M) × Depth	60・80	M16×32	
D	Thread diameter (M) × Depth					
60・80	M16×32					
GM	Tapped hole for Assist Pin mounting is drilled at the end. Applicable to D60 and 80.					
	<table border="1"> <thead> <tr> <th>D</th> <th>Thread diameter (M) × Depth</th> </tr> </thead> <tbody> <tr> <td>60</td> <td>M30×35</td> </tr> <tr> <td>80</td> <td>M36×45</td> </tr> </tbody> </table>	D	Thread diameter (M) × Depth	60	M30×35	80
D	Thread diameter (M) × Depth					
60	M30×35					
80	M36×45					

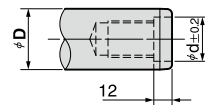


Refer to page. 20 for the assist pin details.



•GM specification

D	d
60	36
80	41



Order **RGPL 60 - 300 - 75 - GM**