

Oilless Slide Guide

Copper Alloy
L-Shaped Type

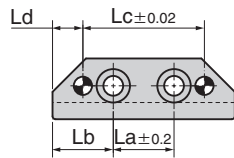
SO#50SP2



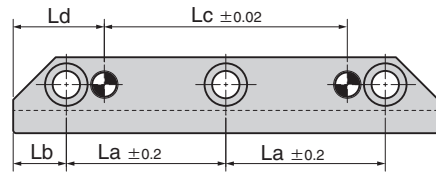
SGLXS



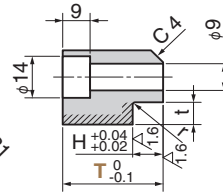
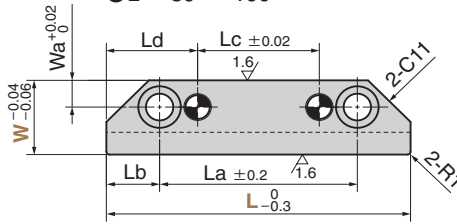
● L = 60



● L = 120 ~ 200



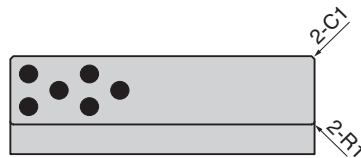
● L = 80 ~ 100



● Dowel Pin Hole

W = 20 φ 6 $\begin{matrix} +0.012 \\ 0 \end{matrix}$
W = 25 · 30 φ 8 $\begin{matrix} +0.015 \\ 0 \end{matrix}$

● Sliding Direction



Material Base Copper alloy (SO-2)
Hatched area solid lubricant (GR-1)

Operation Range

Lubricant Type	Lubricating Condition	Environment Condition	Max. Allowable Load P N/mm ²	Max. Allowable Sliding Speed V m/min	Max. Allowable PV value N/mm ² · m/min	Operation Range Temperature °C
GR-1	No lubrication	Atmosphere	100	15	150	-50 ~ +300
	Regular lubrication (Grease)			30	200	-50 ~ +150

⚠ When the product is used at high temperature (150°C or more), the embedding specification of solid lubricant is different. Please contact us for details.

Physical Properties

Specific Gravity	Hardness HB	Elongation %	Tensile Strength N/mm ²	Linear Expansion Coefficient × 10 ⁻⁵ /°C
7.9	210 or more	12 or more	755 or more	1.9

Wa	La	Lb	Lc	Ld	H	t	r	Catalog No.	W	L	T
	20	20	40	10						60	
	50		20							80	
	70		40		8	5.5	0.5		20	100	23
	45	15	60							120	28
	55		80							140	
	65		100							160	
9	45		20	30						80	
	65		40							100	
	42.5		60							120	28
	52.5	17.5	80		10	7.5		SGLXS	25	140	33
	62.5		100							160	43
	72.5		120							180	
	82.5		140				0.8			200	
	60		20							100	
	40		40							120	
11	50	20	60	40	15	11			30	140	43
	60		80							160	53
	70		100							180	
	80		120							200	



Order

Catalog No.

SGLXS

W

20

-

L

120

-

T

28