

# Oilless Slide Plate

Copper Alloy Type  
Thickness 10mm

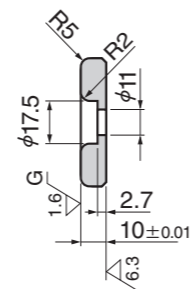
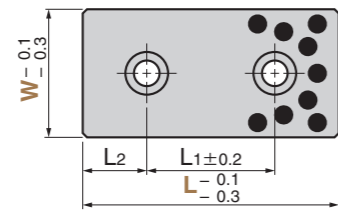
SO#50SP2



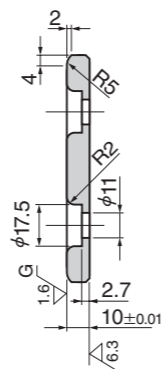
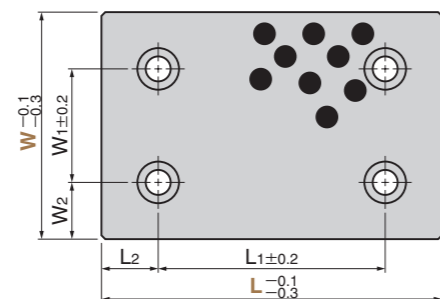
## TWP



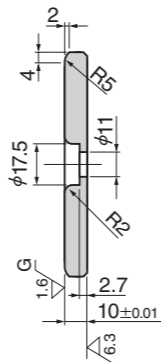
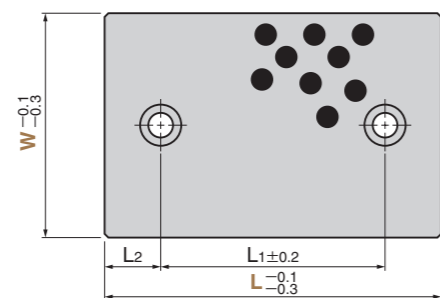
● W = 28 ~ 75



● W = 100 or more



## TWPT (Two-hole Type)

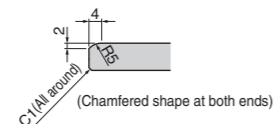


### Sliding Direction

W = 28 · 38



W = 48 or more



▲ When the product is used at high temperature (150°C or more), the embedding specification of solid lubricant is different. Please contact us for details.

Material Base Copper alloy (SO-2)  
Solid lubricant (GR-1)  
Accessory Mounting Bolt

### Operation Range

Lubricant Type	Lubricating Condition	Environment Condition	Max. Allowable Load P N/mm <sup>2</sup>	Max. Allowable Sliding Speed V m/min	Max. Allowable PV value N/mm <sup>2</sup> · m/min	Operation Range Temperature °C
GR-1	No lubrication	Atmosphere	100	15	150	-50 ~ +300
	Regular lubrication (Grease)			30	200	-50 ~ +150

### Physical Properties

Specific Gravity	Hardness HB	Elongation %	Tensile Strength N/mm <sup>2</sup>	Linear Expansion Coefficient × 10 <sup>-5</sup> /°C
7.9	210 or more	12 or more	755 or more	1.9

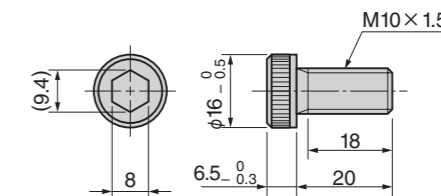
W <sub>1</sub>	W <sub>2</sub>	L <sub>1</sub>	L <sub>2</sub>	Catalog No.	W	L
		45	15			75
		50			28	100
		75	25			125
		100				150
		45	15			75
		50			38	100
		75	25			125
		100				150
		45	15			75
		50				100
		75	25			125
		100				150
		75	25	TWP	48	125
		100				150
		150				200
		45	15			75
		50			58	100
		100				150
		25				75
		50				100
		75			75	125
		100				150
		150				200
		50				100
		75	25			125
	25	100			100	150
		150				200
50		200		TWP		250
		100		TWPT		150
	37.5	150			125	200
		200				250
		100				150
100	25	100			150	150
		150				200

\* W<sub>1</sub> and W<sub>2</sub> are the dimensions only for TWP (W=100 or more).



Order	Catalog No.	W	—	L
	TWP	38	—	75
	TWPT	100	—	150

● Special brazier head bolt(LCS standard)  
LCS-10-20



■ We are ready to accept requests or orders for special parts.