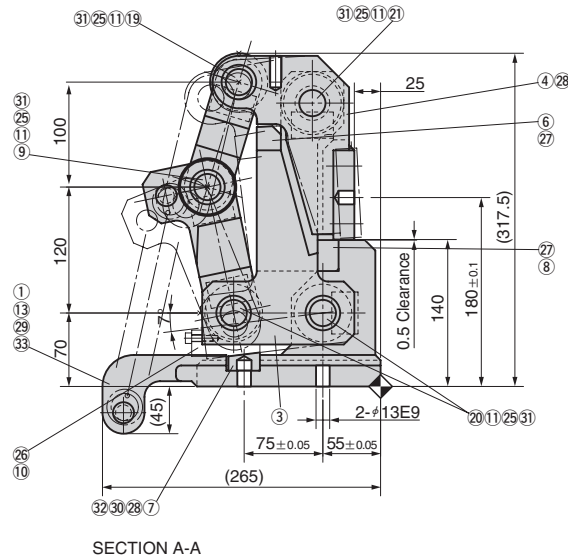
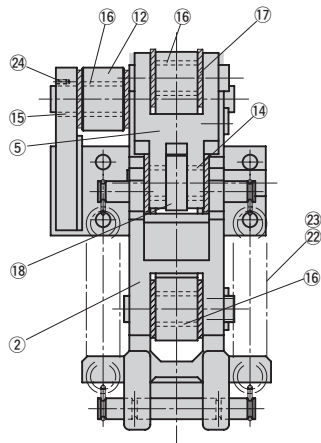
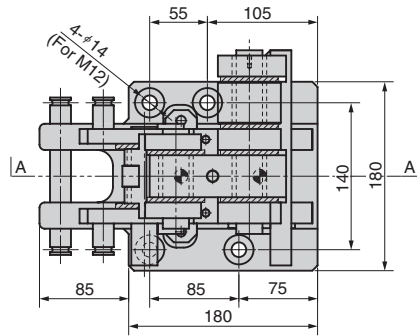
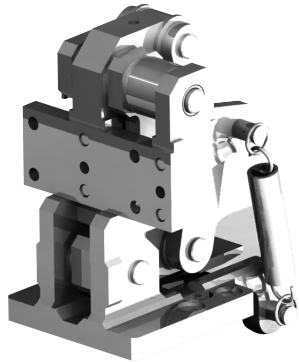
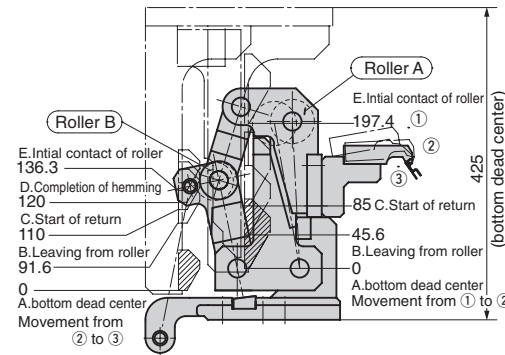


HPPWF



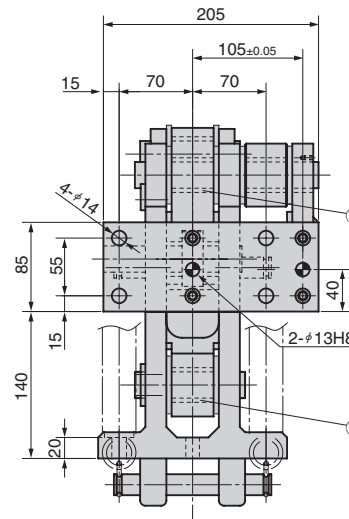
Relation in operation between driver and unit



*This figure shows the R type.
The L type is symmetrical to this figure.

Table of Components

No.	Description	Qty	Material and Remark
①	Base	1	FCD60+SS400
②	Link	1	SS400
③	Bracket	1	SS400
④	Bracket	1	SS400
⑤	Link	1	S45C
⑥	Stopper	1	S45C
⑦	Stopper	1	S45C
⑧	Stopper	1	S45C
⑨	Hinge Pin	1	S45C
⑩	Stopper for link pre-movement	1	S45C
⑪	Key	5	SS400 (HK8)
⑫	Cam Roller	1	S50C
⑬	Thick washer	4	S45C (PW12)
⑭	Bush	2	Bronze with Graphite(SOB SP2)
⑮	Bush	1	Bronze with Graphite(SOB SP2)
⑯	Bush	5	Bronze with Graphite(SOB SP2)
⑰	Washer	12	Bronze with Graphite(SOB SP2)
⑱	Roller follower	1	NAST25ZZUU
⑲	Hinge Pin	1	S45C (CLKGH25-95)
⑳	Hinge Pin	2	S45C (CLKGH25-105)
㉑	Hinge Pin	1	S45C (CLKGH25-175)
㉒	Spring	2	SWP-A(AWH32-130)
㉓	Ring	4	SS400(BSR34)
㉔	Hexagon socket head screw (concave end)	1	SCM435 M4×8
㉕	Bolts with hexagonal socket head	10	SCM435 M6×15
㉖	Bolts with hexagonal socket head	1	SCM435 M6×20
㉗	Bolts with hexagonal socket head	4	SCM435 M8×20
㉘	Bolts with hexagonal socket head	2	SCM435 M8×25
㉙	Bolts with hexagonal socket head	4	SCM435 M12×50
㉚	Spring Washer	2	SWRH For M8
㉛	Spring Washer	10	SWRH For M6
㉜	Flat washer	2	SS400 For M8
㉝	Spring Washer	4	SWRH For M12



Spring Force

Free Length (mm)	Initial Length (mm)	Initial Tensile Force N(kgf)	Final Length (mm)	Final Tensile Force N(kgf)
130.0	147.5	192.4×2 (19.6×2)	173.8	332.2×2 (33.9×2)

Catalog No.	R/L
HPPWF	R·L

Order Catalog No. - R/L
HPPWF - R

The driver conforming to this unit is HPCDF. (P.487)