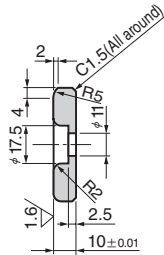
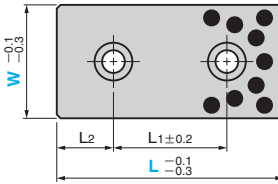


TSP

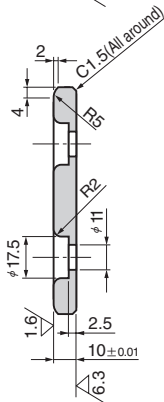
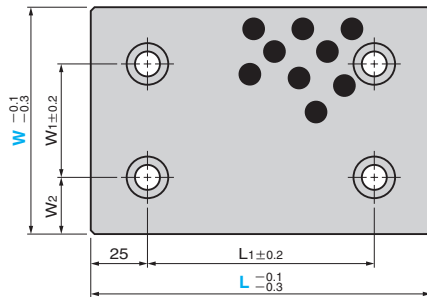


● W = 28 to 75

\*R2 only for W=28



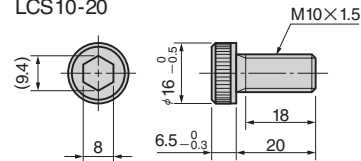
● W = 100 or more



● Sliding Direction



● Special brazier head bolt  
(LCS standard)  
LCS-10-20



Material : SKS3 with Graphite  
Hardness : HRC45 to 55  
Accessory : Mounting Bolt  
(Special Brazier Head Bolt)

W <sub>1</sub>	W <sub>2</sub>	L <sub>1</sub>	L <sub>2</sub>	Catalog No.	W	L
		45	15			75
		50			28	100
		75	25			125
		100				150
		45	15			75
		50			38	100
		75	25			125
		100				150
		45	15			75
		50		TSP	48	100
		75	25			125
		100				150
		25	25			75
		50			75	100
		75				125
		100				150
		50				100
	25	75		TSP	100	125
50		100				150
		150				200
	37.5	75			125	125
		100				150



Order

Catalog No.

TSP

W

75

-

150

L