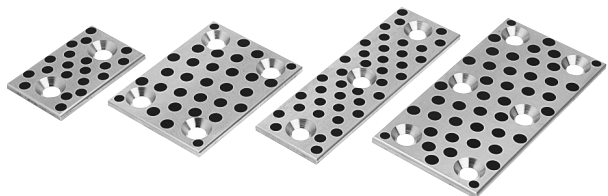
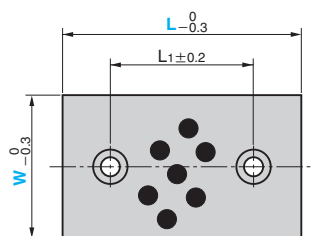


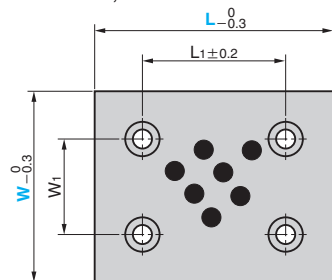
UWP



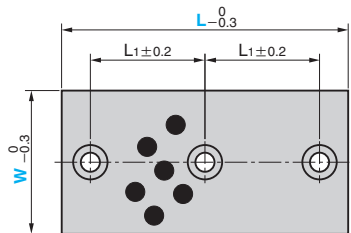
● W= 18 to 38, L= 50 to 100  
W= 48, L= 75 to 125



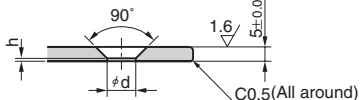
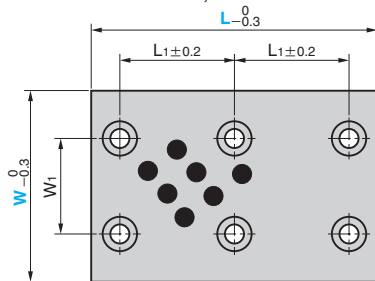
● W= 75, L= 75 to 125  
W= 100, L= 100 and 125



● W=18 to 48, L=150

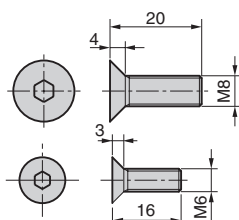


● W= 75 and 100, L= 150



⚠ When tapped holes for mounting are drilled on the mating part, chamfer corners as shown below.

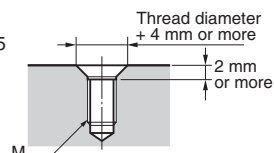
● Recommended Flat Head Bolt



● Surface and all around R1.5

● Sliding Direction  
W=18, L=28 L=50

W=28 L=75 or more



Material : Bronze with Graphite (SO#50 SP2)  
Accessory : Flat Head Bolt

W <sub>1</sub>	L <sub>1</sub>	d	h	Mounting Bolt	Catalog No.	W	L
-	20	6.5	1.5	M6	UWP	18	50
-	45						75
-	70						100
-	60						150
-	20						50
-	45					28	75
-	70						100
-	60						150
-	20						50
-	45					38	75
-	70						100
-	60						150
-	45						75
-	70	10	0.8	M8		48	100
-	95						125
-	60						150
-	45						75
45	70					75	100
-	95						125
-	60						150
70	70						100
-	95					100	125
-	60						150



Order

Catalog No. **UWP** W **75** - L **150**

■ We are ready to accept requests or orders for special parts.