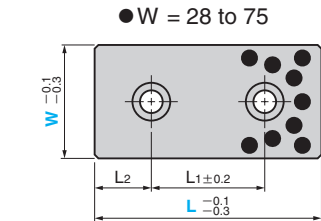
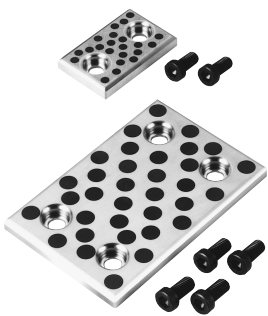
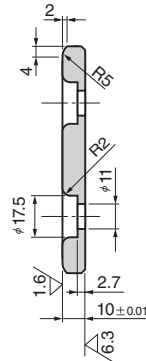
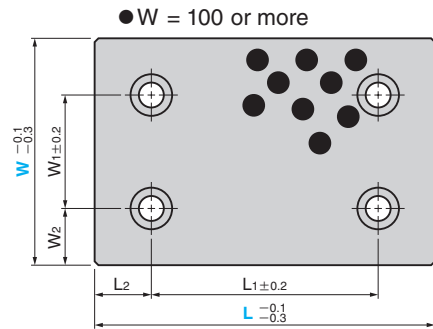
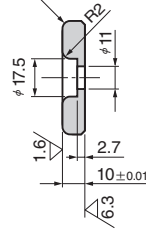


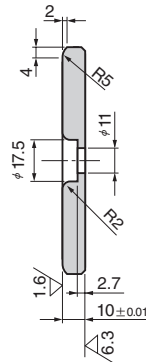
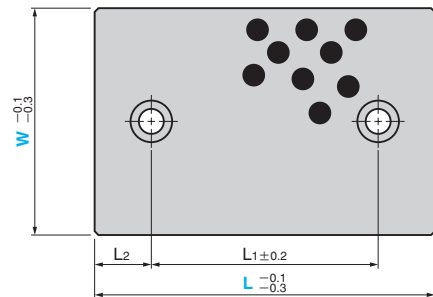
TWP
(Bronze Standard Type)



W = 28 2-R2
Chamfering for W38 or more is the same as chamfering for W100 or more.

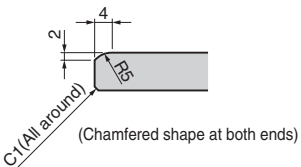


TWPT
(Bronze 2-Hole Type)



● Sliding Direction
W = 28 and 38

W = 48 or more



Material : Bronze with Graphite (SO#50 SP2)
Accessory : Mounting bolt

W1	W2	L1	L2	Catalog No.	W	L
		45	15			75
		50			28	100
		75	25			125
		100				150
		45	15			75
		50			38	100
		75	25			125
		100				150
		45	15			75
		50				100
		75	25		TWP	48
		100				125
		150				150
		45	15			75
		50				100
		75	25			125
		100				150
		150				200
		45	15			75
		50			58	100
		75	25			125
		100				150
		150				200
		45	15			75
		50				100
		75	25			125
		100				150
		150				200
		45	15			75
		50				100
		75	25			125
		100				150
		150				200
	25	100			100	150
		150				200
50		200			TWP	250
		100			TWPT	150
	37.5	150			125	200
		200				250
		100				150
		150				200

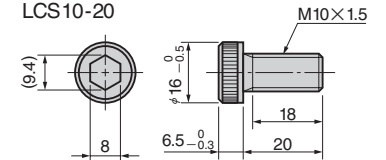
* W1 and W2 are the dimensions only for SESF (W = 100 or more).



Order

Catalog No.	W	L
TWP	75	150
TWPT	100	200

● Special brazier head bolt (LCS standard)
LCS10-20



■ We are ready to accept requests or orders for special parts.