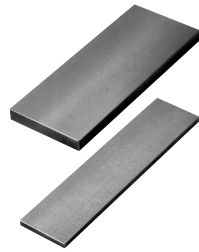


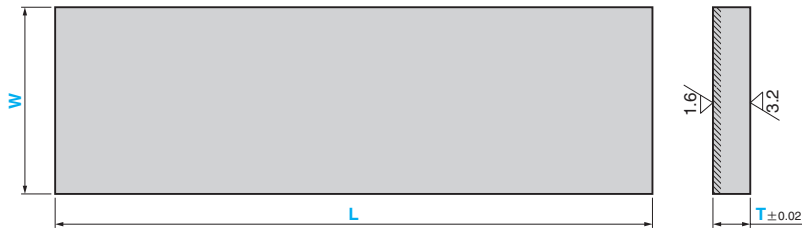
Wear Plate

SINTERED BLANK TYPE

SOXB



● Sliding Direction



Material : Copper powder sintered (SO#220)
 Hatched Area Sintered
 Thickness 1.2 mm or more
 T=10 S45C(base plate)
 T≥20 SS400(base plate)

● For Operation:

- Cut or drill the plate as required.
- When the thickness is adjusted, machine the back surface.
- Apply grease for initial lubrication before operation.

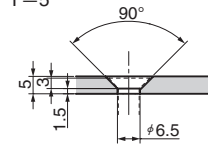
Catalog No.	W	L	T
	75		10
	100		
	125		
SOXB	150	320	20
	75		
	100		
	125		25
	150		
	100		

Order

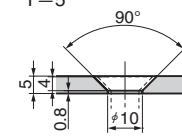
Catalog No.	W	L	T
SOXB	100	320	10

■ Recommended Bolt

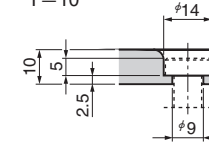
For M6
T=5



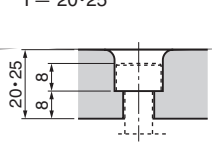
For M8
T=5



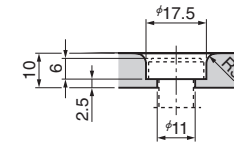
For M8
T=10



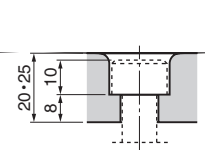
T = 20-25



For M10
T=10



T = 20-25



■ Chamfer specification SOX, SOXT

