

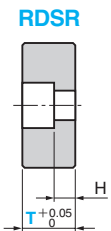
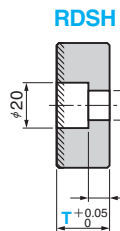
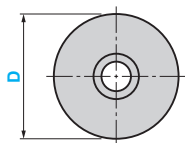
Distance Stop Block

ROUND TYPE

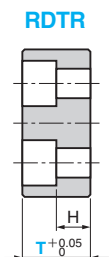
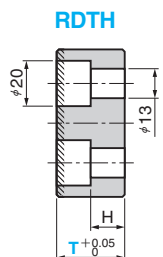
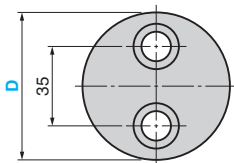
CAD FILE

Refer to the next page for the shim standard part.

RDSH (Hardened Type)
RDSR



RDTH (Hardened Type)
RDTR



Material : S45C
Area to be induction hardened (Hatched Area)
HRC55 or more



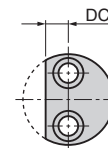
Option

Option Code	Specification
TG	When the same height is required, simultaneous grinding is carried out. Variation of dimension T is within +0.05~0.
DC	One side of dimension D is cut. $13 \leq DC < D/2$. Increment of 1 mm. It applies to RDTH and RDTR.
TN	Grooves are machined. This applies to RDSH and RDSR. (Refer to the drawing below)



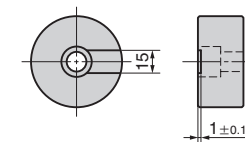
Order **RDTH 65 - 30 - N - DC20**
RDSR 90 - 30 - R - TN

●DC Specification



* It applies to RDTH and RDTR.

●TN Specification



* It applies to RDSH and RDSR.

Catalog No.	D	T	Safety Color
	40	20	
		30	
		40	
	50	30	
		40	
		50	
RDSH	60	20	
		30	R(Red)
		40	Y(Yellow)
RDSR	65	30	N(None)
		40	
		50	
	70	20	
		30	
		40	
	90	30	
		40	
		50	

Catalog No.	D	T	Safety Color
	65	30	
		40	
		50	
RDTH	80	20	R(Red)
		30	Y(Yellow)
		40	N(None)
	90	30	
		50	

■H Dimension list

T	H
20	6
30~	15



Order

Catalog No.	D	T	Safety Color
RDSH	60	30	N
RDTR	65	50	Y