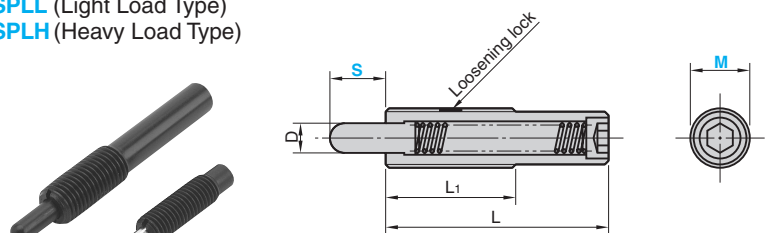


Spring Plunger

LONG TYPE

SPLL (Light Load Type)
SPLH (Heavy Load Type)



Material : Nose: SK4
Thread: SCM435
Hardness : 36 to 40 HRC
Surface treatment : Black chromating
Galvanizing

D	L	L ₁	M × P	Load N (kgf)		Catalog No.	M	Travel S
				Initial	Final			
5.5	43		M12 × P1.75	3.9(0.4)	19.6(2.0)		12	10
				12.7(1.3)				10
8.0	60	35	M16 × P2.0	9.8(1.0)	39.2(4.0)	SPLL	16	15
				12.7(1.3)				20
				17.6(1.8)				30
10.0	60	45	M24 × P3.0	19.6(2.0)	98.0(10.0)		24	15
15.0	70		M30 × P3.5	29.4(3.0)	147.0(15.0)		30	20

D	L	L ₁	M × P	Load N (kgf)		Catalog No.	M	Travel S
				Initial	Final			
5.5	43		M12 × P1.75	6.8(0.7)	39.2(4.0)		12	10
8.0	60	35	M16 × P2.0	26.4(2.7)		SPLH	16	10
				14.7(1.5)	78.4(8.0)			15
	85		16.6(1.7)		20			
	125		19.6(2.0)		30			
10.0	60	45	M24 × P3.0	39.2(4.0)	196.1(20.0)		24	15
15.0	70		M30 × P3.5	49.0(5.0)	294.1(30.0)		30	20

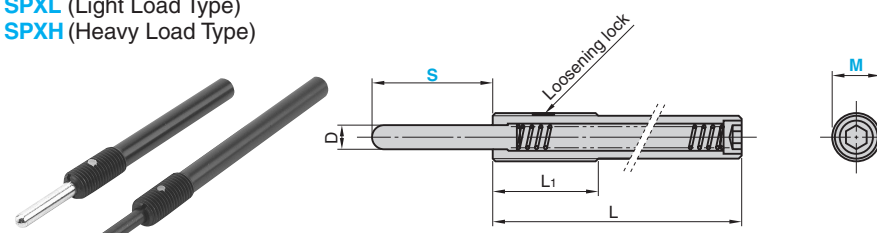
Order **Catalog No.** **M** - **S**
SPLH 16 - 20

See page 46 for plunger wrench.

Spring Plunger

SUPER LONG TYPE

SPXL (Light Load Type)
SPXH (Heavy Load Type)

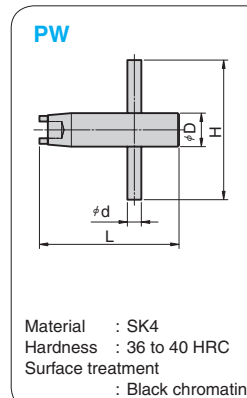


Material : Nose: SK4
Thread: SCM435
Hardness : 36 to 40 HRC
Surface treatment : Black chromating
Galvanizing

D	L	L ₁	M × P	SPXL Load N (kgf)		SPXH Load N (kgf)		Catalog No.	M	Travel S
				Initial	Final	Initial	Final			
	125			17.6(1.8)	39.2(4.0)	19.6(2.0)	78.4(8.0)	SPXL SPXH	16	40
8.0	155	35	M16 × P2.0	19.6(2.0)	49.0(5.0)	29.4(3.0)	98.0(10.0)			50
				17.6(1.8)	39.2(4.0)	19.6(2.0)	78.4(8.0)			60
				19.6(2.0)	49.0(5.0)	29.4(3.0)	147.0(15.0)			70
	200							80		

Order **Catalog No.** **M** - **S**
SPXL 16 - 50

Wrench for Plunger



Material : SK4
Hardness : 36 to 40 HRC
Surface treatment : Black chromating

H	d	D	L	Catalog No.	Plunger M
40	3	6	40	PW	5
40	3	6	40		6
45	4	8	45		8
45	4	10	45		10
50	5	12	50		12
70	8	16	52		16
80	12	24	62	24	
100	15	30	73	30	

Order **Catalog No.** **M**
PW 12