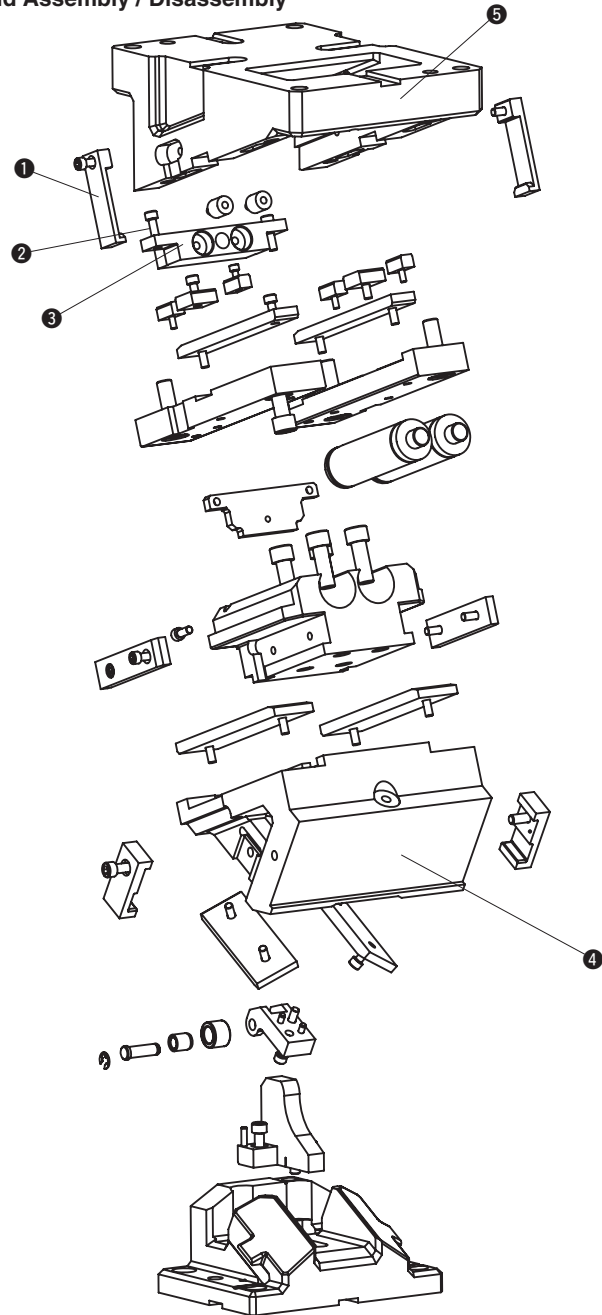


■ UCMSV165/200/250/300/400

Structure and Assembly / Disassembly



• Disassembly method of UCMSV 165 / 200 / 250 / 300 / 400

- 1) Remove safety plate (1) .
- 2) Remove hexagon socket head bolt(2) and stopper plate(3).
- 3) Remove cam slider (4) from cam holder (5) at rear of cam.

• Assembly method of UCMSV 165 / 200 / 250 / 300 / 400

- 1) Assemble components in the reverse order to which they were removed.
 - Make sure that there is no foreign matter on the slide surfaces before assembly.
 - The clearance between the cam slider and the cam holder is carefully controlled. Check that the serial number stamped on both parts is the same.
 - Please ensure that all bolts removed are re-installed and tightened.

UCMSV400 Aerial Cam Unit Table of Components

FOR PIERCE AND FLANGE

■ $\theta = 00^\circ \sim 45^\circ$

No.	Description	Qty	Material and Remark
①	Cam Driver	1	FCD600(GGG60)
②	Cam Holder	1	FCD600(GGG60)
③	Base Plate R	1	S45C
④	Wear Plate	2	Bronze With Graphite(VSM)
⑤	Hexagon Socket Head Bolt	30	SCM435 M8×20
⑥	Key	2	SS400
⑦	Key	4	SS400
⑧	Hexagon Socket Head Bolt	4	SCM435 M6×20
⑨	Hexagon Socket Head Bolt	4	SCM435 M16×45
⑩	Base Plate L	1	S45C
⑪	Stopper Plate	1	SS400
⑫	Stopper	4	Urethane(PCU20)
⑬	Hexagon Socket Head Bolt	2	SCM435 M8×30
⑭	Safety Plate	2	S45C
⑮	Lock Block	1	SS400
⑯	Hexagonal Bolt	1	SCM435 M16×150
⑰	Hexagonal Nut	1	SCM435 M16
⑱	Cam Slider	1	FCD600(GGG60)
⑲	Spring Guide	1	S45C
⑳	Gas Spring Guide Plate	1	SS400
㉑	Wear Plate	2	Bronze With Graphite(VSM)
㉒	Hexagon Socket Head Bolt	6	SCM435 M20×50
㉓	Wear Plate	2	Bronze With Graphite(VSM)
㉔	Wear Plate	2	Bronze With Graphite(VSM)
㉕	Wear Plate	2	Bronze With Graphite(VSM)
㉖	Wear Plate	2	Bronze With Graphite(VSM)
㉗	Cam Positive Return Plate	2	S45C
㉘	Hexagon Socket Head Bolt	4	SCM435 M10×30
㉙	Roller Driver	1	S45C
㉚	Dowel Pin with Female Thread	4	SUJ2 $\phi 6-30$
㉛	Roller Bracket	1	SS400
㉜	Roller	1	S45C
㉝	Oiless Bush	1	Bronze with Graphite(SO#50SP2)
㉞	Roller Pin	1	S45C
㉟	E-Ring	1	For $\phi 9$
㊱	Hexagon Socket Head Bolt	2	SCM435 M8×25

■ $\theta = 50^\circ \sim 75^\circ$

No.	Description	Qty	Material and Remark
①	Cam Driver	1	FCD600(GGG60)
②	Cam Holder	1	FCD600(GGG60)
③	Base Plate R	1	S45C
④	Wear Plate	2	Bronze With Graphite(VSM)
⑤	Hexagon Socket Head Bolt	30	SCM435 M8×20
⑥	Key	2	SS400
⑦	Key	4	SS400
⑧	Hexagon Socket Head Bolt	4	SCM435 M6×20
⑨	Hexagon Socket Head Bolt	4	SCM435 M16×45
⑩	Base Plate L	1	S45C
⑪	Stopper Plate	1	SS400
⑫	Stopper	4	Urethane(PCU20)
⑬	Hexagon Socket Head Bolt	2	SCM435 M8×30
⑭	Safety Plate	2	S45C
⑮	Lock Block	1	SS400
⑯	Hexagonal Bolt	1	SCM435 M16×150
⑰	Hexagonal Nut	1	SCM435 M16
⑱	Cam Slider	1	FCD600(GGG60)
⑲	Spring Guide	1	S45C
⑳	Gas Spring Guide Plate	1	SS400
㉑	Wear Plate	2	Bronze With Graphite(VSM)
㉒	Hexagon Socket Head Bolt	6	SCM435 M20×50
㉓	Wear Plate	2	Bronze With Graphite(VSM)
㉔	Wear Plate	2	Bronze With Graphite(VSM)
㉕	Wear Plate	2	Bronze With Graphite(VSM)
㉖	Wear Plate	2	Bronze With Graphite(VSM)
㉗	Cam Positive Return Plate	2	S45C
㉘	Hexagon Socket Head Bolt	2	SCM435 M10×30