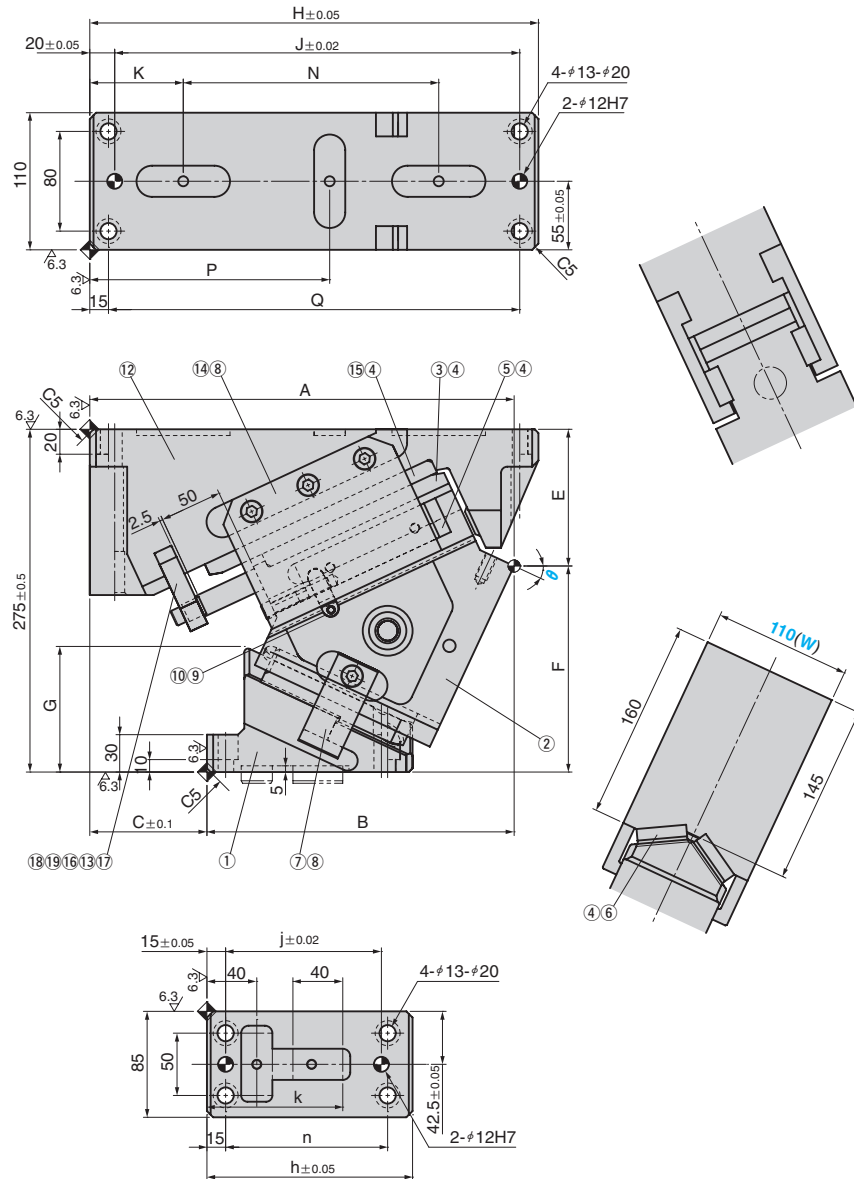


UCMSV110 (00°~45°)



θ	Travel	A	B	C	E	F	G	H	J	K	N	P	Q
00	32.1	318	180	138	70	205	55						
05	35.5	324.46	194.46	130	79.26	195.74	59.6	330	295	70	185	137.5	300
10	38.9	330.22	209.22	121	84.13	190.87	70.2						
15	42.4	336.2	222.2	114	94.45	180.55	76.8						
20	46.1	339.32	234.32	105	100.42	174.58	89.4						
25	50.0	340.51	246.51	94	109.67	165.33	100.8	360	325				
30	54.3	348.36	278.36	70	120.54	154.46	124.5			75	205	192.5	330
35	59.0	343.52	289.52	54	127.82	147.18	125						
40	64.3	332.59	268.59	64	139.41	135.59	130						
45	70.4	322.52	277.52	45	149.44	125.56	140						

j	k	n	h	Working Force kN	Catalog No.	(W)	θ	Spring Type PS
							00	
							05	
							10	
							15	GS
				150	UCMSV	110	20	GK
							25	GD
							30	*NGP
							35	
							40	
							45	

Mark * Without gas spring but accessories for installation of each type are included.

Order **Catalog No.** (W) - θ - PS
UCMSV 110 - 25 - GK

Spring Specification (Qty 1)

Spring Type PS	θ	Spring Force N			Gas Spring Catalog No.
		F _A	F _E	F _{AP}	
GS	00~45	3200	6210	5589	SFC.320.63 (SANKYO)
GK	00~45	3200	5300	4868	X320-063-TD (KALLER)
GD	00~45	3200	4940	4581	U.0325.063 (DADCO)

NOTE

F_A :Initial Force
 F_E :Final Force
 F_{AP} :Force at working point



Option

Code	Specification
K	with key
NF	without nitrogen gas

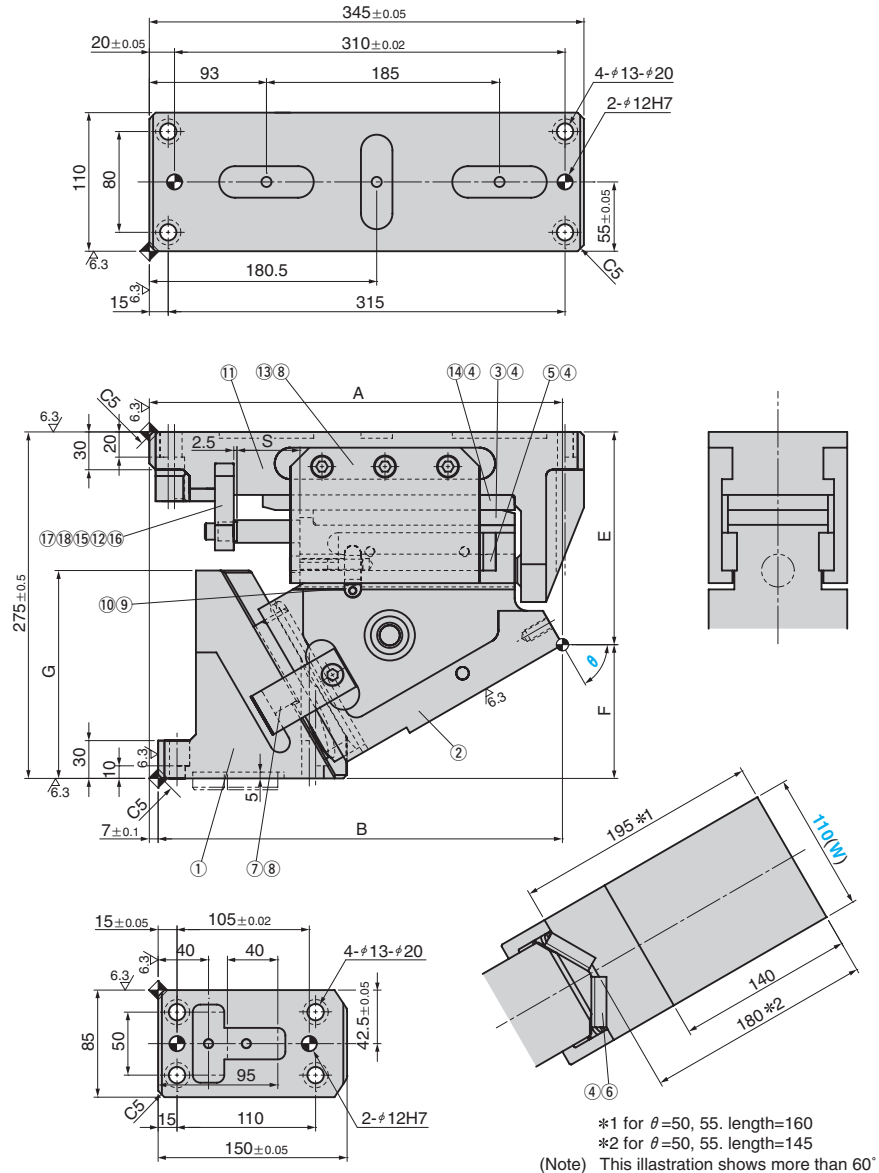


• Parts list is shown in p.1513
 • Detail of key is shown in p.1512
 • Cam diagram is shown in p.1511
 • NF : Gas Springs are not filled with nitrogen gas if delivery is by air freight.



Order **UCMSV110 - 25 - GK - NF**

UCMSV110 (50°~75°)



θ	Travel	A	B	C	E	F	G	S
50	77.8	309.47	284.47	25	156.17	118.83	150	
55	87.2	311.07	293.07	18	169.79	105.21	155	50
60	100	327.93	320.93	7	168.85	106.15		
65	94.6	317.17	327.17	-10	185	90	165	40
70	81.9	313.12	333.12	-20	205	70		
75	108.2	306.76	336.76	-30	225	50		28

Working Force kN	Catalog No.	(W)	θ	Spring Type PS
150	UCMSV	110	50	
			55	GS
			60	GK
			65	GD
			70	*NGP
			75	

Mark * Without gas spring but accessories for installation of each type are included.

Order **Catalog No.** **(W)** - **θ** - **PS**
UCMSV 110 - 60 - GK

Spring Specification (Qty 1)

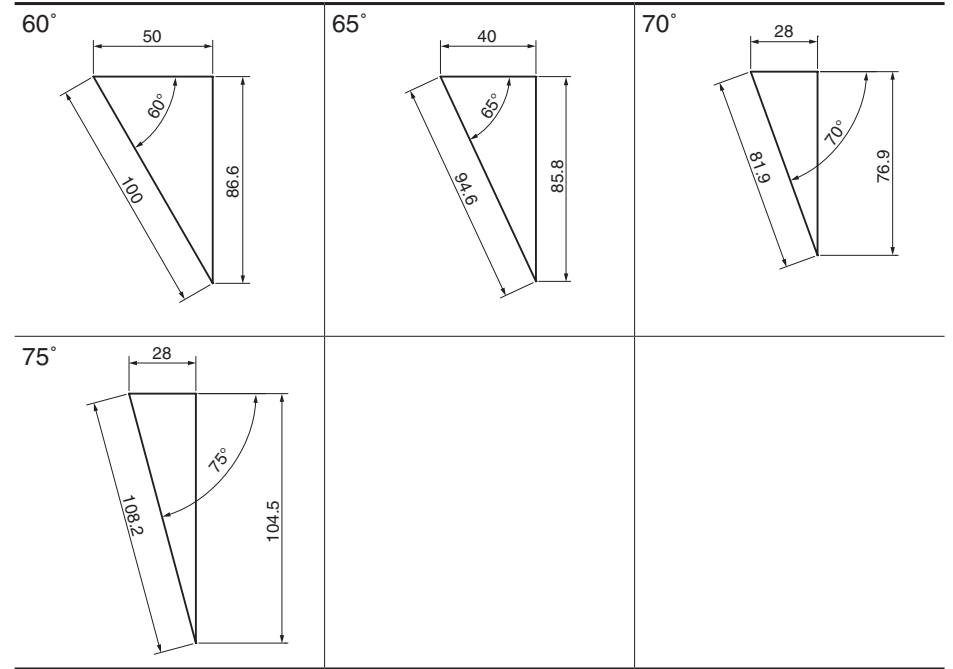
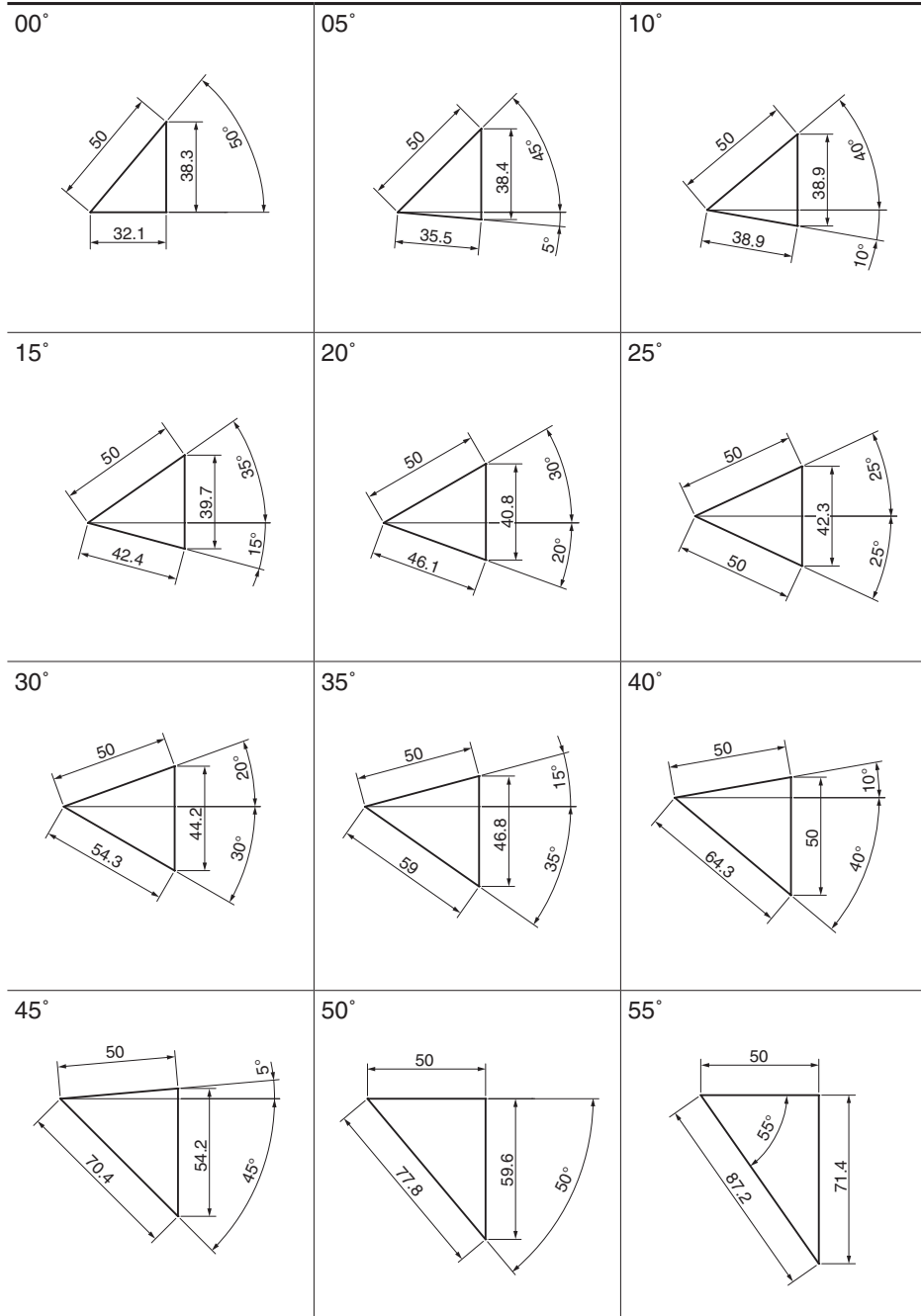
Spring Type PS	θ	Spring Force N			Gas Spring Catalog No.
		F _A	F _E	F _{AP}	
GS	50~60	3200	6210	5589	SFC.320.63 (SANKYO)
	65			5608	SFC.320.50 (SANKYO)
	70~75			5418	SFC.320.38 (SANKYO)
GK	50~60	3200	5300	4868	X320-063-TD (KALLER)
	65			4880	X320-050-TD (KALLER)
	70~75			4747	X320-038-TD (KALLER)
GD	50~60	3200	4940	4581	U.0325.063 (DADCO)
	65			4592	U.0325.050 (DADCO)
	70~75			4482	U.0325.038 (DADCO)

NOTE
 F_A :Initial Force
 F_E :Final Force
 F_{AP} :Force at working point

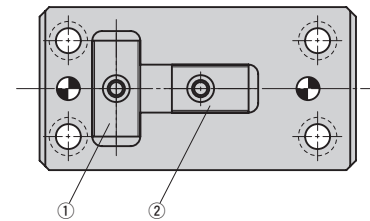
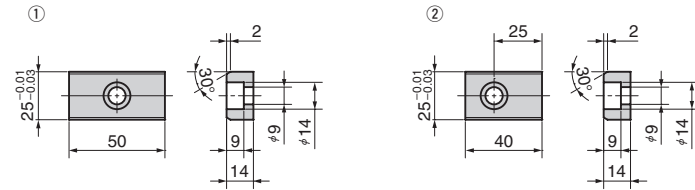
Option	Code	Specification
	K	with key
	NF	without nitrogen gas

Order **UCMSV110 - 60 - GK - NF**

- Parts list is shown in p.1513
- Detail of key is shown in p.1512
- Cam diagram is shown in p.1511
- NF : Gas Springs are not filled with nitrogen gas if delivery is by air freight.



■ Key Specification



■ $\theta = 00^\circ \sim 60^\circ$

No.	Description	Qty	Material and Remark
①	Cam Driver	1	GGG60
②	Cam Slider	1	GGG60
③	Slide Plate(VSM-34)	1	Bronze with Graphite
④	Hexagon Socket Head Bolt	17	SCM435 M8×15
⑤	Oilless Plate C	2	SCM435
⑥	Slide Plate(VSM-18)	2	Bronze with Graphite
⑦	Positive Return Plate	2	S45C
⑧	Hexagon Socket Head Bolt	8	SCM435 M10×25
⑨	Spring Stopper Plate	2	S45C
⑩	Hexagon Socket Head Bolt	2	SCM435 M8×60
⑪	Cam Holder	1	GGG60
⑫	Hexagon Socket Head Bolt	2	SCM435 M10×20
⑬	Slide Keeper	2	Bronze with Graphite
⑭	Slide Plate(VSM-65)	1	SCM435
⑮	Stopper	2	Urethane
⑯	Stopper Plate	1	S45C
⑰	Look Block	1	SS400
⑱	Hexagon Socket Head Bolt	1	SCM435 M8×80
⑲	Gas Spring	1	
⑳	Key	4	SS400
㉑	Key	1	SS400

■ $\theta = 65^\circ$

No.	Description	Qty	Material and Remark
①	Cam Driver	1	GGG60
②	Cam Slider	1	GGG60
③	Slide Plate(VSM-34)	1	Bronze with Graphite
④	Hexagon Socket Head Bolt	17	SCM435 M8×15
⑤	Oilless Plate C	2	SCM435
⑥	Slide Plate(VSM-18)	2	Bronze with Graphite
⑦	Positive Return Plate	2	S45C
⑧	Hexagon Socket Head Bolt	8	SCM435 M10×25
⑨	Spring Stopper Plate	2	S45C
⑩	Hexagon Socket Head Bolt	2	SCM435 M8×60
⑪	Cam Holder	1	GGG60
⑫	Hexagon Socket Head Bolt	2	SCM435 M10×20
⑬	Slide Keeper	2	Bronze with Graphite
⑭	Slide Plate(VSM-65)	1	SCM435
⑮	Stopper	2	Urethane
⑯	Stopper Plate	1	S45C
⑰	Lock Block	1	SS400
⑱	Hexagon Socket Head Bolt	1	SCM435 M8×75
⑲	Gas Spring	1	
⑳	Key	4	SS400
㉑	Key	1	SS400

■ $\theta = 70^\circ \sim 75^\circ$

No.	Description	Qty	Material and Remark
①	Cam Driver	1	GGG60
②	Cam Slider	1	GGG60
③	Slide Plate(VSM-34)	1	Bronze with Graphite
④	Hexagon Socket Head Bolt	17	SCM435 M8×15
⑤	Oilless Plate C	2	SCM435
⑥	Slide Plate(VSM-18)	2	Bronze with Graphite
⑦	Positive Return Plate	2	S45C
⑧	Hexagon Socket Head Bolt	8	SCM435 M10×25
⑨	Spring Stopper Plate	2	S45C
⑩	Hexagon Socket Head Bolt	2	SCM435 M8×60
⑪	Cam Holder	1	GGG60
⑫	Hexagon Socket Head Bolt	2	SCM435 M10×20
⑬	Slide Keeper	2	Bronze with Graphite
⑭	Slide Plate(VSM-65)	1	SCM435
⑮	Stopper	2	Urethane
⑯	Stopper Plate	1	S45C
⑰	Look Block	1	SS400
⑱	Hexagon Socket Head Bolt	1	SCM435 M8×60
⑲	Gas Spring	1	
⑳	Key	4	SS400
㉑	Key	1	SS400