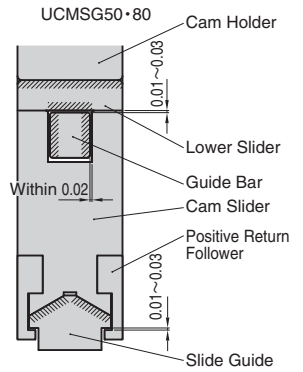
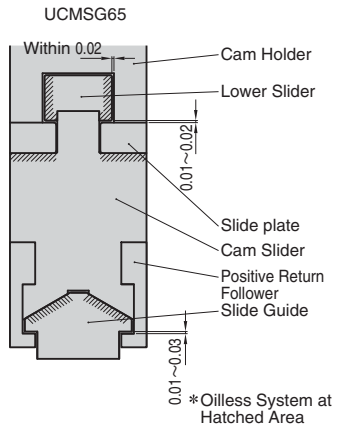


- Highly rigid structure with the overseas automobile manufacturer specification
- 50, 65, 80, 150, 200 and 300 are available for the mount width.
- Available angle is 0° to 65° at increments of 5°.
- ISO springs are used.

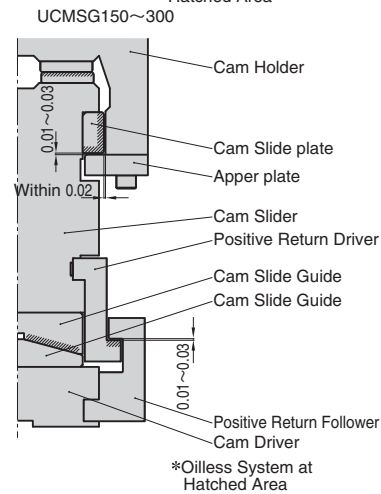
Slide Structure and Positive Return Structure



*Oilless System at Hatched Area



*Oilless System at Hatched Area



*Oilless System at Hatched Area

- Clearance between cam holder and slider is within 0.02 on one side. It enables the cam to take more thrust.
- Clearance between cam slider (positive return follower) and cam driver is 0.01-0.03. This makes smooth movement for slide and positive return.

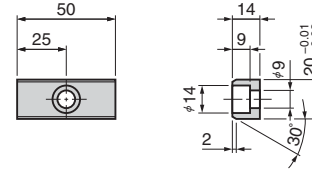
⚠ If a bigger clearance for cam holder or cam slider is needed, please contact your sales department.

Option for UCMSG

● Metric Key Specification(-K)

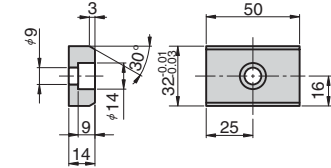
UCMSG50/65

LKU20-50 (with 3-M8 × 15 bolts)



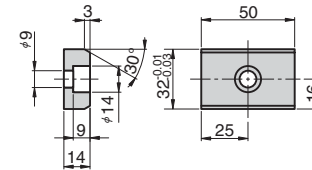
UCMSG80

LKU32-50 (with 3-M8 × 15 bolts)



UCMSG150/200/300

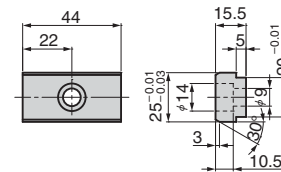
LKU32-50 (with 6-M8 × 15 bolts)



● Metric Key Specification(-KA)

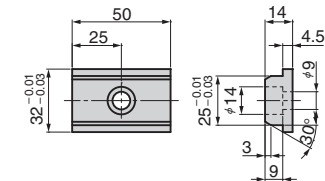
UCMSG50

LKA25-20-44 (with 3-M8 × 15 bolts)



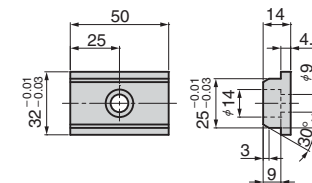
UCMSG80

LKE25-32-50 (with 3-M8 × 15 bolts)

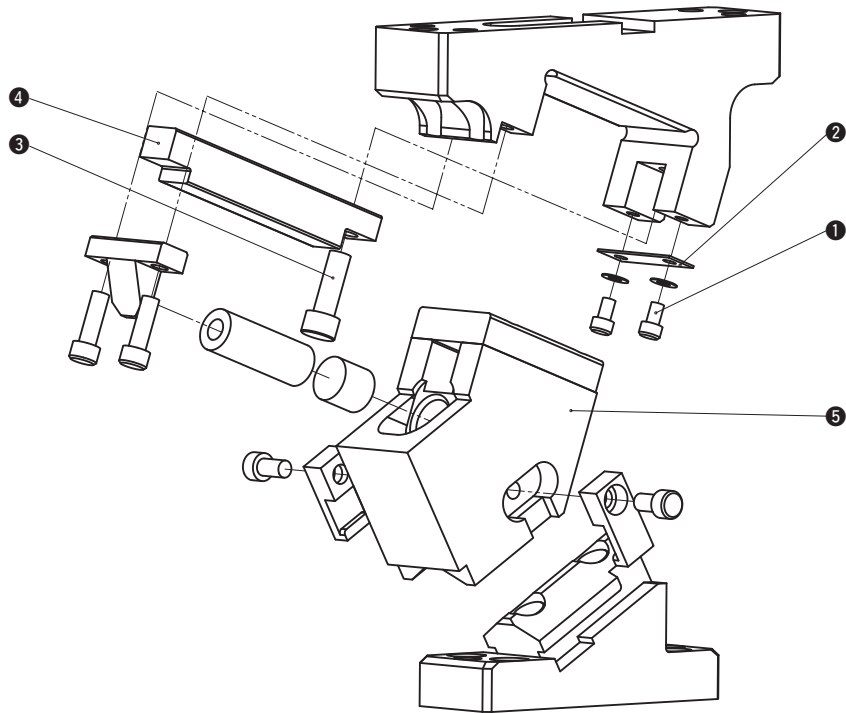


UCMSG150/200/300

LKE25-32-50 (with 6-M8 × 15 bolts)



■ UCMSG50 (UCMSG80) Structure and Assembly / Disassembly



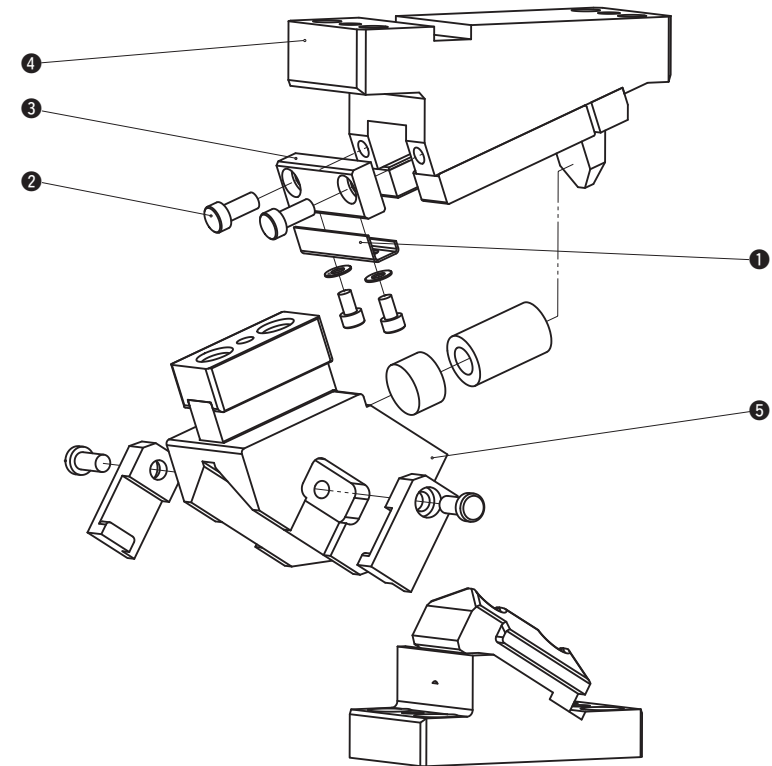
● Disassembly method of UCMSG50 (same for UCMSG80)

- 1) Remove hexagon socket head bolt (1) and remove safety plate (2).
- 2) Remove hexagon socket head bolt (3).
- 3) Shift guide bar (4) to the back then remove cam slider (5) from cam holder.

● Assembly method of UCMSG50 (same for UCMSG80)

- 1) Assemble components in the reverse order of disassembly.
 - Make sure that there is no foreign matter on the sliding area and assemble components.
 - The clearance between the guide bar/cam slider and the cam holder is controlled. Match the stamped serial number on the holder and slider before assembly.
 - When cam is disassembled and then reassembled, please do not forget to assemble all bolts provided

■ UCMSG65 Structure and Assembly / Disassembly



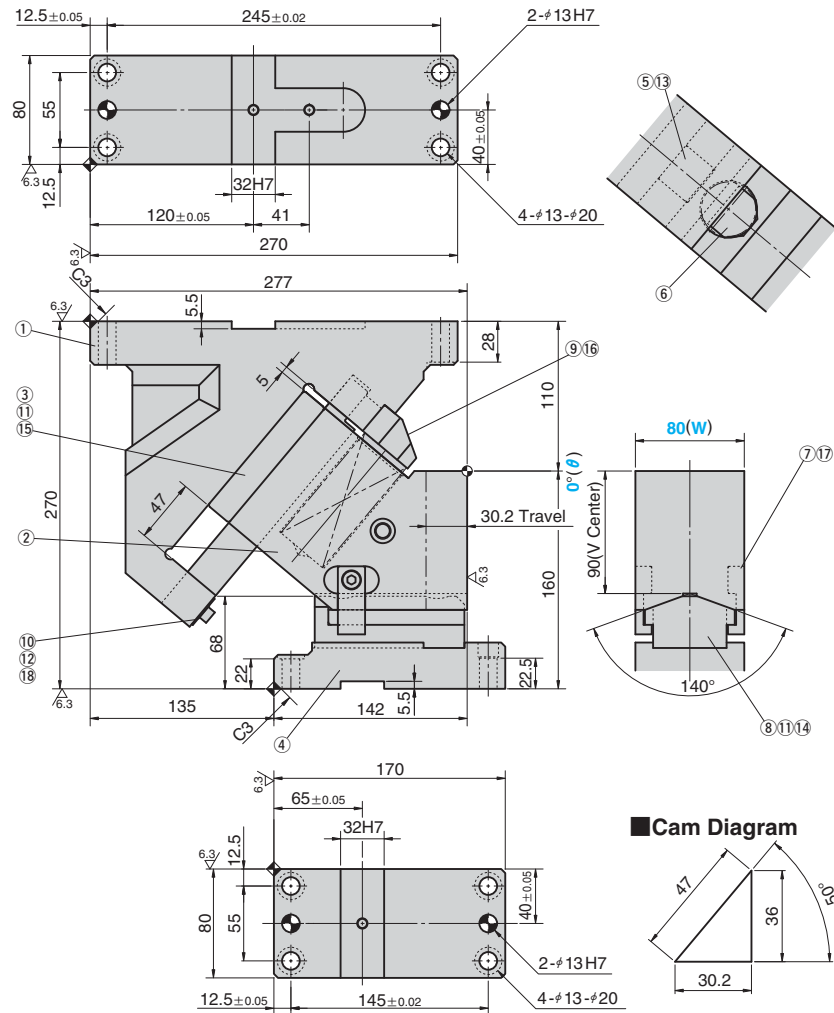
● Disassembly method of UCMSG65

- 1) Remove safety plate (1).
- 2) Loosen hexagon socket head bolt (2). Remove stopper plate (3).
- 3) Pull cam slider (4) from cam holder (5) to the rear.

● Assembly method of UCMSG65

- 1) Assemble components in the reverse order of disassembly.
 - Make sure that there is no foreign matter on the sliding area and assemble components.
 - The clearance between the guide bar/cam slider and the cam holder is controlled. Match the stamped serial number on the holder and slider before assembly.
 - When cam is disassembled and then reassembled, please do not forget to assemble all bolts provided

UCMSG80 - 00



Travel S	Working Force kN(tonf)		Spring Force N(kgf)		Total Weight kg	Catalog No.	(W)	(θ)
	Standard Working Force (one million strokes)	Allowable Working Force (300,000 strokes)	Initial Load	Final Load				
30.2	49.0 (5.0)	98.0 (10.0)	296.1 (30.2)	1842.4 (187.6)	34.0	UCMSG	80	00



Order

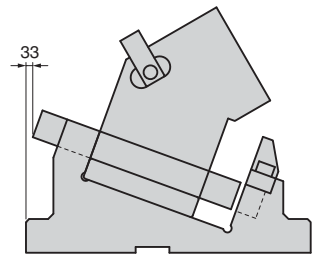
Catalog No. (W) - (θ)
UCMSG 80 - 00



Option

Option Code	Specification
K	A metric key is attached. (It is not assembled to the main unit.)
KA	Metric dedicated key is attached for both cam holder and driver. (It is not assembled to the main unit.)
N12	Dowel pin holes of cam holder and cam driver are changed to φ12.

Space for removing



Order

UCMSG80 - 00 - K

For machining details or tapping hole and dowel hole (prepared hole and finished hole) for mounting of the retainer, refer to page 551. For detailed specification of the key, refer to page 1100.

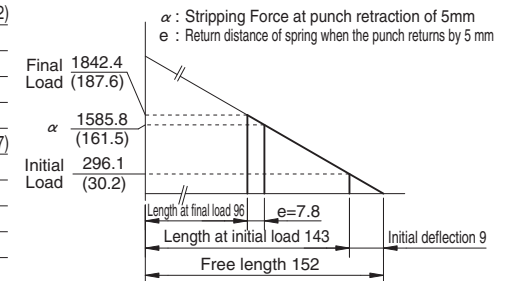
Table of Components

No.	Description	Qty	Material and Remark
①	Cam Holder	1	FCD450
②	Cam Slider	1	S45C(1045)
③	Lower Slider	1	Bronze with Graphite(SO#50SP2)
④	Cam Driver	1	FC250
⑤	Guide Bar	1	SCM440 with Graphite
⑥	Coil Spring	1	TJL40-152
⑦	Positive Return Follower	2	S45C(1045)
⑧	Slide Guide	1	Bronze with Graphite(SO#50SP7)
⑨	Spring Block	1	SS400(1020)
⑩	Safety Plate	1	SS400(1020)
⑪	Dowel Pin with Female Thread	4	SUJ2 φ8×30
⑫	Coned Disc Spring	2	M6
⑬	Hexagon Socket Head Bolt	1	SCM435 M12×35
⑭	Hexagon Socket Head Bolt	2	SCM435 M12×40
⑮	Hexagon Socket Head Bolt	4	SCM435 M10×25
⑯	Hexagon Socket Head Bolt	2	SCM435 M10×30
⑰	Hexagon Socket Brazier Head Bolt	2	SCM435 LCS8-18
⑱	Hexagon Socket Head Bolt	2	SCM435 M6×10

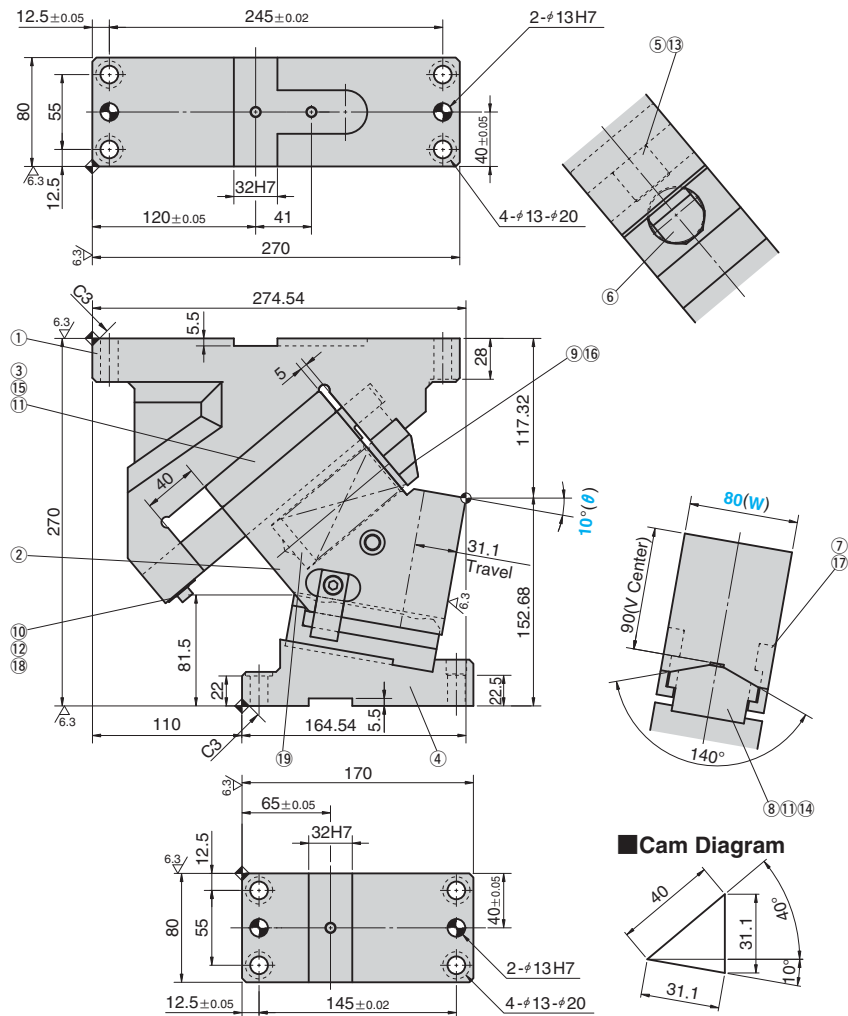
Spring Diagram

(Stripping Force at punch retraction of 5mm)

- Spring used TJL40-152 (1 piece)
- Spring constant 32.9N/mm (3.35kgf/mm)



UCMSG80 - 10



Travel S	Working Force kN(tonf)		Spring Force N(kgf)		Total Weight kg	Catalog No.	(W)	(θ)
	Standard Working Force (one million strokes)	Allowable Working Force (300,000 strokes)	Initial Load	Final Load				
31.1	49.0 (5.0)	98.0 (10.0)	432.0 (44.0)	1872.0 (190.8)	32.0	UCMSG	80	10



Order

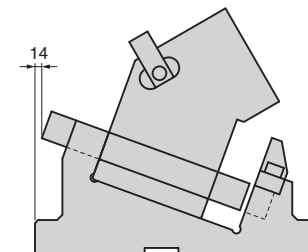
Catalog No. **UCMSG** (W) **80** - (θ) **10**



Option

Option Code	Specification
K	A metric key is attached. (It is not assembled to the main unit.)
KA	Metric dedicated key is attached for both cam holder and driver. (It is not assembled to the main unit.)
N12	Dowel pin holes of cam holder and cam driver are changed to φ12.

Space for removing



Order

UCMSG80 - 10 - K



For machining details or tapping hole and dowel hole (prepared hole and finished hole) for mounting of the retainer, refer to page 551. For detailed specification of the key, refer to page 1100.

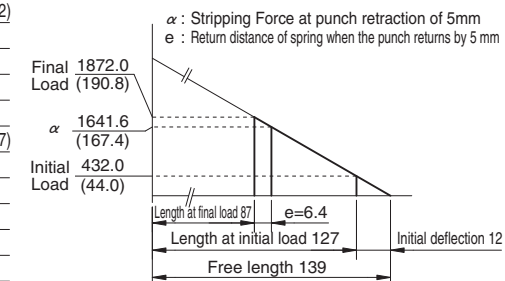
Table of Components

No.	Description	Qty	Material and Remark
①	Cam Holder	1	FCD450
②	Cam Slider	1	S45C(1045)
③	Lower Slider	1	Bronze with Graphite(SO#50SP2)
④	Cam Driver	1	FC250
⑤	Guide Bar	1	SCM440 with Graphite
⑥	Coil Spring	1	TJL40-139
⑦	Positive Return Follower	2	S45C(1045)
⑧	Slide Guide	1	Bronze with Graphite(SO#50SP7)
⑨	Spring Block	1	SS400(1020)
⑩	Safety Plate	1	SS400(1020)
⑪	Dowel Pin with Female Thread	4	SUJ2 φ8×30
⑫	Coned Disc Spring	2	M6
⑬	Hexagon Socket Head Bolt	1	SCM435 M12×35
⑭	Hexagon Socket Head Bolt	2	SCM435 M12×40
⑮	Hexagon Socket Head Bolt	4	SCM435 M10×25
⑯	Hexagon Socket Head Bolt	2	SCM435 M10×30
⑰	Hexagon Socket Brazier Head Bolt	2	SCM435 LCS8-18
⑱	Hexagon Socket Head Bolt	2	SCM435 M6×10
⑲	Spacer	1	SS400(1020)

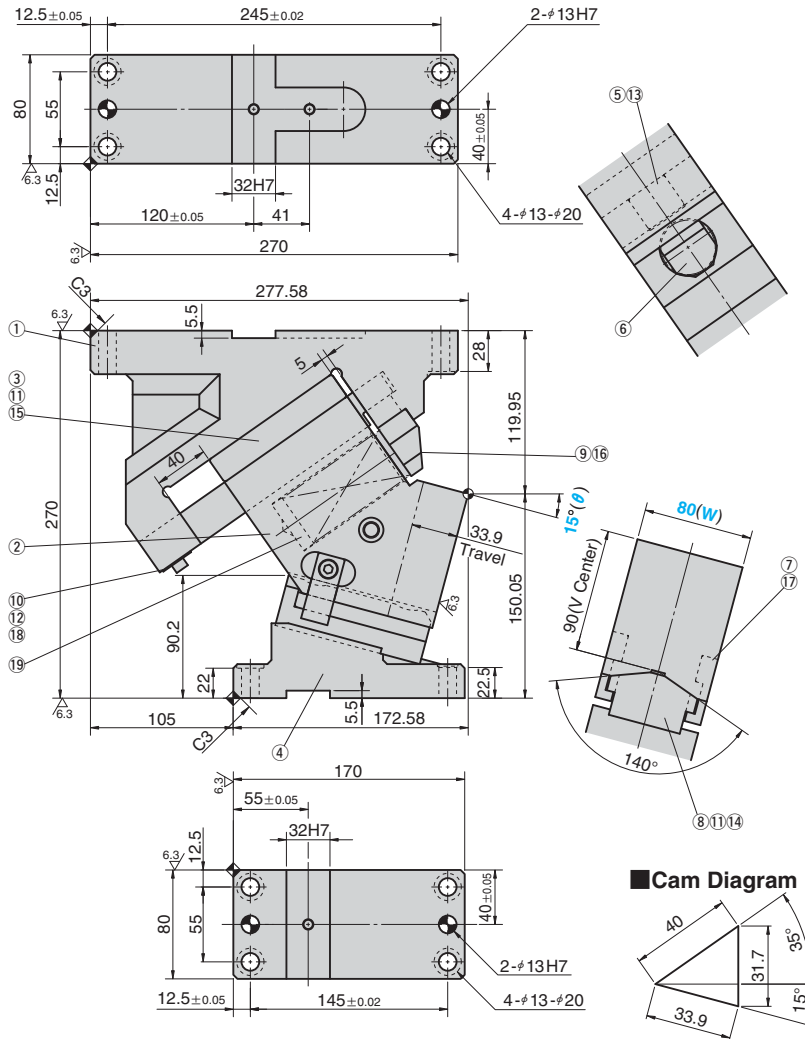
Spring Diagram

(Stripping Force at punch retraction of 5mm)

- Spring used TJL40-139 (1 piece)
- Spring constant 36.0N/mm (3.67kgf/mm)



UCMSG80 - 15



Cam Diagram

Travel S	Working Force kN(tonf)		Spring Force N(kgf)		Total Weight kg	Catalog No.	(W)	(θ)
	Standard Working Force (one million strokes)	Allowable Working Force (300,000 strokes)	Initial Load	Final Load				
33.9	49.0 (5.0)	98.0 (10.0)	432.0 (44.0)	1872.0 (190.8)	32.0	UCMSG	80	15



Order

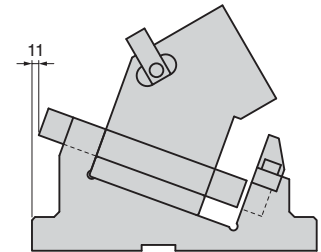
Catalog No. **UCMSG** (W) **80** - (θ) **15**



Option

Option Code	Specification
K	A metric key is attached. (It is not assembled to the main unit.)
KA	Metric dedicated key is attached for both cam holder and driver. (It is not assembled to the main unit.)
N12	Dowel pin holes of cam holder and cam driver are changed to φ12.

Space for removing



Order

UCMSG80 - 15 - K



For machining details or tapping hole and dowel hole (prepared hole and finished hole) for mounting of the retainer, refer to page 551. For detailed specification of the key, refer to page 1100.

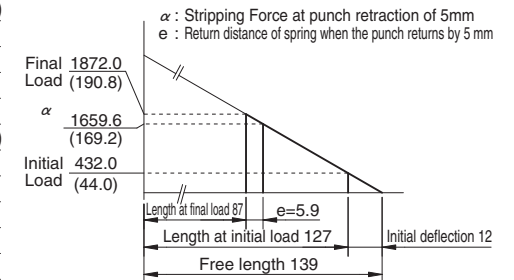
Table of Components

No.	Description	Qty	Material and Remark
①	Cam Holder	1	FCD450
②	Cam Slider	1	S45C(1045)
③	Lower Slider	1	Bronze with Graphite(SO#50SP2)
④	Cam Driver	1	FC250
⑤	Guide Bar	1	SCM440 with Graphite
⑥	Coil Spring	1	TJL40-139
⑦	Positive Return Follower	2	S45C(1045)
⑧	Slide Guide	1	Bronze with Graphite(SO#50SP7)
⑨	Spring Block	1	SS400(1020)
⑩	Safety Plate	1	SS400(1020)
⑪	Dowel Pin with Female Thread	4	SUJ2 φ8×30
⑫	Coned Disc Spring	2	M6
⑬	Hexagon Socket Head Bolt	1	SCM435 M12×35
⑭	Hexagon Socket Head Bolt	2	SCM435 M12×40
⑮	Hexagon Socket Head Bolt	4	SCM435 M10×25
⑯	Hexagon Socket Head Bolt	2	SCM435 M10×30
⑰	Hexagon Socket Brazier Head Bolt	2	SCM435 LCS8-18
⑱	Hexagon Socket Head Bolt	2	SCM435 M6×10
⑲	Spacer	1	SS400(1020)

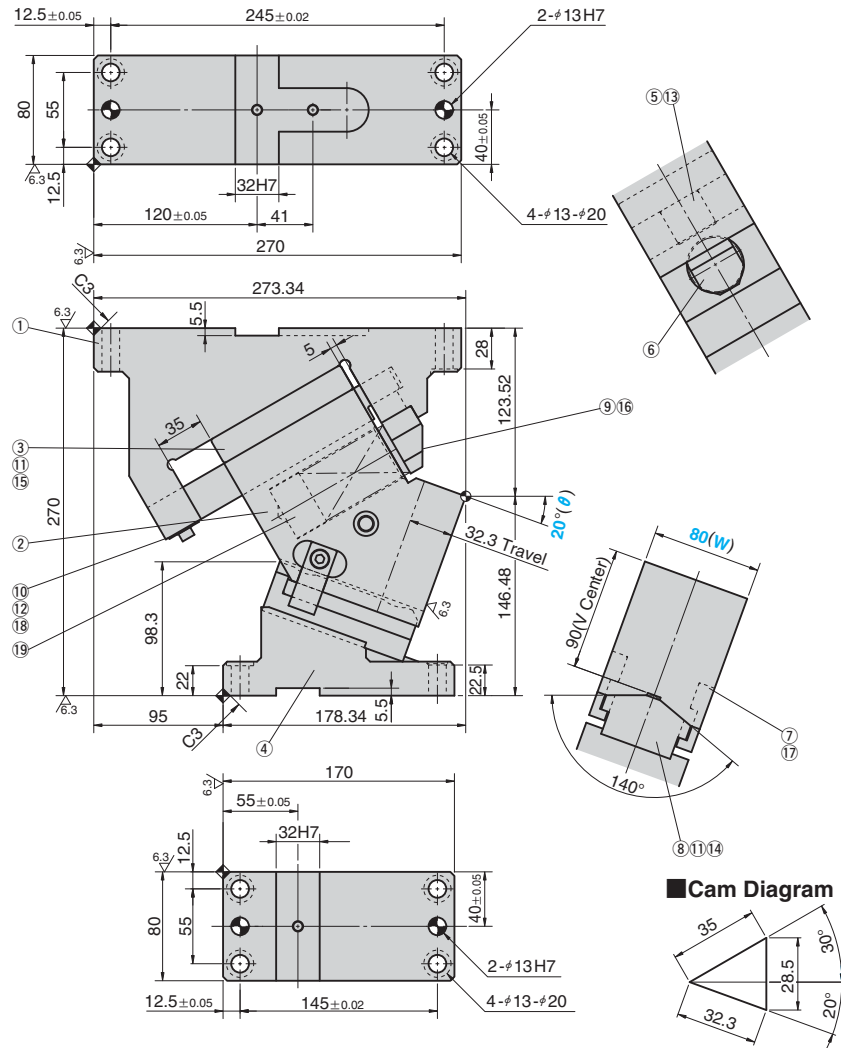
Spring Diagram

(Stripping Force at punch retraction of 5mm)

- Spring used TJL40-139 (1 piece)
- Spring constant 36.0N/mm (3.67kgf/mm)



UCMSG80 - 20



Travel S	Working Force kN(tonf)		Spring Force N(kgf)		Total Weight kg	Catalog No.	(W)	(θ)
	Standard Working Force (one million strokes)	Allowable Working Force (300,000 strokes)	Initial Load	Final Load				
32.3	49.0 (5.0)	98.0 (10.0)	391.5 (39.9)	1914.0 (194.9)	32.0	UCMSG	80	20



Order

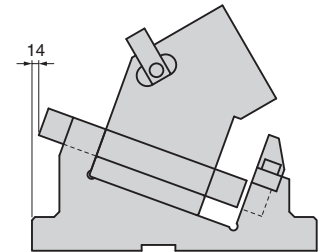
Catalog No. (W) - (θ)
UCMSG 80 - 20



Option

Option Code	Specification
K	A metric key is attached. (It is not assembled to the main unit.)
KA	Metric dedicated key is attached for both cam holder and driver. (It is not assembled to the main unit.)
N12	Dowel pin holes of cam holder and cam driver are changed to φ12.

Space for removing



Order

UCMSG80 - 20 - K



For machining details or tapping hole and dowel hole (prepared hole and finished hole) for mounting of the retainer, refer to page 551. For detailed specification of the key, refer to page 1100.

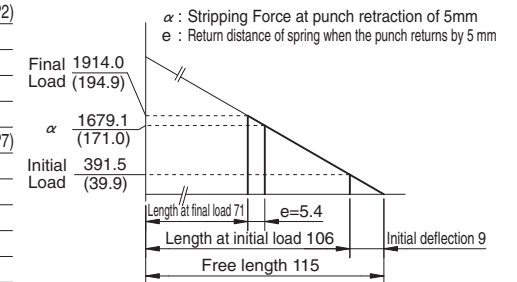
Table of Components

No.	Description	Qty	Material and Remark
①	Cam Holder	1	FCD450
②	Cam Slider	1	S45C(1045)
③	Lower Slider	1	Bronze with Graphite(SO#50SP2)
④	Cam Driver	1	FC250
⑤	Guide Bar	1	SCM440 with Graphite
⑥	Coil Spring	1	TJL40-115
⑦	Positive Return Follower	2	S45C(1045)
⑧	Slide Guide	1	Bronze with Graphite(SO#50SP7)
⑨	Spring Block	1	SS400(1020)
⑩	Safety Plate	1	SS400(1020)
⑪	Dowel Pin with Female Thread	4	SUJ2 φ8×30
⑫	Coned Disc Spring	2	M6
⑬	Hexagon Socket Head Bolt	1	SCM435 M12×35
⑭	Hexagon Socket Head Bolt	2	SCM435 M12×40
⑮	Hexagon Socket Head Bolt	4	SCM435 M10×25
⑯	Hexagon Socket Head Bolt	2	SCM435 M10×30
⑰	Hexagon Socket Brazier Head Bolt	2	SCM435 LCS8-18
⑱	Hexagon Socket Head Bolt	2	SCM435 M6×10
⑲	Spacer	1	SS400(1020)

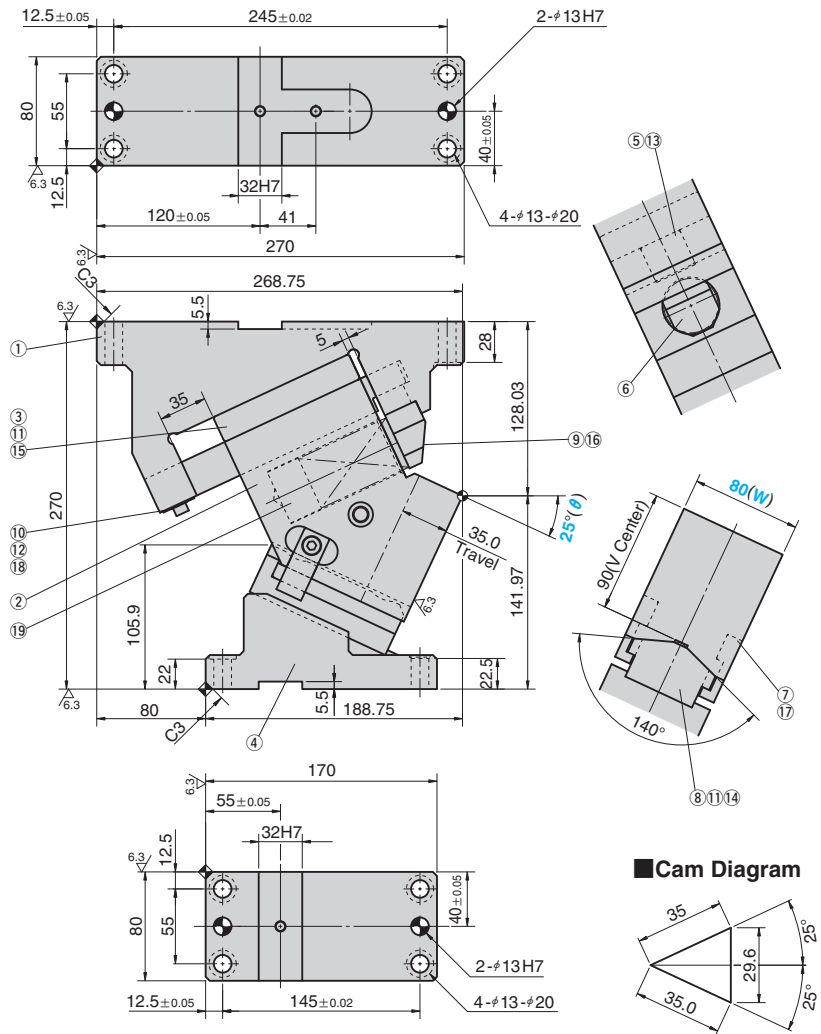
Spring Diagram

(Stripping Force at punch retraction of 5mm)

- Spring used TJL40-115 (1 piece)
- Spring constant 43.5N/mm (4.43kgf/mm)



UCMSG80 - 25



Cam Diagram

Travel S	Working Force kN(tonf)		Spring Force N(kgf)		Total Weight kg	Catalog No.	(W)	(θ)
	Standard Working Force (one million strokes)	Allowable Working Force (300,000 strokes)	Initial Load	Final Load				
35.0	49.0 (5.0)	98.0 (10.0)	391.5 (39.9)	1914.0 (194.9)	30.0	UCMSG	80	25



Order

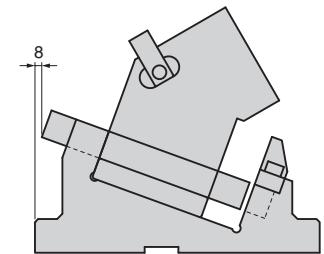
Catalog No. (W) - (θ)
UCMSG 80 - 25



Option

Option Code	Specification
K	A metric key is attached. (It is not assembled to the main unit.)
KA	Metric dedicated key is attached for both cam holder and driver. (It is not assembled to the main unit.)
N12	Dowel pin holes of cam holder and cam driver are changed to φ12.

Space for removing



Order

UCMSG80 - 25 - K

For machining details or tapping hole and dowel hole (prepared hole and finished hole) for mounting of the retainer, refer to page 551. For detailed specification of the key, refer to page 1100.

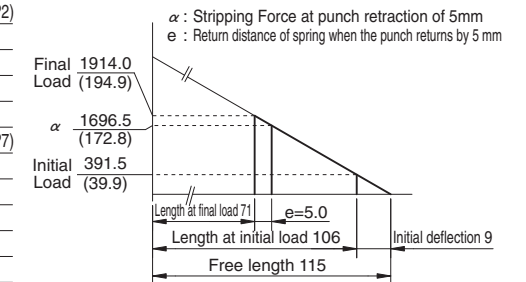
Table of Components

No.	Description	Qty	Material and Remark
①	Cam Holder	1	FCD450
②	Cam Slider	1	S45C(1045)
③	Lower Slider	1	Bronze with Graphite(SO#50SP2)
④	Cam Driver	1	FC250
⑤	Guide Bar	1	SCM440 with Graphite
⑥	Coil Spring	1	TJL40-115
⑦	Positive Return Follower	2	S45C(1045)
⑧	Slide Guide	1	Bronze with Graphite(SO#50SP7)
⑨	Spring Block	1	SS400(1020)
⑩	Safety Plate	1	SS400(1020)
⑪	Dowel Pin with Female Thread	4	SUJ2 φ8×30
⑫	Coned Disc Spring	2	M6
⑬	Hexagon Socket Head Bolt	1	SCM435 M12×35
⑭	Hexagon Socket Head Bolt	2	SCM435 M12×40
⑮	Hexagon Socket Head Bolt	4	SCM435 M10×25
⑯	Hexagon Socket Head Bolt	2	SCM435 M10×30
⑰	Hexagon Socket Brazier Head Bolt	2	SCM435 LCS8-18
⑱	Hexagon Socket Head Bolt	2	SCM435 M6×10
⑲	Spacer	1	SS400(1020)

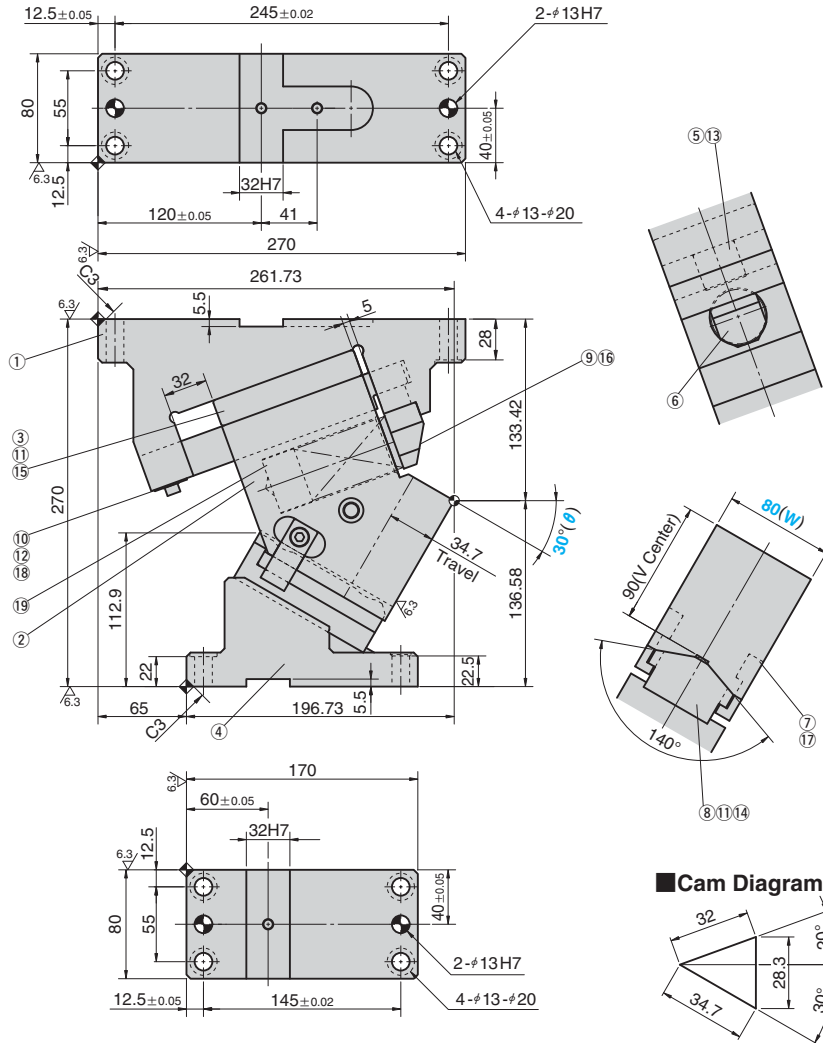
Spring Diagram

(Stripping Force at punch retraction of 5mm)

- Spring used TJL40-115 (1 piece)
- Spring constant 43.5N/mm (4.43kgf/mm)



UCMSG80 - 30



Cam Diagram

Travel S	Working Force kN(tonf)		Spring Force N(kgf)		Total Weight kg	Catalog No.	(W)	(θ)
	Standard Working Force (one million strokes)	Allowable Working Force (300,000 strokes)	Initial Load	Final Load				
34.7	49.0 (5.0)	98.0 (10.0)	522.0 (53.2)	1914.0 (194.9)	30.0	UCMSG	80	30



Order

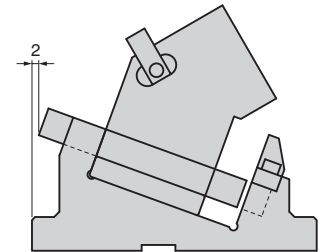
Catalog No. **UCMSG** (W) **80** - (θ) **30**



Option

Option Code	Specification
K	A metric key is attached. (It is not assembled to the main unit.)
KA	Metric dedicated key is attached for both cam holder and driver. (It is not assembled to the main unit.)
N12	Dowel pin holes of cam holder and cam driver are changed to φ12.

Space for removing



Order

UCMSG80 - 30 - K



For machining details or tapping hole and dowel hole (prepared hole and finished hole) for mounting of the retainer, refer to page 551. For detailed specification of the key, refer to page 1100.

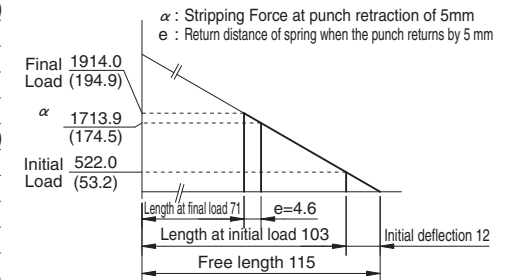
Table of Components

No.	Description	Qty	Material and Remark
①	Cam Holder	1	FCD450
②	Cam Slider	1	S45C(1045)
③	Lower Slider	1	Bronze with Graphite(SO#50SP2)
④	Cam Driver	1	FC250
⑤	Guide Bar	1	SCM440 with Graphite
⑥	Coil Spring	1	TJL40-115
⑦	Positive Return Follower	2	S45C(1045)
⑧	Slide Guide	1	Bronze with Graphite(SO#50SP7)
⑨	Spring Block	1	SS400(1020)
⑩	Safety Plate	1	SS400(1020)
⑪	Dowel Pin with Female Thread	4	SUJ2 φ8×30
⑫	Coned Disc Spring	2	M6
⑬	Hexagon Socket Head Bolt	1	SCM435 M12×35
⑭	Hexagon Socket Head Bolt	2	SCM435 M12×40
⑮	Hexagon Socket Head Bolt	4	SCM435 M10×25
⑯	Hexagon Socket Head Bolt	2	SCM435 M10×30
⑰	Hexagon Socket Brazier Head Bolt	2	SCM435 LCS8-18
⑱	Hexagon Socket Head Bolt	2	SCM435 M6×10
⑲	Spacer	1	SS400(1020)

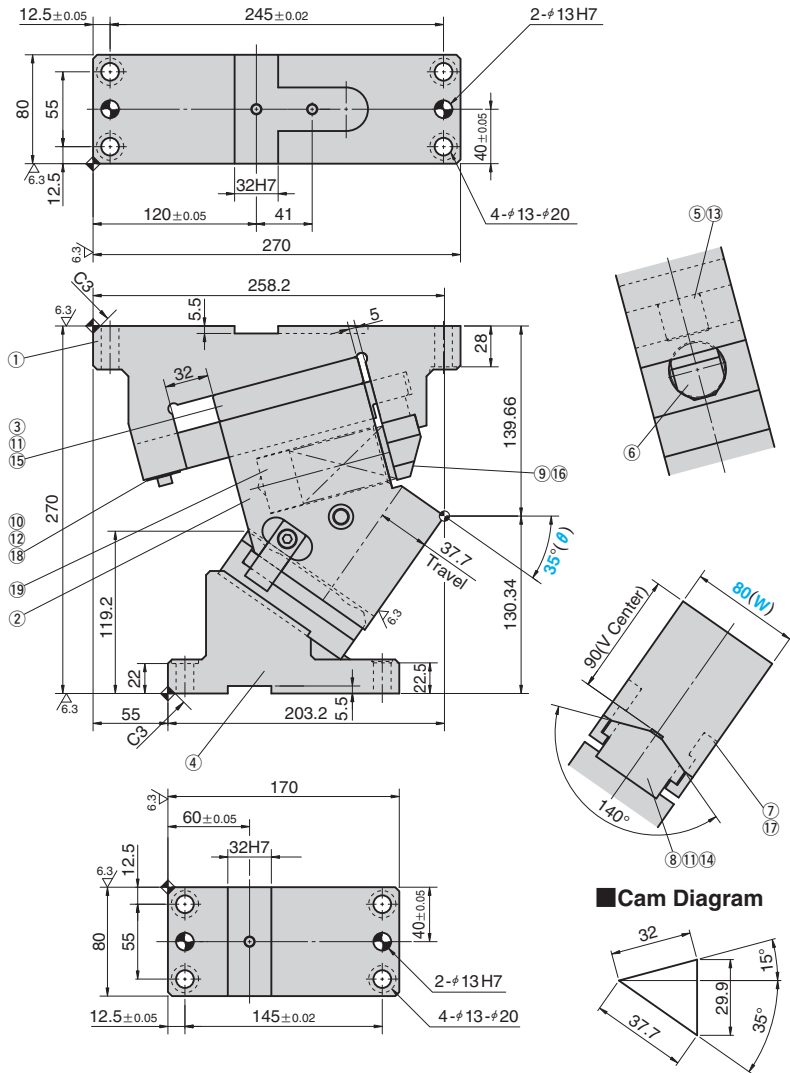
Spring Diagram

(Stripping Force at punch retraction of 5mm)

- Spring used TJL40-115 (1 piece)
- Spring constant 43.5N/mm (4.43kgf/mm)



UCMSG80 - 35



Cam Diagram

Travel S	Working Force kN(tonf)		Spring Force N(kgf)		Total Weight kg	Catalog No.	(W)	(θ)
	Standard Working Force (one million strokes)	Allowable Working Force (300,000 strokes)	Initial Load	Final Load				
37.7	49.0 (5.0)	98.0 (10.0)	522.0 (53.2)	1914.0 (194.9)	30.0	UCMSG	80	35



Order

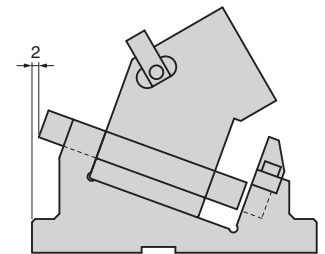
Catalog No. **UCMSG** (W) **80** - (θ) **35**



Option

Option Code	Specification
K	A metric key is attached. (It is not assembled to the main unit.)
KA	Metric dedicated key is attached for both cam holder and driver. (It is not assembled to the main unit.)
N12	Dowel pin holes of cam holder and cam driver are changed to φ12.

Space for removing



Order

UCMSG80 - 35 - K



For machining details or tapping hole and dowel hole (prepared hole and finished hole) for mounting of the retainer, refer to page 551. For detailed specification of the key, refer to page 1100.

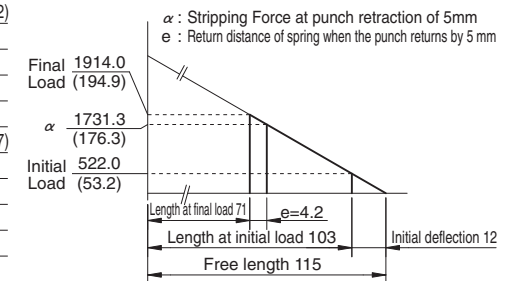
Table of Components

No.	Description	Qty	Material and Remark
①	Cam Holder	1	FCD450
②	Cam Slider	1	S45C(1045)
③	Lower Slider	1	Bronze with Graphite(SO#50SP2)
④	Cam Driver	1	FC250
⑤	Guide Bar	1	SCM440 with Graphite
⑥	Coil Spring	1	TJL40-115
⑦	Positive Return Follower	2	S45C(1045)
⑧	Slide Guide	1	Bronze with Graphite(SO#50SP7)
⑨	Spring Block	1	SS400(1020)
⑩	Safety Plate	1	SS400(1020)
⑪	Dowel Pin with Female Thread	4	SUJ2 φ8×30
⑫	Coned Disc Spring	2	M6
⑬	Hexagon Socket Head Bolt	1	SCM435 M12×35
⑭	Hexagon Socket Head Bolt	2	SCM435 M12×40
⑮	Hexagon Socket Head Bolt	4	SCM435 M10×25
⑯	Hexagon Socket Head Bolt	2	SCM435 M10×30
⑰	Hexagon Socket Brazier Head Bolt	2	SCM435 LCS8-18
⑱	Hexagon Socket Head Bolt	2	SCM435 M6×10
⑲	Spacer	1	SS400(1020)

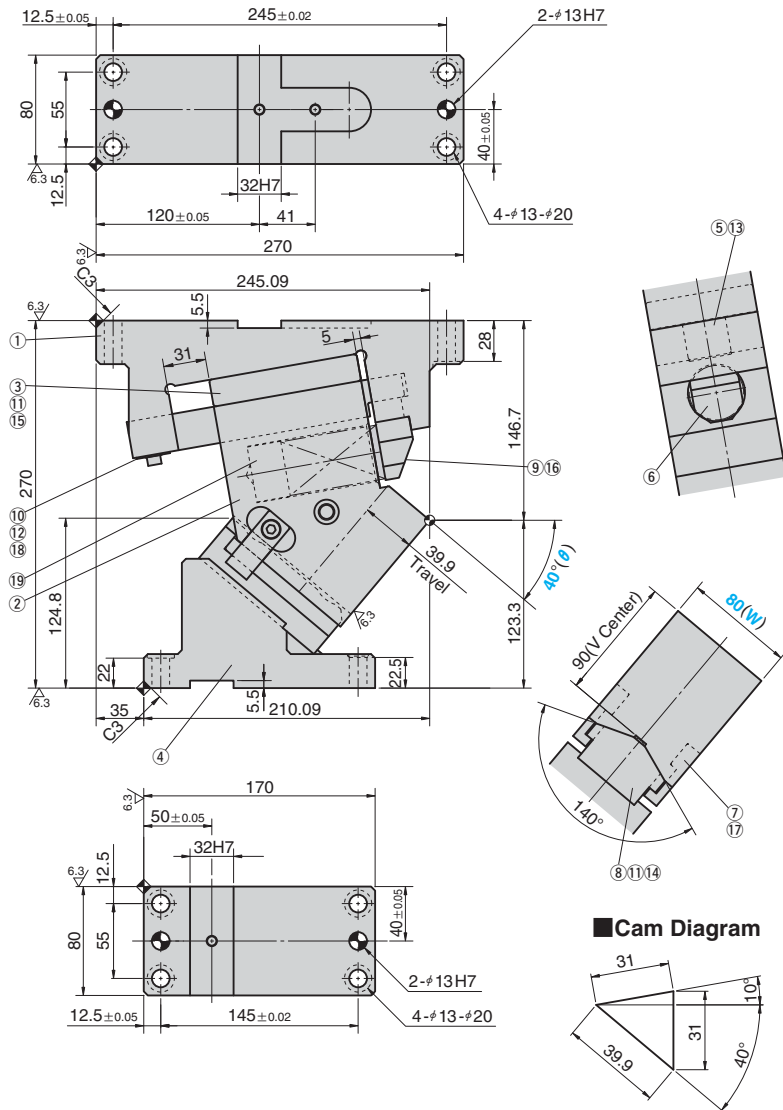
Spring Diagram

(Stripping Force at punch retraction of 5mm)

- Spring used TJL40-115 (1 piece)
- Spring constant 43.5N/mm (4.43kgf/mm)



UCMSG80 - 40



Cam Diagram

Travel S	Working Force kN(tonf)		Spring Force N(kgf)		Total Weight kg	Catalog No.	(W)	(θ)
	Standard Working Force (one million strokes)	Allowable Working Force (300,000 strokes)	Initial Load	Final Load				
39.9	49.0 (5.0)	98.0 (10.0)	565.5 (57.6)	1914.0 (194.9)	29.0	UCMSG	80	40



Order

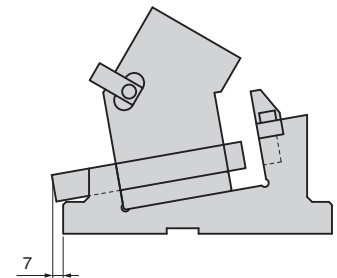
Catalog No. (W) - (θ)
UCMSG 80 - 40



Option

Option Code	Specification
K	A metric key is attached. (It is not assembled to the main unit.)
KA	Metric dedicated key is attached for both cam holder and driver. (It is not assembled to the main unit.)
N12	Dowel pin holes of cam holder and cam driver are changed to φ12.

Space for removing



Order

UCMSG80 - 40 - K



For machining details or tapping hole and dowel hole (prepared hole and finished hole) for mounting of the retainer, refer to page 551. For detailed specification of the key, refer to page 1100.

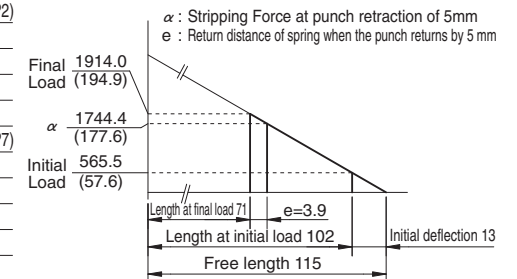
Table of Components

No.	Description	Qty	Material and Remark
①	Cam Holder	1	FCD450
②	Cam Slider	1	S45C(1045)
③	Lower Slider	1	Bronze with Graphite(SO#50SP2)
④	Cam Driver	1	FC250
⑤	Guide Bar	1	SCM440 with Graphite
⑥	Coil Spring	1	TJL40-115
⑦	Positive Return Follower	2	S45C(1045)
⑧	Slide Guide	1	Bronze with Graphite(SO#50SP7)
⑨	Spring Block	1	SS400(1020)
⑩	Safety Plate	1	SS400(1020)
⑪	Dowel Pin with Female Thread	4	SUJ2 φ8×30
⑫	Coned Disc Spring	2	M6
⑬	Hexagon Socket Head Bolt	1	SCM435 M12×35
⑭	Hexagon Socket Head Bolt	2	SCM435 M12×40
⑮	Hexagon Socket Head Bolt	4	SCM435 M10×25
⑯	Hexagon Socket Head Bolt	2	SCM435 M10×30
⑰	Hexagon Socket Brazier Head Bolt	2	SCM435 LCS8-18
⑱	Hexagon Socket Head Bolt	2	SCM435 M6×10
⑲	Spacer	1	SS400(1020)

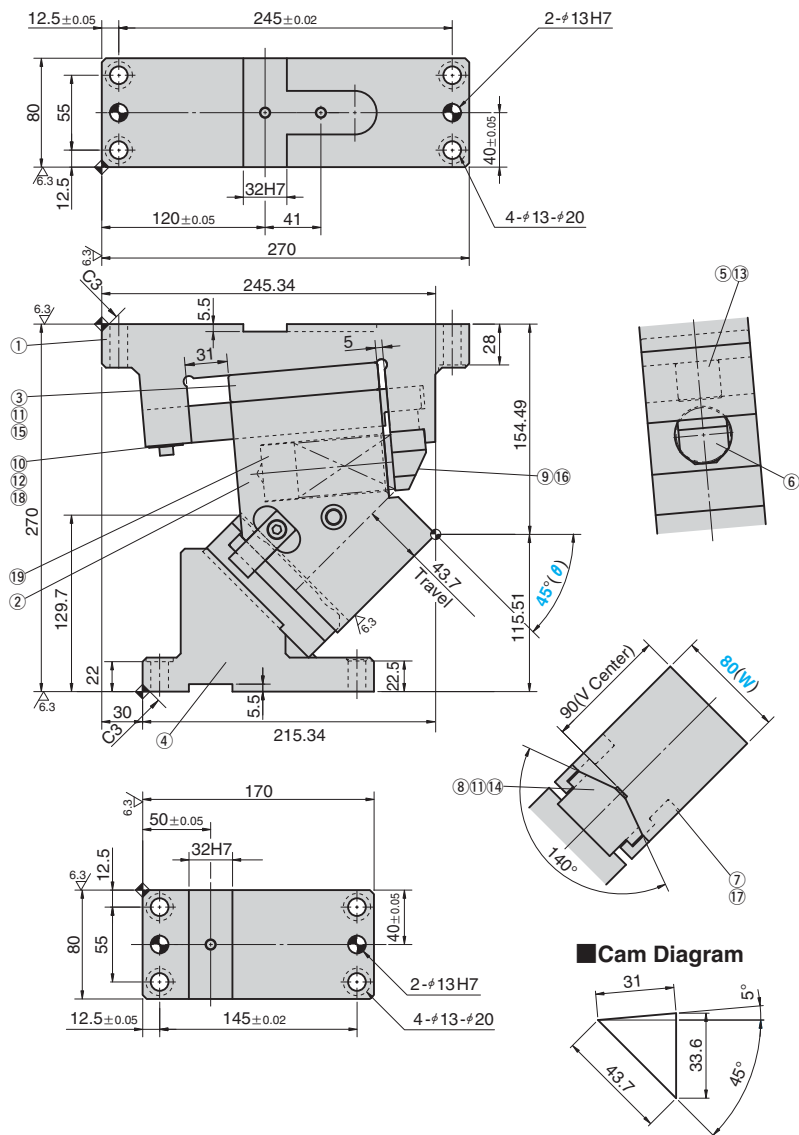
Spring Diagram

(Stripping Force at punch retraction of 5mm)

- Spring used TJL40-115 (1 piece)
- Spring constant 43.5N/mm (4.43kgf/mm)



UCMSG80 - 45



Cam Diagram

Travel S	Working Force kN(tonf)		Spring Force N(kgf)		Total Weight kg	Catalog No.	(W)	(θ)
	Standard Working Force (one million strokes)	Allowable Working Force (300,000 strokes)	Initial Load	Final Load				
43.7	49.0 (5.0)	98.0 (10.0)	565.5 (57.6)	1914.0 (194.9)	29.0	UCMSG	80	45



Order

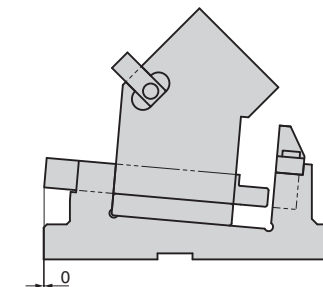
Catalog No. (W) - (θ)
UCMSG 80 - 45



Option

Option Code	Specification
K	A metric key is attached. (It is not assembled to the main unit.)
KA	Metric dedicated key is attached for both cam holder and driver. (It is not assembled to the main unit.)
N12	Dowel pin holes of cam holder and cam driver are changed to φ12.

Space for removing



Order

UCMSG80 - 45 - K

For machining details or tapping hole and dowel hole (prepared hole and finished hole) for mounting of the retainer, refer to page 551. For detailed specification of the key, refer to page 1100.

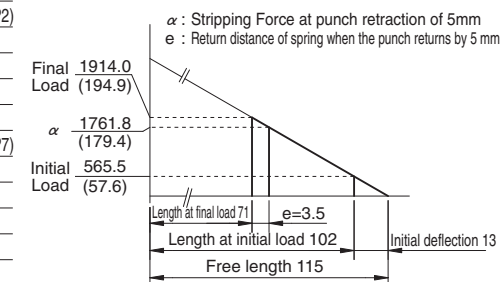
Table of Components

No.	Description	Qty	Material and Remark
①	Cam Holder	1	FCD450
②	Cam Slider	1	S45C(1045)
③	Lower Slider	1	Bronze with Graphite(SO#50SP2)
④	Cam Driver	1	FC250
⑤	Guide Bar	1	SCM440 with Graphite
⑥	Coil Spring	1	TJL40-115
⑦	Positive Return Follower	2	S45C(1045)
⑧	Slide Guide	1	Bronze with Graphite(SO#50SP7)
⑨	Spring Block	1	SS400(1020)
⑩	Safety Plate	1	SS400(1020)
⑪	Dowel Pin with Female Thread	4	SUJ2 φ8×30
⑫	Coned Disc Spring	2	M6
⑬	Hexagon Socket Head Bolt	1	SCM435 M12×35
⑭	Hexagon Socket Head Bolt	2	SCM435 M12×40
⑮	Hexagon Socket Head Bolt	4	SCM435 M10×25
⑯	Hexagon Socket Head Bolt	2	SCM435 M10×30
⑰	Hexagon Socket Brazier Head Bolt	2	SCM435 LCS8-18
⑱	Hexagon Socket Head Bolt	2	SCM435 M6×10
⑲	Spacer	1	SS400(1020)

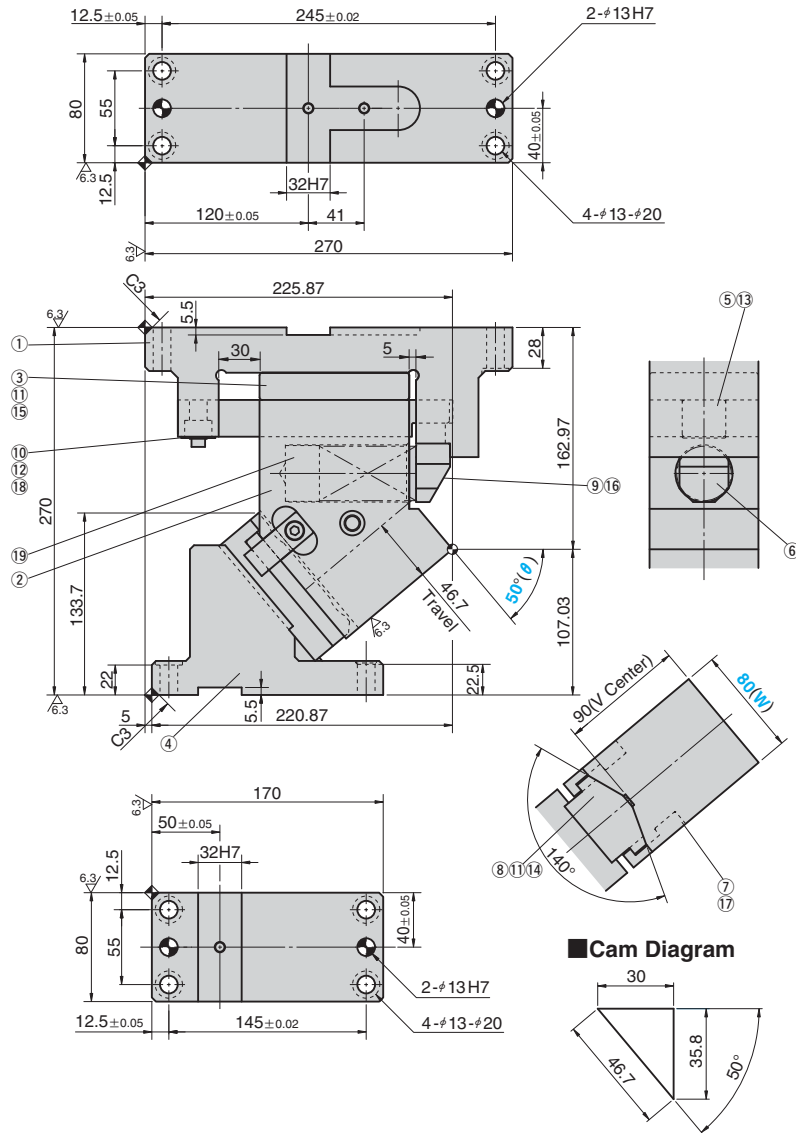
Spring Diagram

(Stripping Force at punch retraction of 5mm)

- Spring used TJL40-115 (1 piece)
- Spring constant 43.5N/mm (4.43kgf/mm)



UCMSG80 - 50



Cam Diagram

Travel S	Working Force kN(tonf)		Spring Force N(kgf)		Total Weight kg	Catalog No.	(W)	(θ)
	Standard Working Force (one million strokes)	Allowable Working Force (300,000 strokes)	Initial Load	Final Load				
46.7	49.0 (5.0)	98.0 (10.0)	609.0 (62.0)	1914.0 (194.9)	30.0	UCMSG	80	50



Order

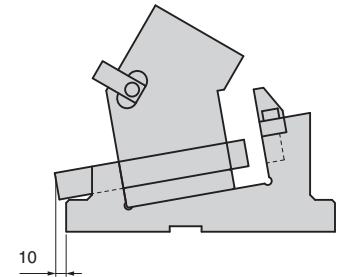
Catalog No. **UCMSG** (W) **80** - (θ) **50**



Option

Option Code	Specification
K	A metric key is attached. (It is not assembled to the main unit.)
KA	Metric dedicated key is attached for both cam holder and driver. (It is not assembled to the main unit.)
N12	Dowel pin holes of cam holder and cam driver are changed to φ12.

Space for removing



Order

UCMSG80 - 50 - K



For machining details or tapping hole and dowel hole (prepared hole and finished hole) for mounting of the retainer, refer to page 551. For detailed specification of the key, refer to page 1100.

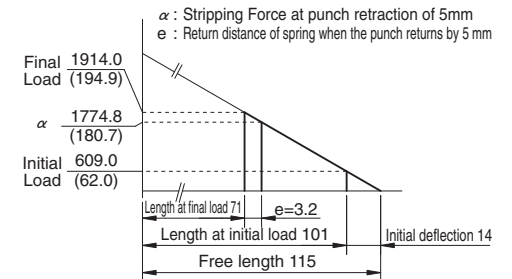
Table of Components

No.	Description	Qty	Material and Remark
①	Cam Holder	1	FCD450
②	Cam Slider	1	S45C(1045)
③	Lower Slider	1	Bronze with Graphite(SO#50SP2)
④	Cam Driver	1	FC250
⑤	Guide Bar	1	SCM440 with Graphite
⑥	Coil Spring	1	TJL40-115
⑦	Positive Return Follower	2	S45C(1045)
⑧	Slide Guide	1	Bronze with Graphite(SO#50SP7)
⑨	Spring Block	1	SS400(1020)
⑩	Safety Plate	1	SS400(1020)
⑪	Dowel Pin with Female Thread	4	SUJ2 φ8×30
⑫	Coned Disc Spring	2	M6
⑬	Hexagon Socket Head Bolt	1	SCM435 M12×35
⑭	Hexagon Socket Head Bolt	2	SCM435 M12×40
⑮	Hexagon Socket Head Bolt	4	SCM435 M10×25
⑯	Hexagon Socket Head Bolt	2	SCM435 M10×30
⑰	Hexagon Socket Brazier Head Bolt	2	SCM435 LCS8-18
⑱	Hexagon Socket Head Bolt	2	SCM435 M6×10
⑲	Spacer	1	SS400(1020)

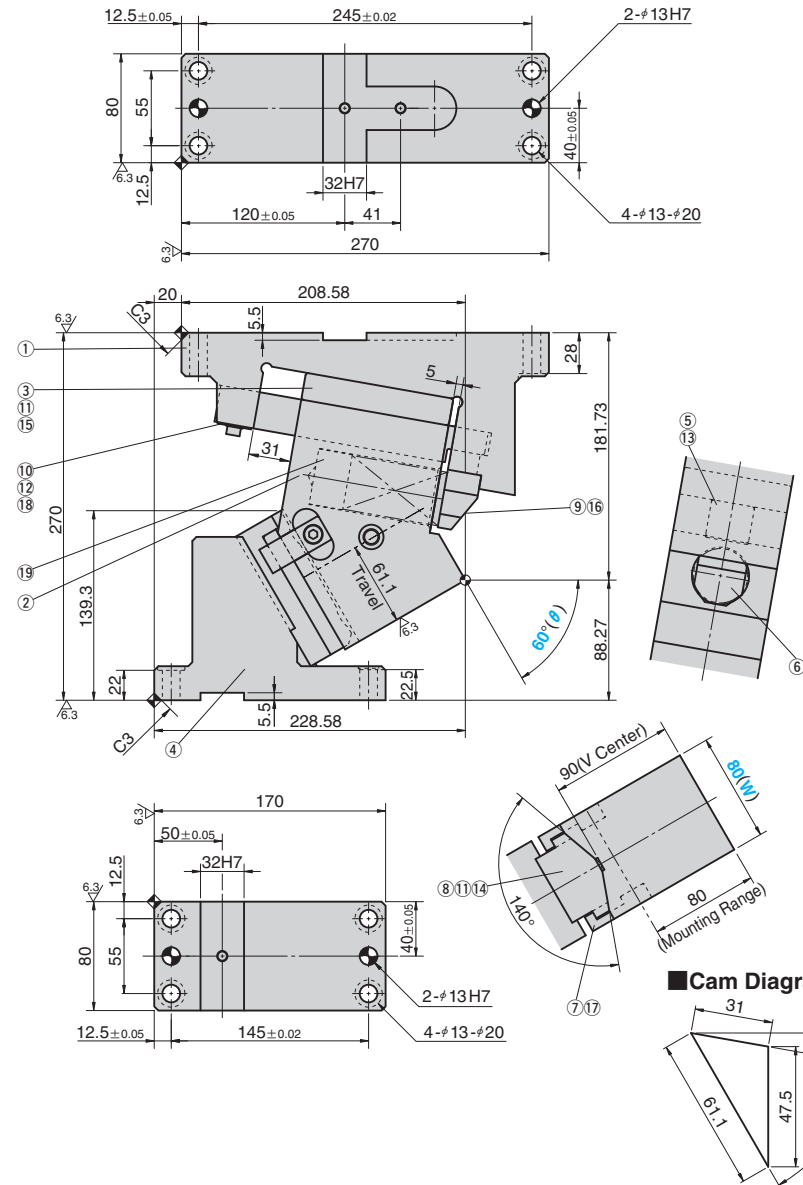
Spring Diagram

(Stripping Force at punch retraction of 5mm)

- Spring used TJL40-115 (1 piece)
- Spring constant 43.5N/mm (4.43kgf/mm)



UCMSG80 - 60



Travel S	Working Force kN(tonf)		Spring Force N(kgf)		Total Weight kg	Catalog No.	(W)	(θ)
	Standard Working Force (one million strokes)	Allowable Working Force (300,000 strokes)	Initial Load	Final Load				
61.1	49.0 (5.0)	98.0 (10.0)	565.5 (57.6)	1914.0 (194.9)	31.0	UCMSG	80	60



Order

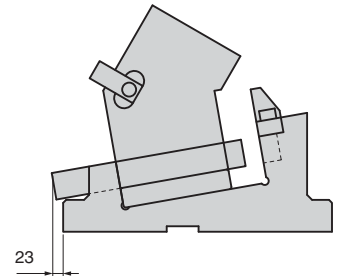
Catalog No. (W) - (θ)
UCMSG 80 - 60



Option

Option Code	Specification
K	A metric key is attached. (It is not assembled to the main unit.)
KA	Metric dedicated key is attached for both cam holder and driver. (It is not assembled to the main unit.)
N12	Dowel pin holes of cam holder and cam driver are changed to φ12.

Space for removing



Order

UCMSG80 - 60 - K

For machining details or tapping hole and dowel hole (prepared hole and finished hole) for mounting of the retainer, refer to page 551. For detailed specification of the key, refer to page 1100.

Table of Components

No.	Description	Qty	Material and Remark
①	Cam Holder	1	FCD450
②	Cam Slider	1	S45C(1045)
③	Lower Slider	1	Bronze with Graphite(SO#50SP2)
④	Cam Driver	1	FC250
⑤	Guide Bar	1	SCM440 with Graphite
⑥	Coil Spring	1	TJL40-115
⑦	Positive Return Follower	2	S45C(1045)
⑧	Slide Guide	1	Bronze with Graphite(SO#50SP7)
⑨	Spring Block	1	SS400(1020)
⑩	Safety Plate	1	SS400(1020)
⑪	Dowel Pin with Female Thread	4	SUJ2 φ8×30
⑫	Coned Disc Spring	2	M6
⑬	Hexagon Socket Head Bolt	1	SCM435 M12×35
⑭	Hexagon Socket Head Bolt	2	SCM435 M12×40
⑮	Hexagon Socket Head Bolt	4	SCM435 M10×25
⑯	Hexagon Socket Head Bolt	2	SCM435 M10×30
⑰	Hexagon Socket Brazier Head Bolt	2	SCM435 LCS8-18
⑱	Hexagon Socket Head Bolt	2	SCM435 M6×10
⑲	Spacer	1	SS400(1020)

Spring Diagram

(Stripping Force at punch retraction of 5mm)

- Spring used TJL40-115 (1 piece)
- Spring constant 43.5N/mm (4.43kgf/mm)

