



● **Features of UCMSC**

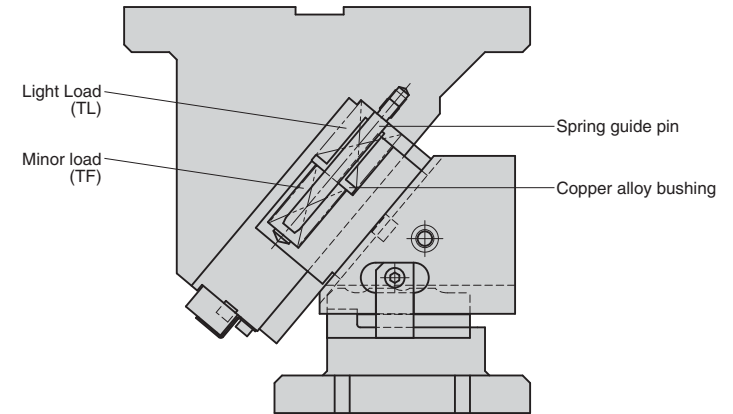
- Space saving design with the mount width equal to the cam width and reduction of weight.
- Automatic alignment mechanism of the V-shaped guide.
- Slider is removable from the back. This makes it possible to lay out the parts side by side.
- Available angle is 0° to 70° at increments of 5°.

● **Features of UCMSF**

- Space saving design with the mount width equal to the cam width and reduction of weight.
- Automatic alignment mechanism of the V-shaped guide.
- Slider is retractable from the back side. This makes it possible to lay out the parts side by side.
- Available angle is 0° to 70° at increments of 5°.
- 2-stage spring type is used.  
The spring force is about twice that of UCMSC.
- Durability in stamping is increased by changing the material of the cam slide guide. It is about 1.4 times that of UCMSC.

■ **Structure of UCMSF**

Although UCMSF has the same structure as UCMSC, the 2-stage spring type is used to improve the spring force.  
Copper alloy for high pressure (SO#50SP7) is used for the cam slide guide (cam bottom) to increase the force.

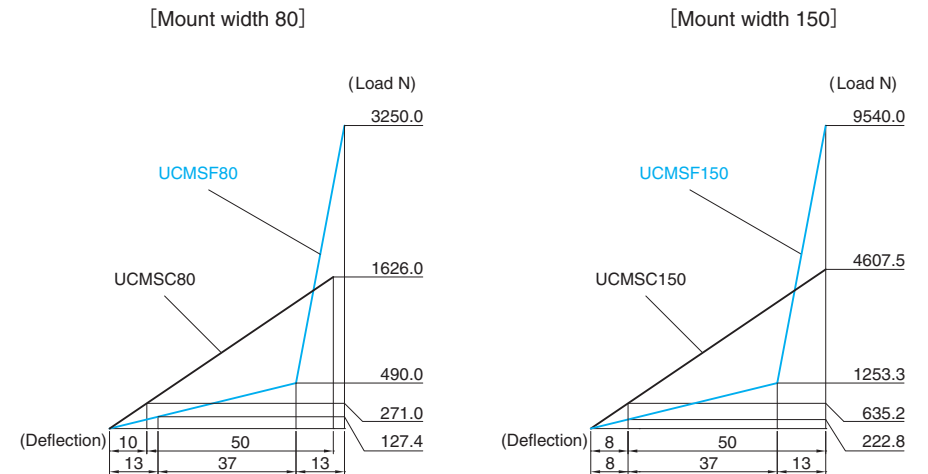


■ **Performance Specifications**

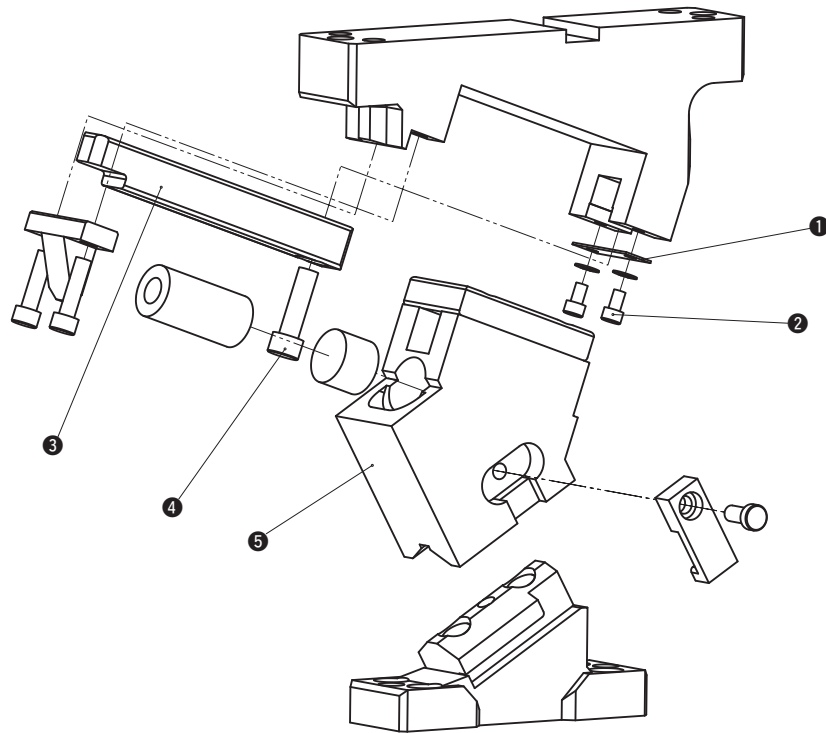
Catalog No.	Mount width	Working angle (increments of 5°)	Working Force kN(tonf)		Spring Force (Final Load) N(kgf)	Shut height
			Standard Working Force (one million strokes)	Allowable Working Force (300,000 strokes)		
UCMSC	50	0°~70°	19.6 (2.0)	39.2 (4.0)	* about 980 (100)	200
	65	0°~70°	19.6 (2.0)	39.2 (4.0)	* about 1220 (124)	180(0~45°) 190(50~55°) 210(60~70°)
	80	0°~70°	39.2 (4.0)	78.4 (8.0)	* about 1600 (163)	270
	150	0°~70°	88.2 (9.0)	132.3 (13.5)	4607.5 (470.2)	270
UCMSF	80	0°~70°	54.9 (5.6)	109.8 (11.2)	3250.0 (331.4)	270
	150	0°~70°	123.5 (12.6)	185.2 (18.9)	9540.0 (973.4)	270

\* There are some differences depending on the angle.

● **Comparison of Spring Diagram of UCMSC and UCMSF**



## ■UCMSC50 Structure and Assembly / Disassembly



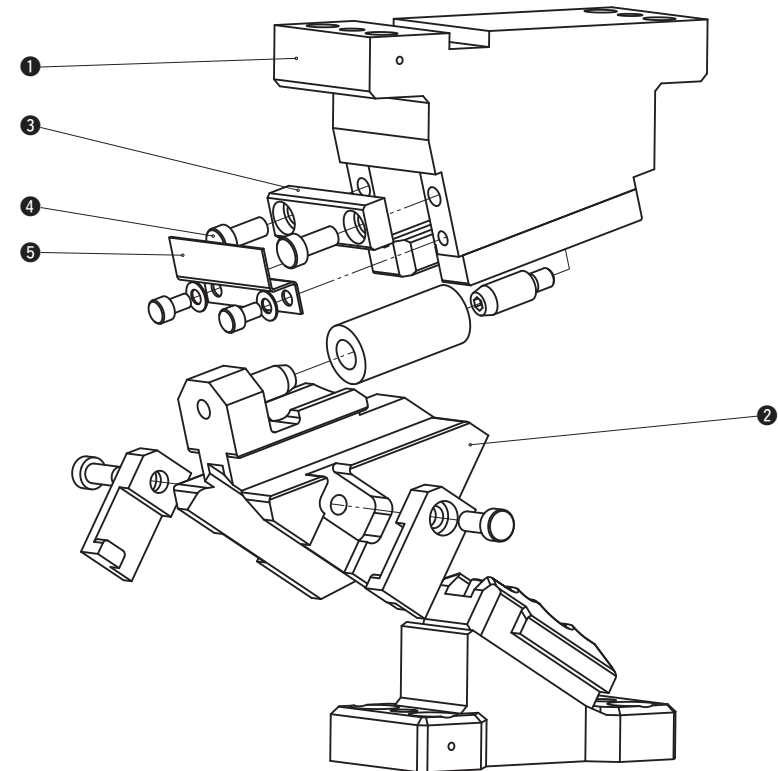
## ●Disassembly method of UCMSC50

- 1) Remove hexagon socket head bolt (2) and remove safety plate (1).
- 2) Remove hexagon socket head bolt (4).
- 3) Shift guide bar (3) to the back then remove cam slider (5) from cam holder.

## ●Assembly method of UCMSC50

- 1) Assemble components in the reverse order of disassembly.
  - Make sure that there is no foreign matter on the sliding area and assemble components.
  - The clearance between the guide bar/cam slider and the cam holder is controlled. Match the stamped serial number on the holder and slider before assembly.
  - When cam is disassembled and then reassembled, please do not forget to assemble all bolts provided.

## ■UCMSC65 Structure and Assembly / Disassembly



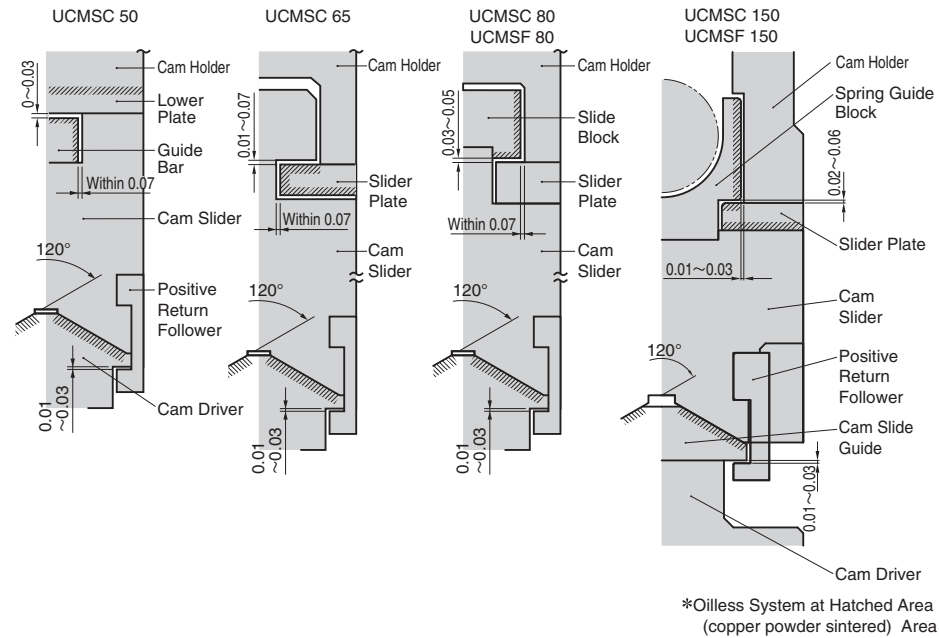
## ●Disassembly method of UCMSC65

- 1) Remove safety plate(5).
- 2) Loosen hexagon socket head bolt (4) and remove stopper plate (3).
- 3) Pull and remove cam slider (2) from cam holder (1) to the rear.

## ●Assembly method of UCMSC65

- 1) Assemble components in the reverse order of disassembly.
  - Make sure that there is no foreign matter on the sliding area and assemble components.
  - The clearance between the guide bar/cam slider and the cam holder is controlled. Match the stamped serial number on the holder and slider before assembly.
  - When cam is disassembled and then reassembled, please do not forget to assemble all bolts provided.

### Slide Structure and Positive Return Structure



### General Description of Option

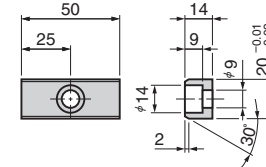
Option Code	K	TK	SC	WC	S	N12	N16
<b>Details</b>	Key is attached for the cam holder	T-shaped key type is used for both holder and driver.	The mount surface is pulled forward (in increments of 1mm).	The mount surface width is widened to the constant size.	The jig for locking the bottom dead center is accompanied.	The dowel holes for the cam holder and cam driver are changed to $\phi 12H7$ .	The dowel holes for the cam holder and cam driver are changed to $\phi 16H7$ .
<b>Catalog No.</b>							
UCMSC	50	○	—	○	—	○	—
	65	○	—	○	—	—	—
	80	○	—	○	—	—	○
UCMSF	150	○	○	—	—	—	○
	80	○	—	○	—	—	○
	150	○	○	—	—	—	○

### Option of UCMSC and UCMSF

#### Key specification(-K)

##### • UCMSC 50/65

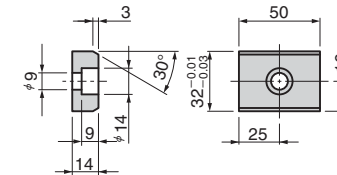
##### LKU20-50 (with 1-M8×15 bolts)



##### • UCMSC · UCMSF 80/150

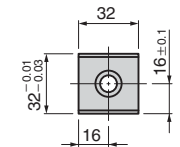
##### For 80

##### LKU32-50 (with 1-M8×15 bolts)



##### For 150

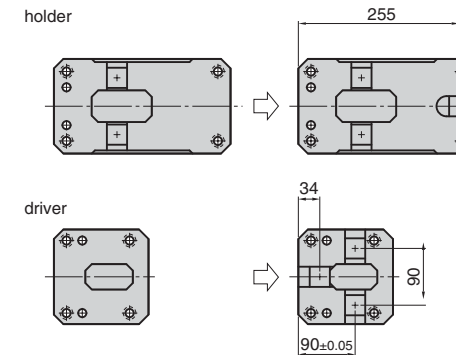
##### LKU32-32 (with 1-M8×15 bolts)



#### T-shaped key type(-TK)

##### UCMSC · UCMSF 150

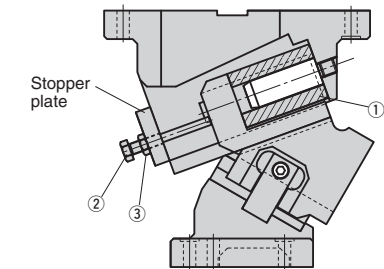
T-shaped key grooves are additionally machined as shown in the figure below.



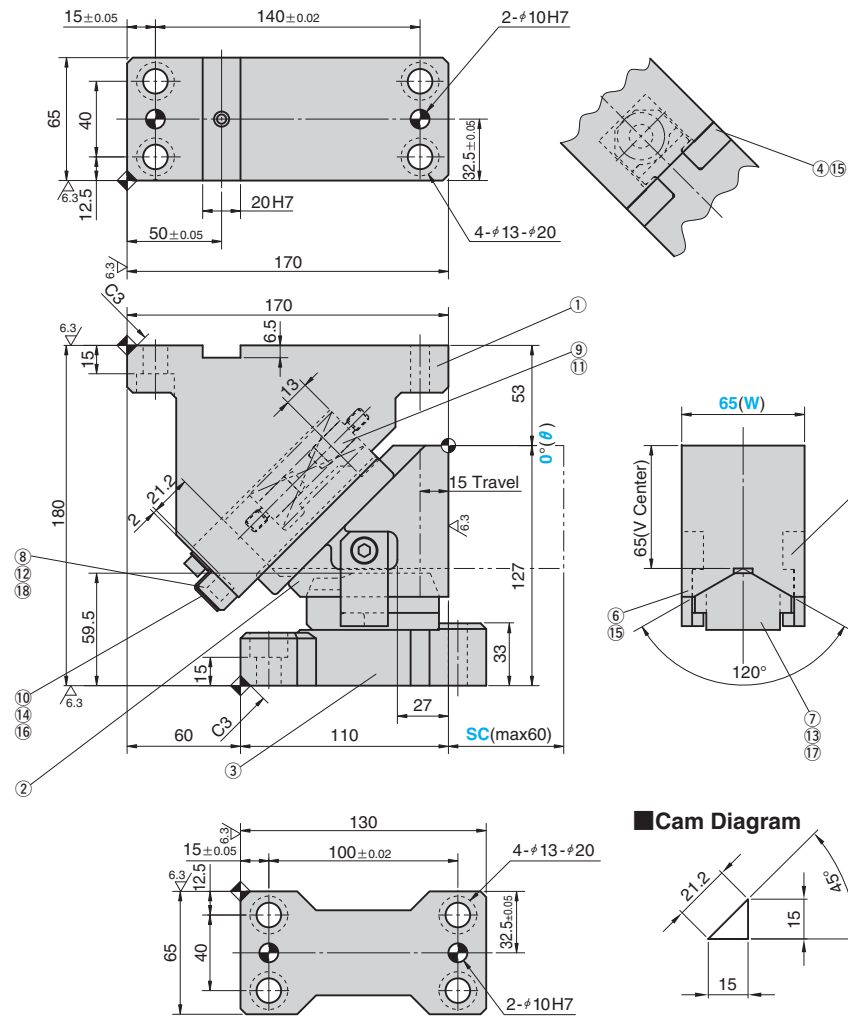
#### Home Position Lock Type(-S)

##### UCMSC · UCMSF 150

The jig (① Collar ② Bolt ③ Nut) for locking the bottom dead center is accompanied as shown in the figure below. The stopper plate has tapped threads for installation.



UCMSC65 - 00



Cam Diagram

Travel S	Working Force kN(tonf)		Spring Force N(kgf)		Total Weight kg	Catalog No.	(W)	(θ)
	Standard Working Force (one million strokes)	Allowable Working Force (300,000 strokes)	Initial Load	Final Load				
15.0	19.6 (2.0)	39.2 (4.0)	288.0 (29.4)	1186.1 (121.0)	9.5	UCMSC	65	00



Order

Catalog No. (W) - (θ)  
UCMSC 65 - 00



Option

Option Code	Specification
K	Dedicated key is attached. (It is not assembled to the main unit.)
SC	The mount surface is extended forward in the range of 1 to 60 mm (in increments of 1 mm).



Order

UCMSC65 - 00 - SC30 - K



For machining details or tapping hole and dowel hole (prepared hole and finished hole) for mounting of the retainer, refer to page 551. For detailed specification of the key, refer to page 726.

Space for removing

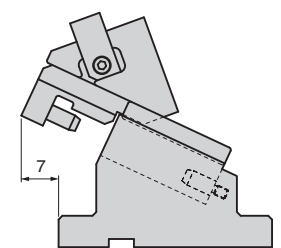


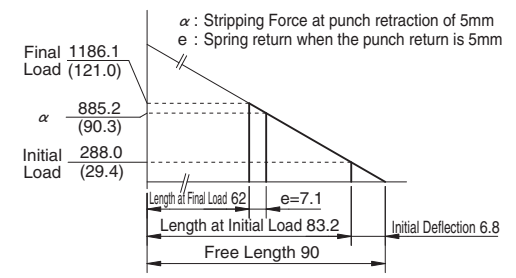
Table of Components

No.	Description	Qty	Material and Remark
①	Cam Holder	1	FCD450
②	Cam Slider	1	FC250
③	Cam Driver	1	FC250
④	Slide Plate	2	S45C Copper Powder Sintered(#220)
⑤	Positive Return A	1	S45C(1045)
⑥	Positive Return B	1	S45C(1045)
⑦	Cam Slide Guide	1	Bronze with Graphite(SO#50SP2)
⑧	Stopper Plate	1	SS400(1020)
⑨	Spring Guide Pin	2	SCM435
⑩	Safety Plate	1	SS400(1020)
⑪	Coil Spring	1	TM25-90
⑫	Stopper	2	Urethane
⑬	Dowel Pin with Female Thread	2	SUJ2 φ8×30
⑭	Coned Disc Spring	2	For M6
⑮	Hexagon Socket Brazier Head Bolt	6	SCM435 LCS8-18
⑯	Hexagon Socket Head Bolt	2	SCM435 M6×10
⑰	Hexagon Socket Head Bolt	2	SCM435 M10×30
⑱	Hexagon Socket Head Bolt	2	SCM435 M8×16

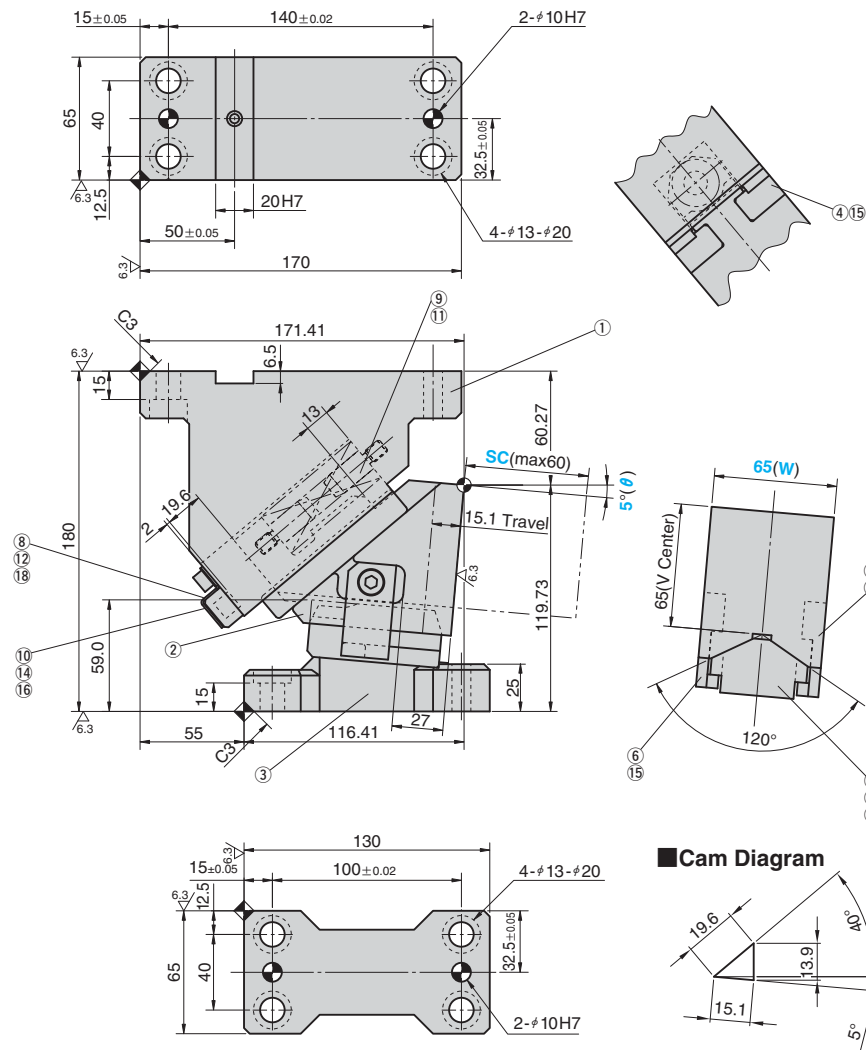
Spring Diagram

(Stripping Force at punch retraction of 5mm)

- Spring Used TM25-90(1 Piece)
- Spring Constant 42.36N/mm(4.32kgf/mm)



UCMSC65 - 05



Cam Diagram

Travel S	Working Force kN(tonf)		Spring Force N(kgf)		Total Weight kg	Catalog No.	(W)	(θ)
	Standard Working Force (one million strokes)	Allowable Working Force (300,000 strokes)	Initial Load	Final Load				
15.1	19.6 (2.0)	39.2 (4.0)	355.8 (36.3)	1186.1 (121.0)	9.3	UCMSC	65	05



Order

Catalog No. (W) - (θ)  
**UCMSC 65 - 05**



Option

Option Code	Specification
K	Dedicated key is attached. (It is not assembled to the main unit.)
SC	The mount surface is extended forward in the range of 1 to 60 mm (in increments of 1 mm).



Order

**UCMSC65 - 05 - SC30 - K**



For machining details or tapping hole and dowel hole (prepared hole and finished hole) for mounting of the retainer, refer to page 551. For detailed specification of the key, refer to page 726.

Space for removing

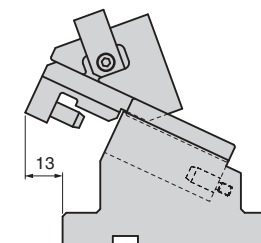


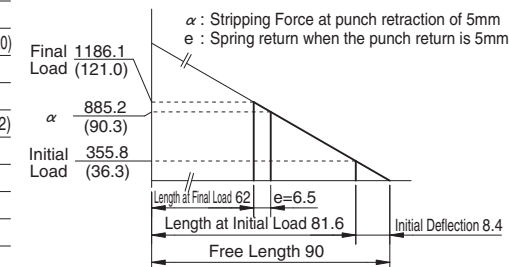
Table of Components

No.	Description	Qty	Material and Remark
①	Cam Holder	1	FCD450
②	Cam Slider	1	FC250
③	Cam Driver	1	FC250
④	Slide Plate	2	S45C Copper Powder Sintered(#220)
⑤	Positive Return A	1	S45C(1045)
⑥	Positive Return B	1	S45C(1045)
⑦	Cam Slide Guide	1	Bronze with Graphite(SO#50SP2)
⑧	Stopper Plate	1	SS400(1020)
⑨	Spring Guide Pin	2	SCM435
⑩	Safety Plate	1	SS400(1020)
⑪	Coil Spring	1	TM25-90
⑫	Stopper	2	Urethane
⑬	Dowel Pin with Female Thread	2	SUJ2 #8×30
⑭	Coned Disc Spring	2	For M6
⑮	Hexagon Socket Brazier Head Bolt	6	SCM435 LCS8-18
⑯	Hexagon Socket Head Bolt	2	SCM435 M6×10
⑰	Hexagon Socket Head Bolt	2	SCM435 M10×30
⑱	Hexagon Socket Head Bolt	2	SCM435 M8×16

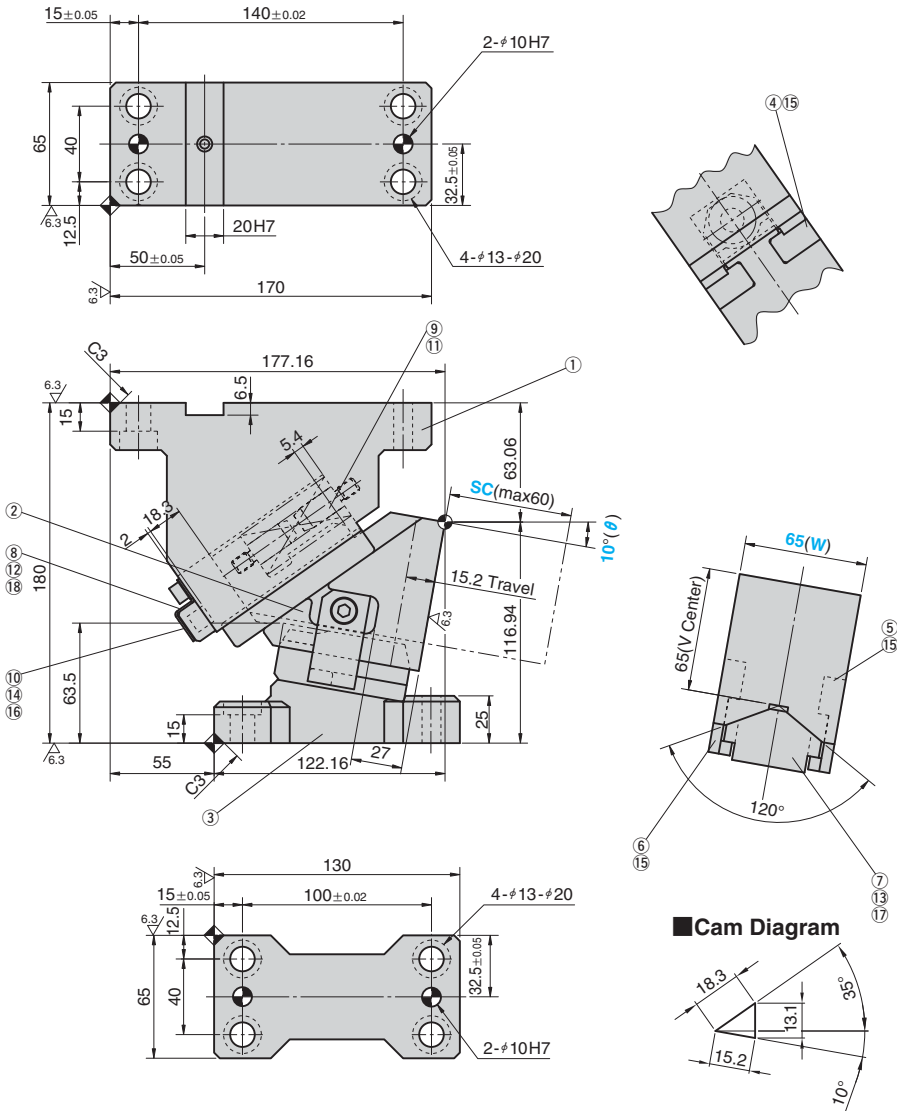
Spring Diagram

(Stripping Force at punch retraction of 5mm)

- Spring Used TM25-90(1 Piece)
- Spring Constant 42.36N/mm(4.32kgf/mm)



UCMSC65 - 10



Cam Diagram

Travel S	Working Force kN(tonf)		Spring Force N(kgf)		Total Weight kg	Catalog No.	(W)	(θ)
	Standard Working Force (one million strokes)	Allowable Working Force (300,000 strokes)	Initial Load	Final Load				
15.2	19.6 (2.0)	39.2 (4.0)	347.9 (35.5)	1220.1 (124.5)	9.0	UCMSC	65	10



Order

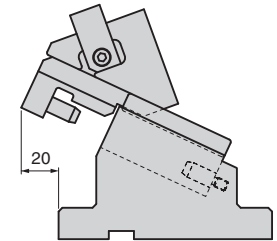
Catalog No. (W) - (θ)  
UCMSC 65 - 10



Option

Option Code	Specification
K	Dedicated key is attached. (It is not assembled to the main unit.)
SC	The mount surface is extended forward in the range of 1 to 60 mm (in increments of 1 mm).

Space for removing



Order

UCMSC65 - 10 - SC30 - K



For machining details or tapping hole and dowel hole (prepared hole and finished hole) for mounting of the retainer, refer to page 551. For detailed specification of the key, refer to page 726.

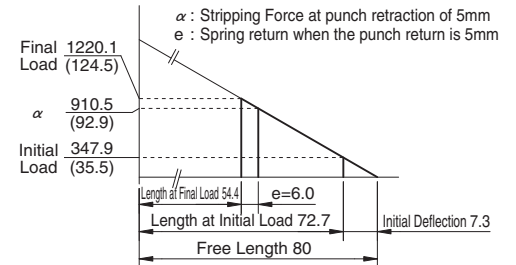
Table of Components

No.	Description	Qty	Material and Remark
①	Cam Holder	1	FCD450
②	Cam Slider	1	FC250
③	Cam Driver	1	FC250
④	Slide Plate	2	S45C Copper Powder Sintered(#220)
⑤	Positive Return A	1	S45C(1045)
⑥	Positive Return B	1	S45C(1045)
⑦	Cam Slide Guide	1	Bronze with Graphite(SO#50SP2)
⑧	Stopper Plate	1	SS400(1020)
⑨	Spring Guide Pin	2	SCM435
⑩	Safety Plate	1	SS400(1020)
⑪	Coil Spring	1	TM25-80
⑫	Stopper	2	Urethane
⑬	Dowel Pin with Female Thread	2	SUJ2 φ8×30
⑭	Coned Disc Spring	2	For M6
⑮	Hexagon Socket Brazier Head Bolt	6	SCM435 LCS8-18
⑯	Hexagon Socket Head Bolt	2	SCM435 M6×10
⑰	Hexagon Socket Head Bolt	2	SCM435 M10×30
⑱	Hexagon Socket Head Bolt	2	SCM435 M8×16

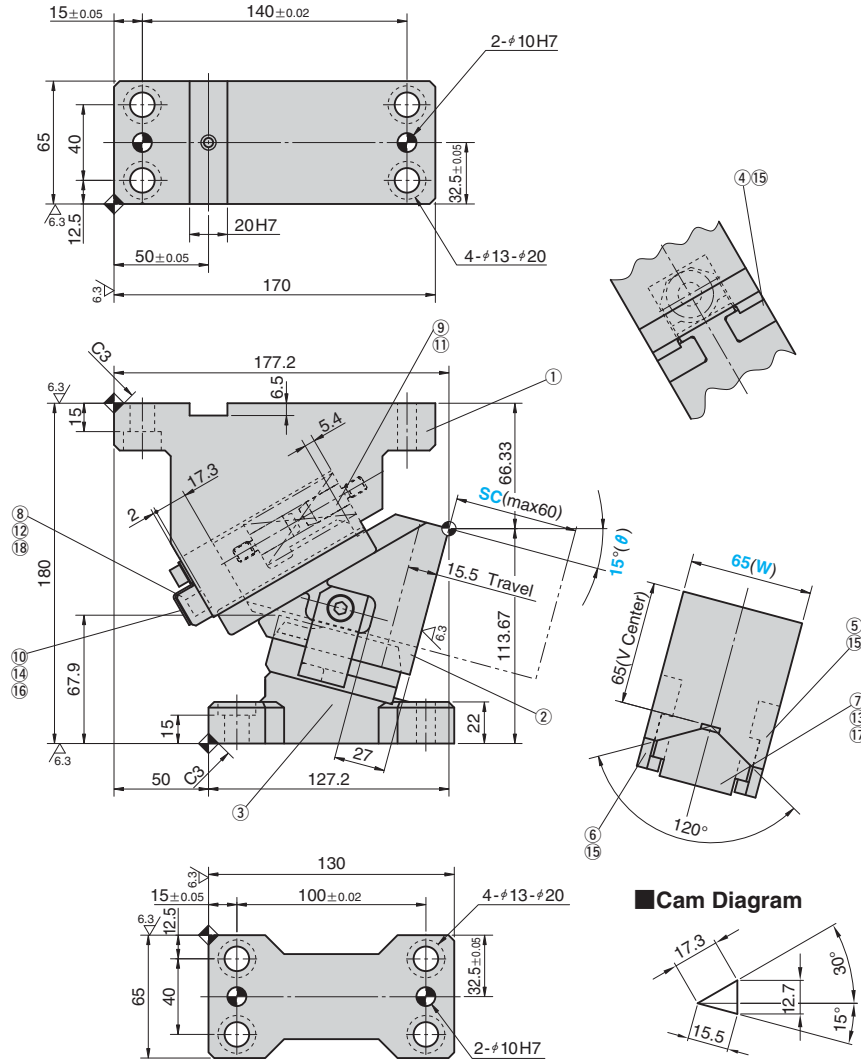
Spring Diagram

(Stripping Force at punch retraction of 5mm)

- Spring Used TM25-80(1 Piece)
- Spring Constant 47.66N/mm(4.86kgf/mm)



UCMSC65 - 15



Cam Diagram

Travel S	Working Force kN(tonf)		Spring Force N(kgf)		Total Weight kg	Catalog No.	(W)	(θ)
	Standard Working Force (one million strokes)	Allowable Working Force (300,000 strokes)	Initial Load	Final Load				
15.5	19.6 (2.0)	39.2 (4.0)	395.6 (40.3)	1220.1 (124.5)	8.8	UCMSC	65	15



Order

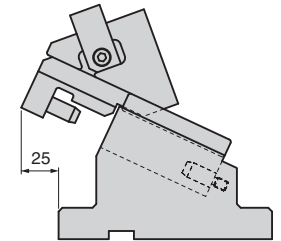
Catalog No. (W) - (θ)  
UCMSC 65 - 15



Option

Option Code	Specification
K	Dedicated key is attached. (It is not assembled to the main unit.)
SC	The mount surface is extended forward in the range of 1 to 60 mm (in increments of 1 mm).

Space for removing



Order

UCMSC65 - 15 - SC30 - K



For machining details or tapping hole and dowel hole (prepared hole and finished hole) for mounting of the retainer, refer to page 551. For detailed specification of the key, refer to page 726.

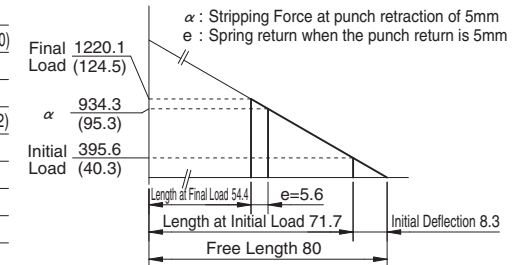
Table of Components

No.	Description	Qty	Material and Remark
①	Cam Holder	1	FCD450
②	Cam Slider	1	FC250
③	Cam Driver	1	FC250
④	Slide Plate	2	S45C Copper Powder Sintered(#220)
⑤	Positive Return A	1	S45C(1045)
⑥	Positive Return B	1	S45C(1045)
⑦	Cam Slide Guide	1	Bronze with Graphite(SO#50SP2)
⑧	Stopper Plate	1	SS400(1020)
⑨	Spring Guide Pin	2	SCM435
⑩	Safety Plate	1	SS400(1020)
⑪	Coil Spring	1	TM25-80
⑫	Stopper	2	Urethane
⑬	Dowel Pin with Female Thread	2	SUJ2 #8×30
⑭	Coned Disc Spring	2	For M6
⑮	Hexagon Socket Brazier Head Bolt	6	SCM435 LCS8-18
⑯	Hexagon Socket Head Bolt	2	SCM435 M6×10
⑰	Hexagon Socket Head Bolt	2	SCM435 M10×30
⑱	Hexagon Socket Head Bolt	2	SCM435 M8×16

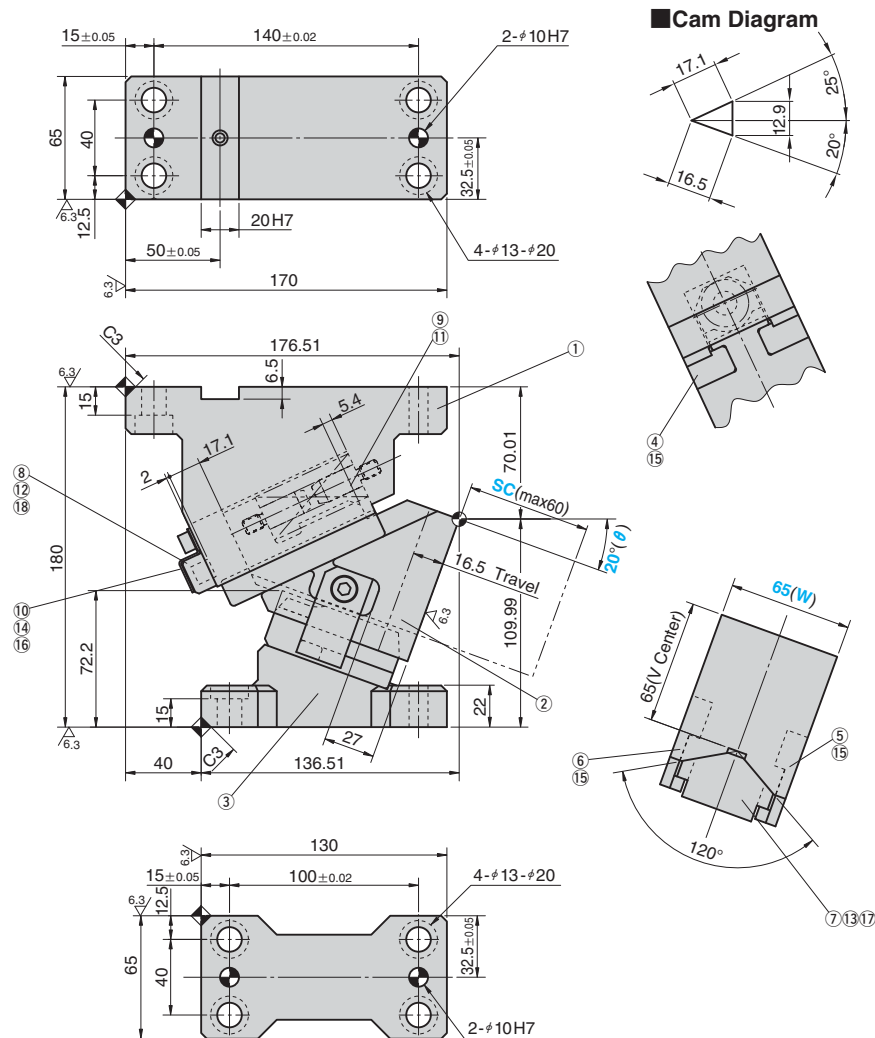
Spring Diagram

(Stripping Force at punch retraction of 5mm)

- Spring Used TM25-80(1 Piece)
- Spring Constant 47.66N/mm(4.86kgf/mm)



UCMSC65 - 20



Cam Diagram

Travel S	Working Force kN(tonf)		Spring Force N(kgf)		Total Weight kg	Catalog No.	(W)	(θ)
	Standard Working Force (one million strokes)	Allowable Working Force (300,000 strokes)	Initial Load	Final Load				
16.5	19.6 (2.0)	39.2 (4.0)	405.1 (41.3)	1220.1 (124.5)	8.6	UCMSC	65	20



Order

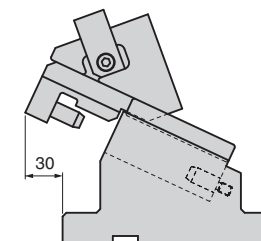
Catalog No. (W) - (θ)  
**UCMSC 65 - 20**



Option

Option Code	Specification
K	Dedicated key is attached. (It is not assembled to the main unit.)
SC	The mount surface is extended forward in the range of 1 to 60 mm (in increments of 1 mm).

Space for removing



Order

**UCMSC65 - 20 - SC30 - K**



For machining details or tapping hole and dowel hole (prepared hole and finished hole) for mounting of the retainer, refer to page 551. For detailed specification of the key, refer to page 726.

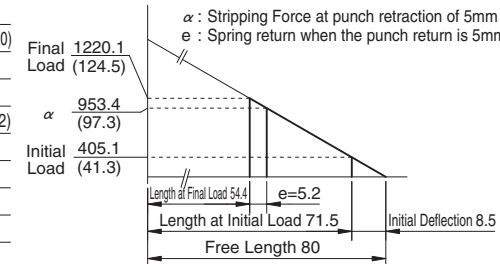
Table of Components

No.	Description	Qty	Material and Remark
①	Cam Holder	1	FCD450
②	Cam Slider	1	FC250
③	Cam Driver	1	FC250
④	Slide Plate	2	S45C Copper Powder Sintered(#220)
⑤	Positive Return A	1	S45C(1045)
⑥	Positive Return B	1	S45C(1045)
⑦	Cam Slide Guide	1	Bronze with Graphite(SO#50SP2)
⑧	Stopper Plate	1	SS400(1020)
⑨	Spring Guide Pin	2	SCM435
⑩	Safety Plate	1	SS400(1020)
⑪	Coil Spring	1	TM25-80
⑫	Stopper	2	Urethane
⑬	Dowel Pin with Female Thread	2	SUJ2 #8×30
⑭	Coned Disc Spring	2	For M6
⑮	Hexagon Socket Brazier Head Bolt	6	SCM435 LCS8-18
⑯	Hexagon Socket Head Bolt	2	SCM435 M6×10
⑰	Hexagon Socket Head Bolt	2	SCM435 M10×30
⑱	Hexagon Socket Head Bolt	2	SCM435 M8×16

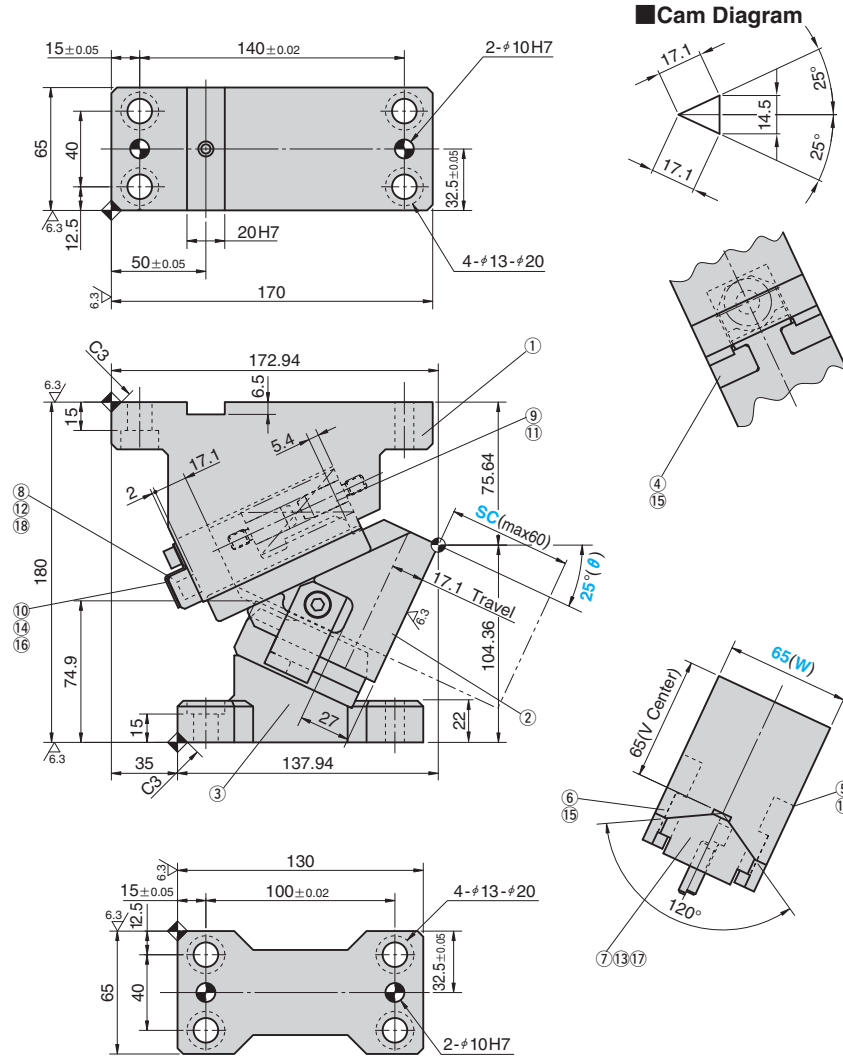
Spring Diagram

(Stripping Force at punch retraction of 5mm)

- Spring Used TM25-80(1 Piece)
- Spring Constant 47.66N/mm(4.86kgf/mm)



UCMSC65 - 25



Cam Diagram

Travel S	Working Force kN(tonf)		Spring Force N(kgf)		Total Weight kg	Catalog No.	(W)	(θ)
	Standard Working Force (one million strokes)	Allowable Working Force (300,000 strokes)	Initial Load	Final Load				
17.1	19.6 (2.0)	39.2 (4.0)	405.1 (41.3)	1220.1 (124.5)	8.5	UCMSC	65	25



Order

Catalog No. (W) - (θ)  
**UCMSC 65 - 25**



Option

Option Code	Specification
K	Dedicated key is attached. (It is not assembled to the main unit.)
SC	The mount surface is extended forward in the range of 1 to 60 mm (in increments of 1 mm).



Order

**UCMSC65 - 25 - SC30 - K**



For machining details or tapping hole and dowel hole (prepared hole and finished hole) for mounting of the retainer, refer to page 551. For detailed specification of the key, refer to page 726.

Space for removing

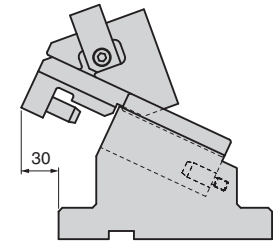


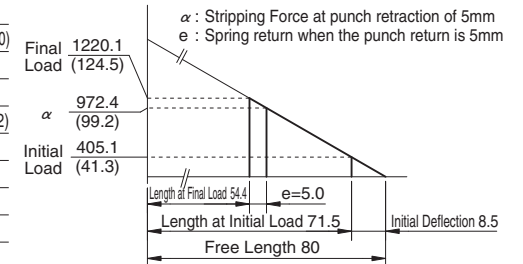
Table of Components

No.	Description	Qty	Material and Remark
①	Cam Holder	1	FCD450
②	Cam Slider	1	FC250
③	Cam Driver	1	FC250
④	Slide Plate	2	S45C Copper Powder Sintered(#220)
⑤	Positive Return A	1	S45C(1045)
⑥	Positive Return B	1	S45C(1045)
⑦	Cam Slide Guide	1	Bronze with Graphite(SO#50SP2)
⑧	Stopper Plate	1	SS400(1020)
⑨	Spring Guide Pin	2	SCM435
⑩	Safety Plate	1	SS400(1020)
⑪	Coil Spring	1	TM25-80
⑫	Stopper	2	Urethane
⑬	Dowel Pin with Female Thread	2	SUJ2 #8×30
⑭	Coned Disc Spring	2	For M6
⑮	Hexagon Socket Brazier Head Bolt	6	SCM435 LCS8-18
⑯	Hexagon Socket Head Bolt	2	SCM435 M6×10
⑰	Hexagon Socket Head Bolt	2	SCM435 M10×30
⑱	Hexagon Socket Head Bolt	2	SCM435 M8×16

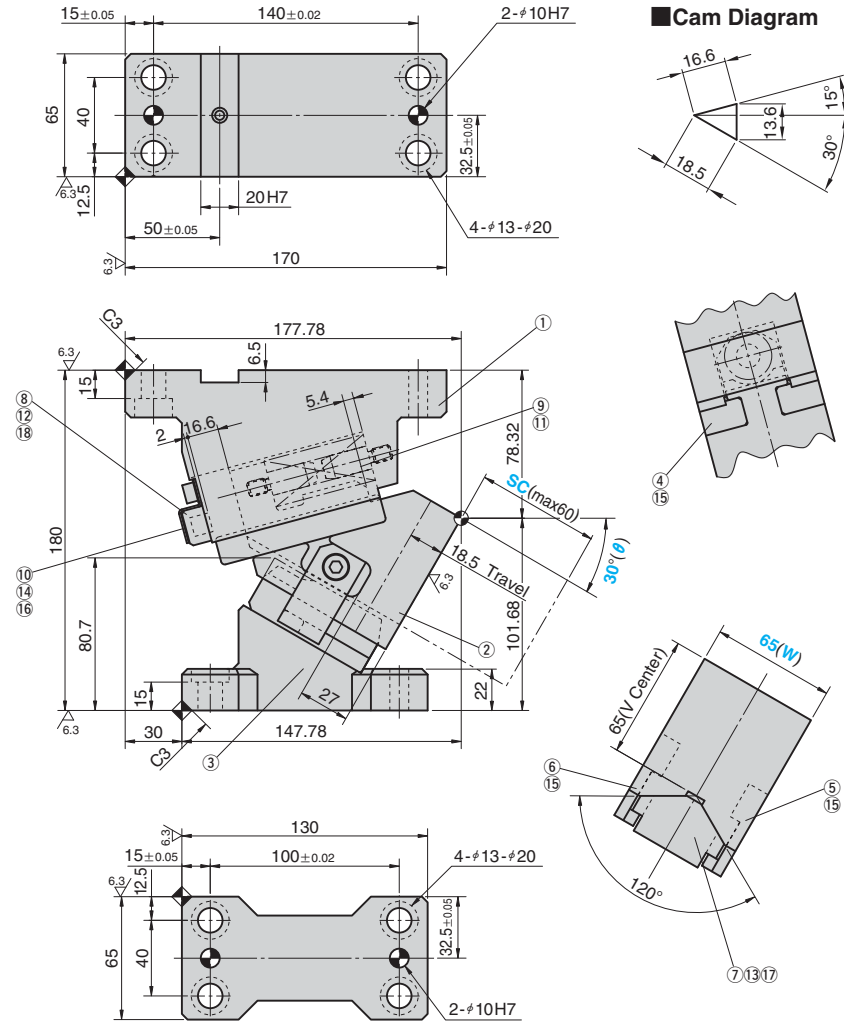
Spring Diagram

(Stripping Force at punch retraction of 5mm)

- Spring Used TM25-80(1 Piece)
- Spring Constant 47.66N/mm(4.86kgf/mm)

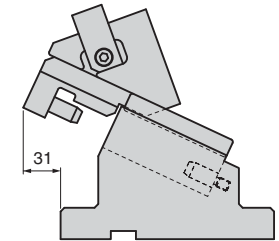


UCMSC65 - 30



Cam Diagram

Space for removing



Travel S	Working Force kN(tonf)		Spring Force N(kgf)		Total Weight kg	Catalog No.	(W)	(θ)
	Standard Working Force (one million strokes)	Allowable Working Force (300,000 strokes)	Initial Load	Final Load				
18.5	19.6 (2.0)	39.2 (4.0)	428.9 (43.8)	1220.1 (124.5)	8.3	UCMSC	65	30



Order

Catalog No. (W) - (θ)  
UCMSC 65 - 30



Option

Option Code	Specification
K	Dedicated key is attached. (It is not assembled to the main unit.)
SC	The mount surface is extended forward in the range of 1 to 60 mm (in increments of 1 mm).



Order

UCMSC65 - 30 - SC30 - K



For machining details or tapping hole and dowel hole (prepared hole and finished hole) for mounting of the retainer, refer to page 551. For detailed specification of the key, refer to page 726.

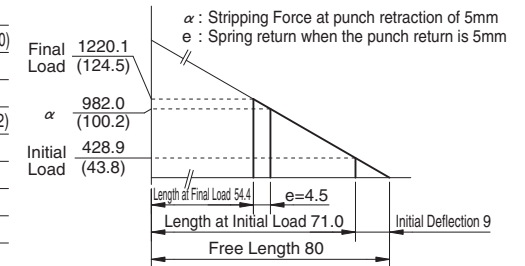
Table of Components

No.	Description	Qty	Material and Remark
①	Cam Holder	1	FCD450
②	Cam Slider	1	FC250
③	Cam Driver	1	FC250
④	Slide Plate	2	S45C Copper Powder Sintered(#220)
⑤	Positive Return A	1	S45C(1045)
⑥	Positive Return B	1	S45C(1045)
⑦	Cam Slide Guide	1	Bronze with Graphite(SO#50SP2)
⑧	Stopper Plate	1	SS400(1020)
⑨	Spring Guide Pin	2	SCM435
⑩	Safety Plate	1	SS400(1020)
⑪	Coil Spring	1	TM25-80
⑫	Stopper	2	Urethane
⑬	Dowel Pin with Female Thread	2	SUJ2 φ8×30
⑭	Coned Disc Spring	2	For M6
⑮	Hexagon Socket Brazier Head Bolt	6	SCM435 LCS8-18
⑯	Hexagon Socket Head Bolt	2	SCM435 M6×10
⑰	Hexagon Socket Head Bolt	2	SCM435 M10×30
⑱	Hexagon Socket Head Bolt	2	SCM435 M8×16

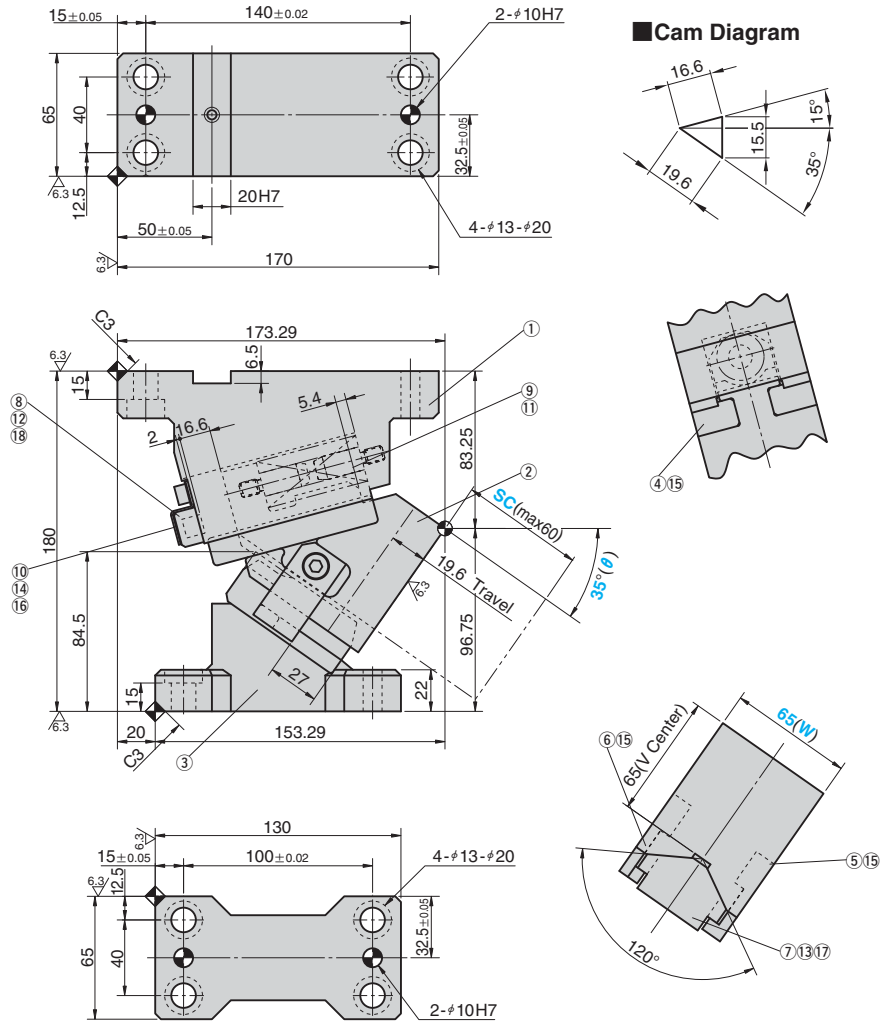
Spring Diagram

(Stripping Force at punch retraction of 5mm)

- Spring Used TM25-80(1 Piece)
- Spring Constant 47.66N/mm(4.86kgf/mm)

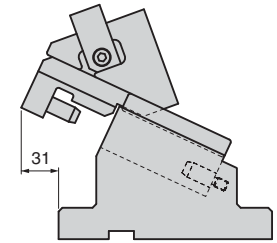


UCMSC65 - 35



Cam Diagram

Space for removing



Travel S	Working Force kN(tonf)		Spring Force N(kgf)		Total Weight kg	Catalog No.	(W)	(θ)
	Standard Working Force (one million strokes)	Allowable Working Force (300,000 strokes)	Initial Load	Final Load				
19.6	19.6 (2.0)	39.2 (4.0)	428.9 (43.8)	1220.1 (124.5)	8.3	UCMSC	65	35



Order

Catalog No. (W) - (θ)

UCMSC 65 - 35



Option

Option Code	Specification
K	Dedicated key is attached. (It is not assembled to the main unit.)
SC	The mount surface is extended forward in the range of 1 to 60 mm (in increments of 1 mm).



Order

UCMSC65 - 35 - SC30 - K

For machining details or tapping hole and dowel hole (prepared hole and finished hole) for mounting of the retainer, refer to page 551. For detailed specification of the key, refer to page 726.

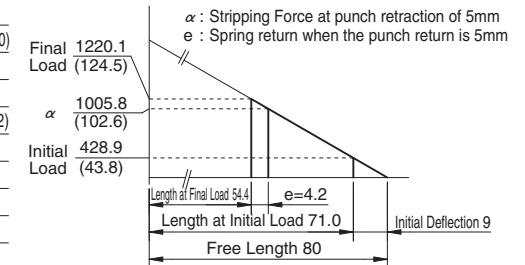
Table of Components

No.	Description	Qty	Material and Remark
①	Cam Holder	1	FCD450
②	Cam Slider	1	FC250
③	Cam Driver	1	FC250
④	Slide Plate	2	S45C Copper Powder Sintered(#220)
⑤	Positive Return A	1	S45C(1045)
⑥	Positive Return B	1	S45C(1045)
⑦	Cam Slide Guide	1	Bronze with Graphite(SO#50SP2)
⑧	Stopper Plate	1	SS400(1020)
⑨	Spring Guide Pin	2	SCM435
⑩	Safety Plate	1	SS400(1020)
⑪	Coil Spring	1	TM25-80
⑫	Stopper	2	Urethane
⑬	Dowel Pin with Female Thread	2	SUJ2 φ8×30
⑭	Coned Disc Spring	2	For M6
⑮	Hexagon Socket Brazier Head Bolt	6	SCM435 LCS8-18
⑯	Hexagon Socket Head Bolt	2	SCM435 M6×10
⑰	Hexagon Socket Head Bolt	2	SCM435 M10×30
⑱	Hexagon Socket Head Bolt	2	SCM435 M8×16

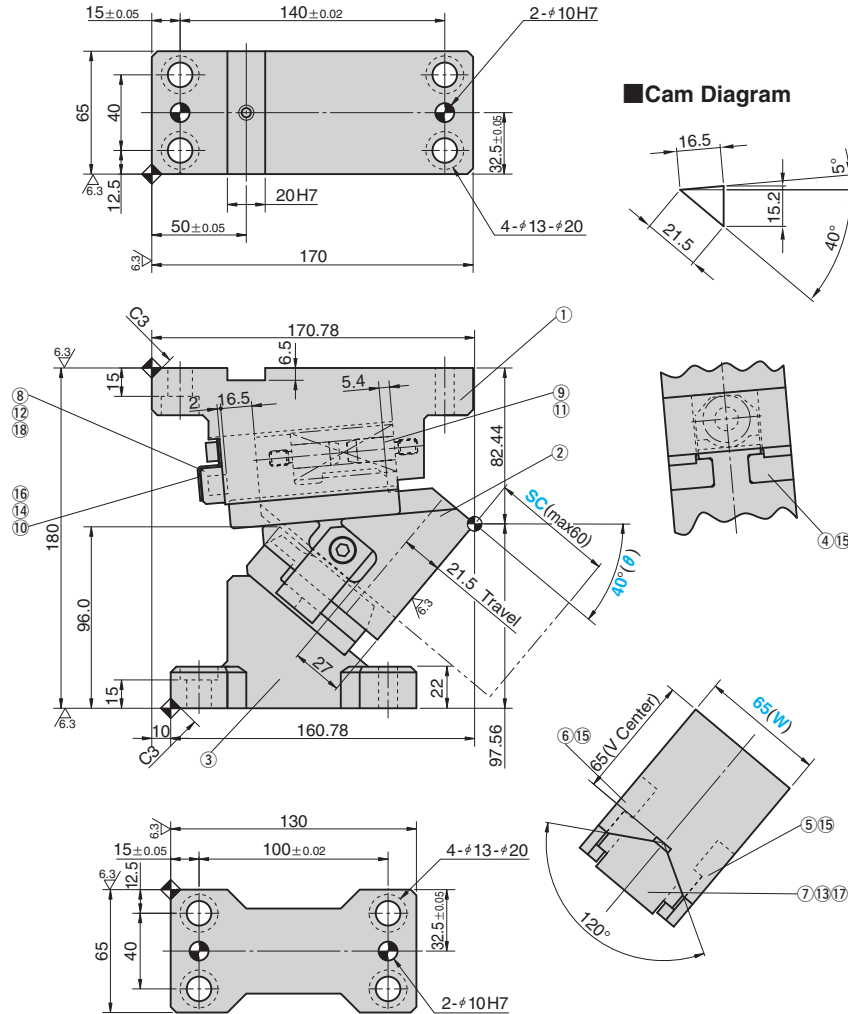
Spring Diagram

(Stripping Force at punch retraction of 5mm)

- Spring Used TM25-80(1 Piece)
- Spring Constant 47.66N/mm (4.86kgf/mm)



UCMSC65 - 40



Travel S	Working Force kN(tonf)		Spring Force N(kgf)		Total Weight kg	Catalog No.	(W)	(θ)
	Standard Working Force (one million strokes)	Allowable Working Force (300,000 strokes)	Initial Load	Final Load				
21.5	19.6 (2.0)	39.2 (4.0)	433.7 (44.3)	1220.1 (124.5)	8.1	UCMSC	65	40



Order

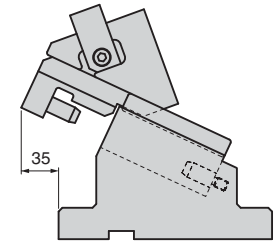
Catalog No.	(W)	(θ)
UCMSC	65	40



Option

Option Code	Specification
K	Dedicated key is attached. (It is not assembled to the main unit.)
SC	The mount surface is extended forward in the range of 1 to 60 mm (in increments of 1 mm).

Space for removing



Order

UCMSC65 - 40 - SC30 - K



For machining details or tapping hole and dowel hole (prepared hole and finished hole) for mounting of the retainer, refer to page 551. For detailed specification of the key, refer to page 726.

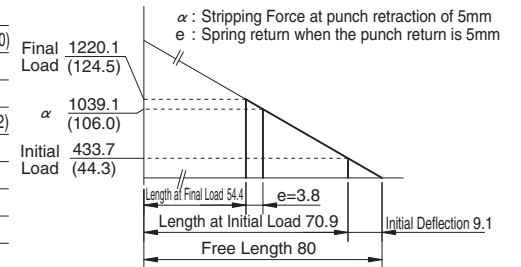
Table of Components

No.	Description	Qty	Material and Remark
①	Cam Holder	1	FCD450
②	Cam Slider	1	FC250
③	Cam Driver	1	FC250
④	Slide Plate	2	S45C Copper Powder Sintered(#220)
⑤	Positive Return A	1	S45C(1045)
⑥	Positive Return B	1	S45C(1045)
⑦	Cam Slide Guide	1	Bronze with Graphite(SO#50SP2)
⑧	Stopper Plate	1	SS400(1020)
⑨	Spring Guide Pin	2	SCM435
⑩	Safety Plate	1	SS400(1020)
⑪	Coil Spring	1	TM25-80
⑫	Stopper	2	Urethane
⑬	Dowel Pin with Female Thread	2	SUJ2 #8×30
⑭	Coned Disc Spring	2	For M6
⑮	Hexagon Socket Brazier Head Bolt	6	SCM435 LCS8-18
⑯	Hexagon Socket Head Bolt	2	SCM435 M6×10
⑰	Hexagon Socket Head Bolt	2	SCM435 M10×30
⑱	Hexagon Socket Head Bolt	2	SCM435 M8×16

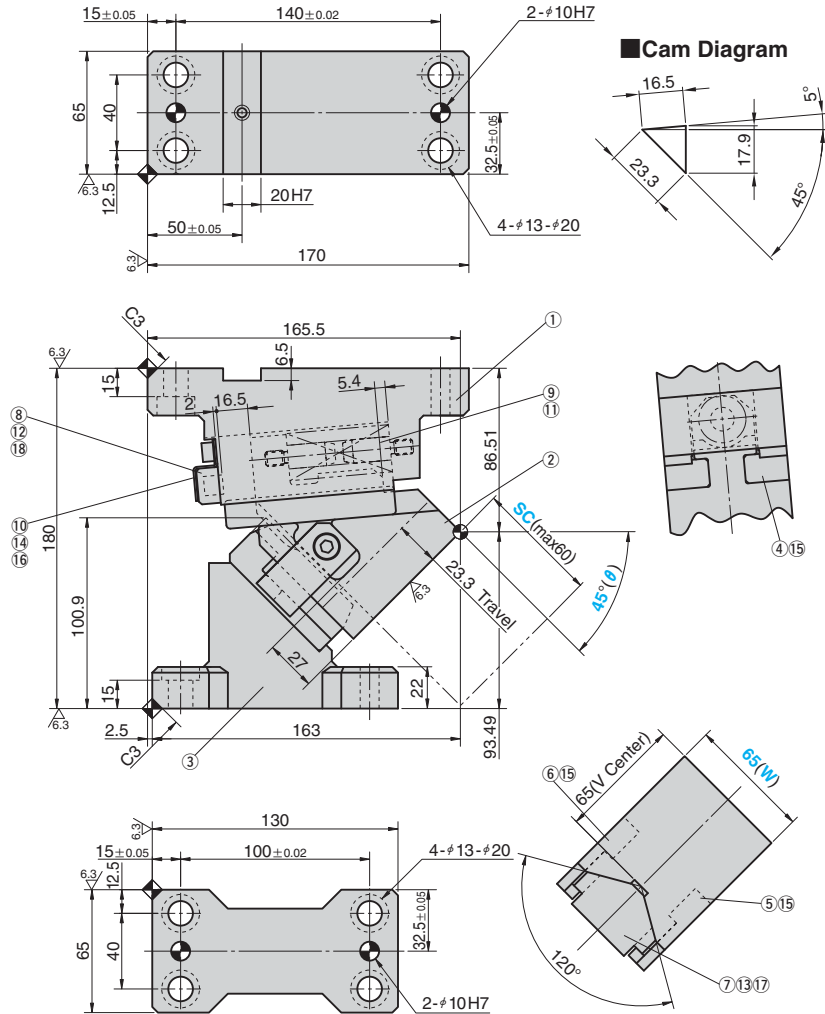
Spring Diagram

(Stripping Force at punch retraction of 5mm)

- Spring Used TM25-80(1 Piece)
- Spring Constant 47.66N/mm(4.86kgf/mm)



UCMSC65 - 45



Travel S	Working Force kN(tonf)		Spring Force N(kgf)		Total Weight kg	Catalog No.	(W)	(θ)
	Standard Working Force (one million strokes)	Allowable Working Force (300,000 strokes)	Initial Load	Final Load				
23.3	19.6 (2.0)	39.2 (4.0)	433.7 (44.3)	1220.1 (124.5)	8.1	UCMSC	65	45



Order

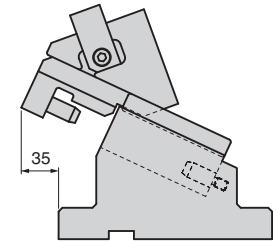
Catalog No.	(W)	-	(θ)
UCMSC	65	-	45



Option

Option Code	Specification
K	Dedicated key is attached. (It is not assembled to the main unit.)
SC	The mount surface is extended forward in the range of 1 to 60 mm (in increments of 1 mm).

Space for removing



Order

UCMSC65 - 45 - SC30 - K



For machining details or tapping hole and dowel hole (prepared hole and finished hole) for mounting of the retainer, refer to page 551. For detailed specification of the key, refer to page 726.



When the slider interferes with the die due to the protrusion length, you will need to machine the die for clearance.

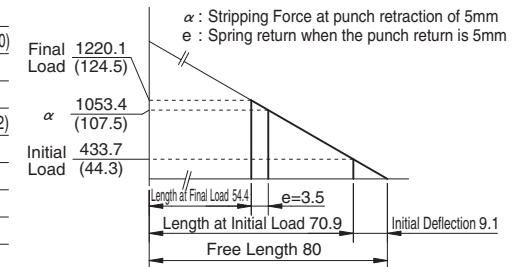
Table of Components

No.	Description	Qty	Material and Remark
①	Cam Holder	1	FCD450
②	Cam Slider	1	FC250
③	Cam Driver	1	FC250
④	Slide Plate	2	S45C Copper Powder Sintered(#220)
⑤	Positive Return A	1	S45C(1045)
⑥	Positive Return B	1	S45C(1045)
⑦	Cam Slide Guide	1	Bronze with Graphite(SO#50SP2)
⑧	Stopper Plate	1	SS400(1020)
⑨	Spring Guide Pin	2	SCM435
⑩	Safety Plate	1	SS400(1020)
⑪	Coil Spring	1	TM25-80
⑫	Stopper	2	Urethane
⑬	Dowel Pin with Female Thread	2	SUJ2 φ8×30
⑭	Coned Disc Spring	2	For M6
⑮	Hexagon Socket Brazier Head Bolt	6	SCM435 LCS8-18
⑯	Hexagon Socket Head Bolt	2	SCM435 M6×10
⑰	Hexagon Socket Head Bolt	2	SCM435 M10×30
⑱	Hexagon Socket Head Bolt	2	SCM435 M8×16

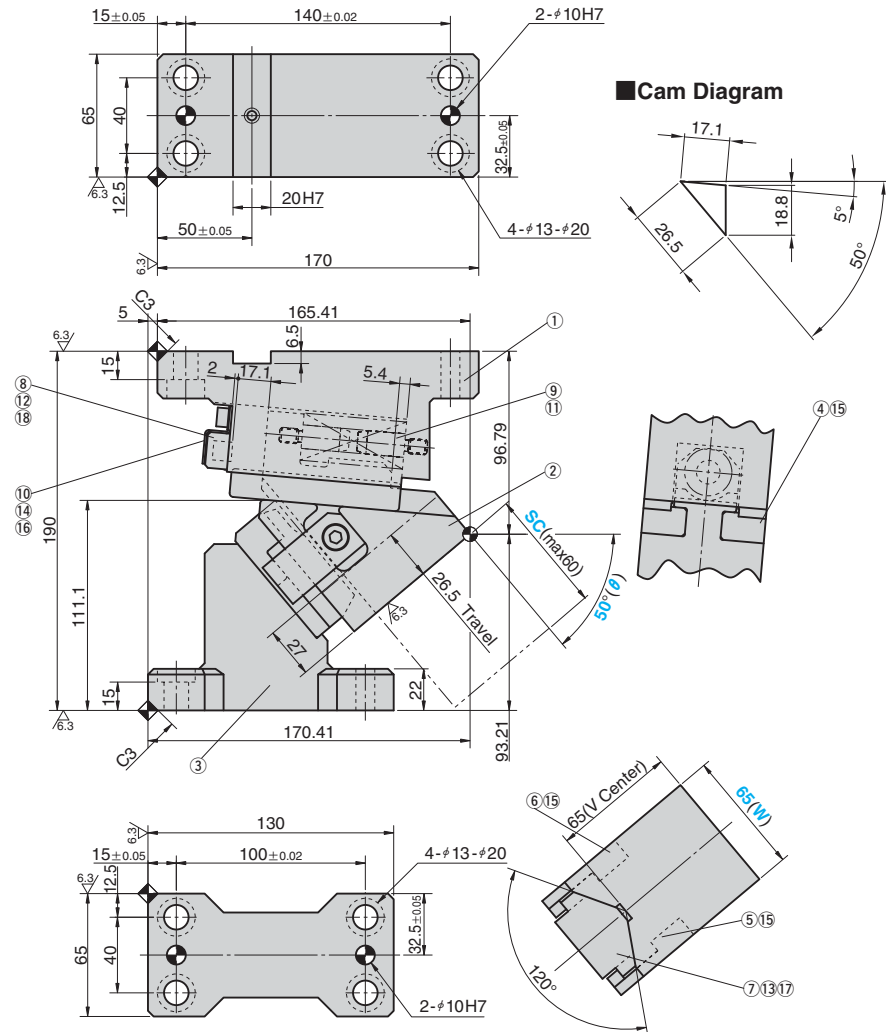
Spring Diagram

(Stripping Force at punch retraction of 5mm)

- Spring Used TM25-80(1 Piece)
- Spring Constant 47.66N/mm(4.86kgf/mm)



UCMSC65 - 50



Travel S	Working Force kN(tonf)		Spring Force N(kgf)		Total Weight kg	Catalog No.	(W)	(θ)
	Standard Working Force (one million strokes)	Allowable Working Force (300,000 strokes)	Initial Load	Final Load				
26.5	19.6 (2.0)	39.2 (4.0)	405.1 (41.3)	1220.1 (124.5)	8.4	UCMSC	65	50



Order

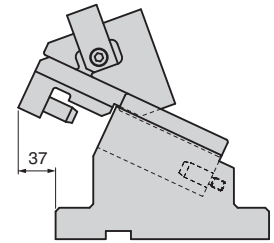
Catalog No. (W) - (θ)  
UCMSC 65 - 50



Option

Option Code	Specification
K	Dedicated key is attached. (It is not assembled to the main unit.)
SC	The mount surface is extended forward in the range of 1 to 60 mm (in increments of 1 mm).

Space for removing



Order

UCMSC65 - 50 - SC30 - K



For machining details or tapping hole and dowel hole (prepared hole and finished hole) for mounting of the retainer, refer to page 551. For detailed specification of the key, refer to page 726.



When the slider interferes with the die due to the protrusion length, you will need to machine the die for clearance.

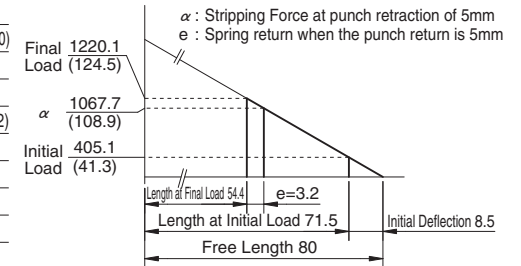
Table of Components

No.	Description	Qty	Material and Remark
①	Cam Holder	1	FCD450
②	Cam Slider	1	FC250
③	Cam Driver	1	FC250
④	Slide Plate	2	S45C Copper Powder Sintered(#220)
⑤	Positive Return A	1	S45C(1045)
⑥	Positive Return B	1	S45C(1045)
⑦	Cam Slide Guide	1	Bronze with Graphite(SO#50SP2)
⑧	Stopper Plate	1	SS400(1020)
⑨	Spring Guide Pin	2	SCM435
⑩	Safety Plate	1	SS400(1020)
⑪	Coil Spring	1	TM25-80
⑫	Stopper	2	Urethane
⑬	Dowel Pin with Female Thread	2	SUJ2 φ8×30
⑭	Coned Disc Spring	2	For M6
⑮	Hexagon Socket Brazier Head Bolt	6	SCM435 LCS8-18
⑯	Hexagon Socket Head Bolt	2	SCM435 M6×10
⑰	Hexagon Socket Head Bolt	2	SCM435 M10×30
⑱	Hexagon Socket Head Bolt	2	SCM435 M8×16

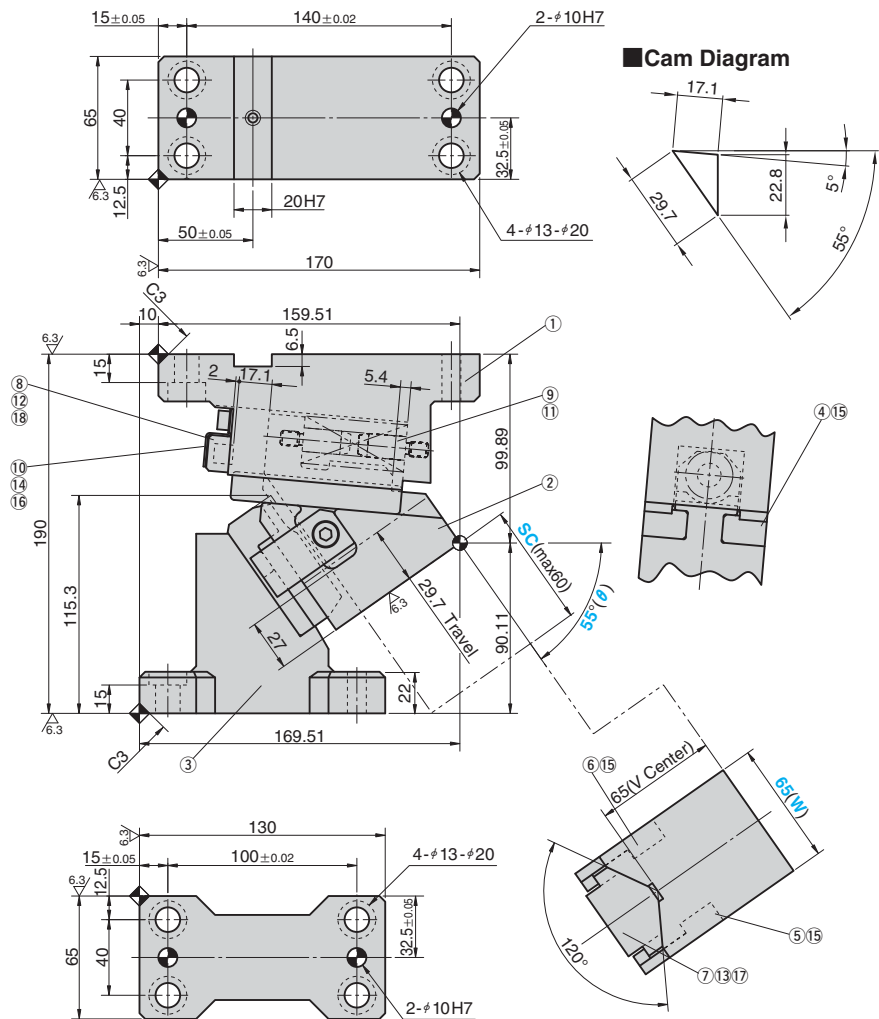
Spring Diagram

(Stripping Force at punch retraction of 5mm)

- Spring Used TM25-80(1 Piece)
- Spring Constant 47.66N/mm(4.86kgf/mm)



UCMSC65 - 55



Travel S	Working Force kN(tonf)		Spring Force N(kgf)		Total Weight kg	Catalog No.	(W)	(θ)
	Standard Working Force (one million strokes)	Allowable Working Force (300,000 strokes)	Initial Load	Final Load				
29.7	19.6 (2.0)	39.2 (4.0)	405.1 (41.3)	1220.1 (124.5)	8.4	UCMSC	65	55



Order

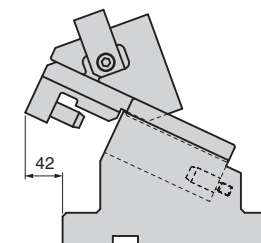
Catalog No. (W) - (θ)  
UCMSC 65 - 55



Option

Option Code	Specification
K	Dedicated key is attached. (It is not assembled to the main unit.)
SC	The mount surface is extended forward in the range of 1 to 60 mm (in increments of 1 mm).

Space for removing



Order

UCMSC65 - 55 - SC30 - K



For machining details or tapping hole and dowel hole (prepared hole and finished hole) for mounting of the retainer, refer to page 551. For detailed specification of the key, refer to page 726.



When the slider interferes with the die due to the protrusion length, you will need to machine the die for clearance.

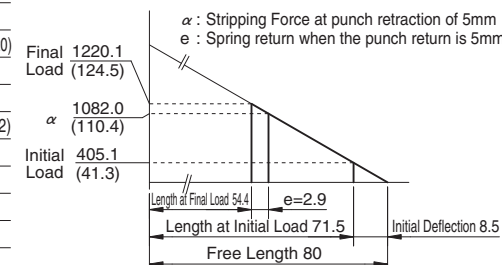
Table of Components

No.	Description	Qty	Material and Remark
①	Cam Holder	1	FCD450
②	Cam Slider	1	FC250
③	Cam Driver	1	FC250
④	Slide Plate	2	S45C Copper Powder Sintered(#220)
⑤	Positive Return A	1	S45C(1045)
⑥	Positive Return B	1	S45C(1045)
⑦	Cam Slide Guide	1	Bronze with Graphite(SO#50SP2)
⑧	Stopper Plate	1	SS400(1020)
⑨	Spring Guide Pin	2	SCM435
⑩	Safety Plate	1	SS400(1020)
⑪	Coil Spring	1	TM25-80
⑫	Stopper	2	Urethane
⑬	Dowel Pin with Female Thread	2	SUJ2 #8×30
⑭	Coned Disc Spring	2	For M6
⑮	Hexagon Socket Brazier Head Bolt	6	SCM435 LCS8-18
⑯	Hexagon Socket Head Bolt	2	SCM435 M6×10
⑰	Hexagon Socket Head Bolt	2	SCM435 M10×30
⑱	Hexagon Socket Head Bolt	2	SCM435 M8×16

Spring Diagram

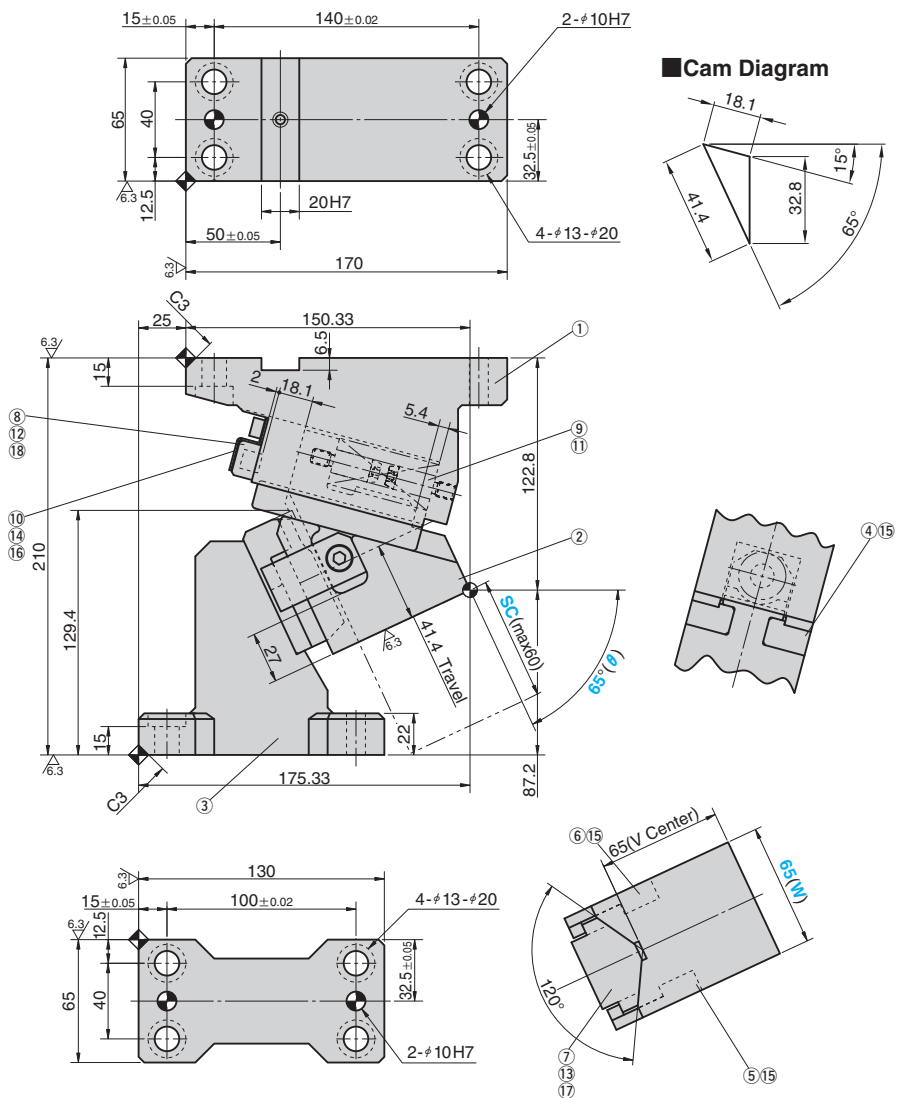
(Stripping Force at punch retraction of 5mm)

- Spring Used TM25-80(1 Piece)
- Spring Constant 47.66N/mm(4.86kgf/mm)





UCMSC65 - 65



Travel S	Working Force kN(tonf)		Spring Force N(kgf)		Total Weight kg	Catalog No.	(W)	(θ)
	Standard Working Force (one million strokes)	Allowable Working Force (300,000 strokes)	Initial Load	Final Load				
41.4	19.6 (2.0)	39.2 (4.0)	357.5 (36.5)	1220.1 (124.5)	9.3	UCMSC	65	65

Order **Catalog No.** **(W)** - **(θ)**  
**UCMSC 65 - 65**

Option

Option Code	Specification
K	Dedicated key is attached. (It is not assembled to the main unit.)
SC	The mount surface is extended forward in the range of 1 to 60 mm (in increments of 1 mm).

Order **UCMSC65 - 65 - SC30 - K**

For machining details or tapping hole and dowel hole (prepared hole and finished hole) for mounting of the retainer, refer to page 551. For detailed specification of the key, refer to page 726.

When the slider interferes with the die due to the protrusion length, you will need to machine the die for clearance.

Space for removing

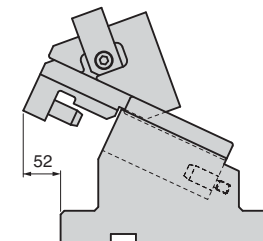


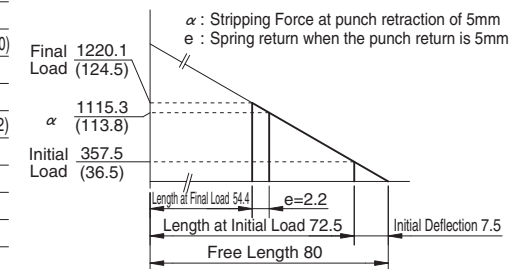
Table of Components

No.	Description	Qty	Material and Remark
①	Cam Holder	1	FCD450
②	Cam Slider	1	FC250
③	Cam Driver	1	FC250
④	Slide Plate	2	S45C Copper Powder Sintered(#220)
⑤	Positive Return A	1	S45C(1045)
⑥	Positive Return B	1	S45C(1045)
⑦	Cam Slide Guide	1	Bronze with Graphite(SO#50SP2)
⑧	Stopper Plate	1	SS400(1020)
⑨	Spring Guide Pin	2	SCM435
⑩	Safety Plate	1	SS400(1020)
⑪	Coil Spring	1	TM25-80
⑫	Stopper	2	Urethane
⑬	Dowel Pin with Female Thread	2	SUJ2 φ8×30
⑭	Coned Disc Spring	2	For M6
⑮	Hexagon Socket Brazier Head Bolt	6	SCM435 LCS8-18
⑯	Hexagon Socket Head Bolt	2	SCM435 M6×10
⑰	Hexagon Socket Head Bolt	2	SCM435 M10×30
⑱	Hexagon Socket Head Bolt	2	SCM435 M8×16

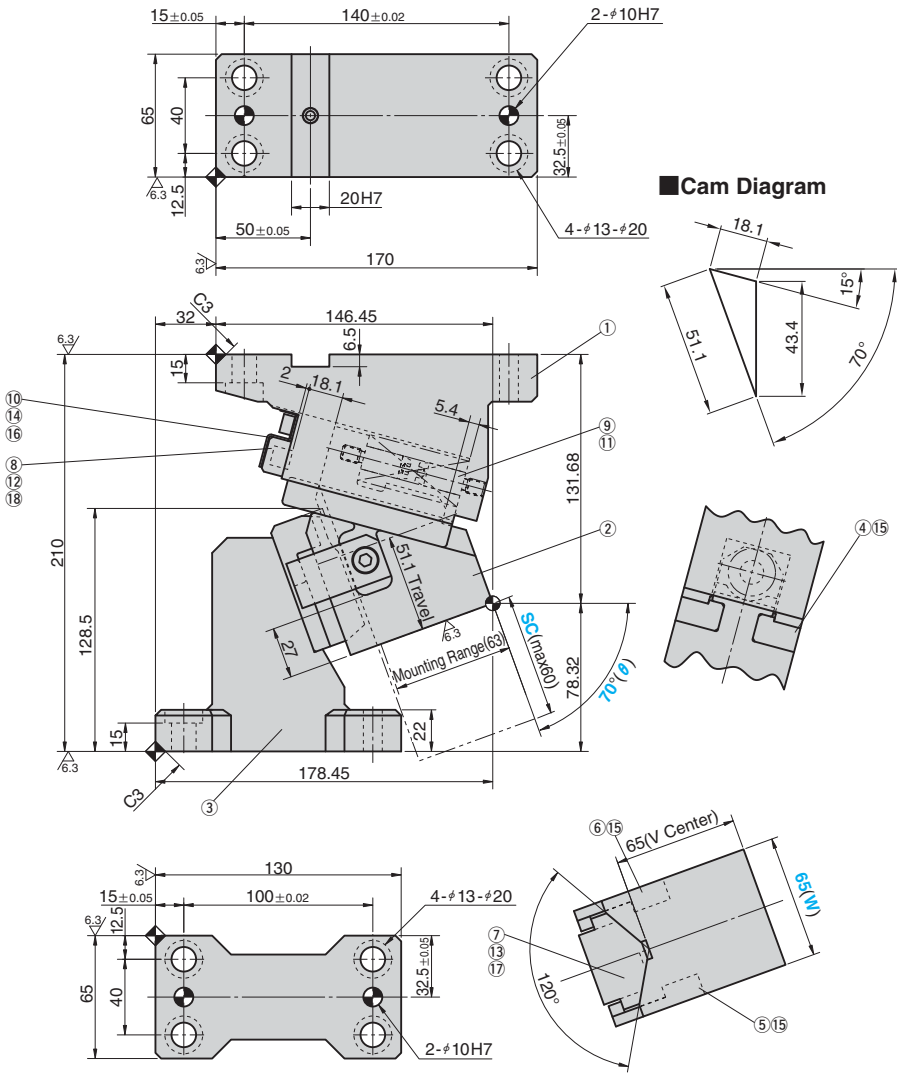
Spring Diagram

(Stripping Force at punch retraction of 5mm)

- Spring Used TM25-80(1 Piece)
- Spring Constant 447.66N/mm(4.86kgf/mm)



UCMSC65 - 70



Cam Diagram

Travel S	Working Force kN(tonf)		Spring Force N(kgf)		Total Weight kg	Catalog No.	(W)	(θ)
	Standard Working Force (one million strokes)	Allowable Working Force (300,000 strokes)	Initial Load	Final Load				
51.1	19.6 (2.0)	39.2 (4.0)	357.5 (36.5)	1220.1 (124.5)	9.5	UCMSC	65	70



Order

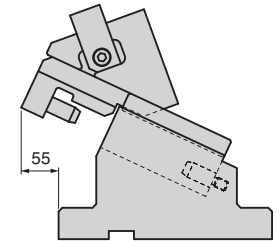
Catalog No. (W) - (θ)  
UCMSC 65 - 70



Option

Option Code	Specification
K	Dedicated key is attached. (It is not assembled to the main unit.)
SC	The mount surface is extended forward in the range of 1 to 60 mm (in increments of 1 mm).

Space for removing



Order UCMSC65 - 70 - SC30 - K

For machining details or tapping hole and dowel hole (prepared hole and finished hole) for mounting of the retainer, refer to page 551. For detailed specification of the key, refer to page 726.

When the slider interferes with the die due to the protrusion length, you will need to machine the die for clearance.

Table of Components

No.	Description	Qty	Material and Remark
①	Cam Holder	1	FCD450
②	Cam Slider	1	FC250
③	Cam Driver	1	FC250
④	Slide Plate	2	S45C Copper Powder Sintered(#220)
⑤	Positive Return A	1	S45C(1045)
⑥	Positive Return B	1	S45C(1045)
⑦	Cam Slide Guide	1	Bronze with Graphite(SO#50SP2)
⑧	Stopper Plate	1	SS400(1020)
⑨	Spring Guide Pin	2	SCM435
⑩	Safety Plate	1	SS400(1020)
⑪	Coil Spring	1	TM25-80
⑫	Stopper	2	Urethane
⑬	Dowel Pin with Female Thread	2	SUJ2 #8×30
⑭	Coned Disc Spring	2	For M6
⑮	Hexagon Socket Brazier Head Bolt	6	SCM435 LCS8-18
⑯	Hexagon Socket Head Bolt	2	SCM435 M6×10
⑰	Hexagon Socket Head Bolt	2	SCM435 M10×30
⑱	Hexagon Socket Head Bolt	2	SCM435 M8×16

Spring Diagram

(Stripping Force at punch retraction of 5mm)

- Spring Used TM25-80(1 Piece)
- Spring Constant 47.66N/mm(4.86kgf/mm)

