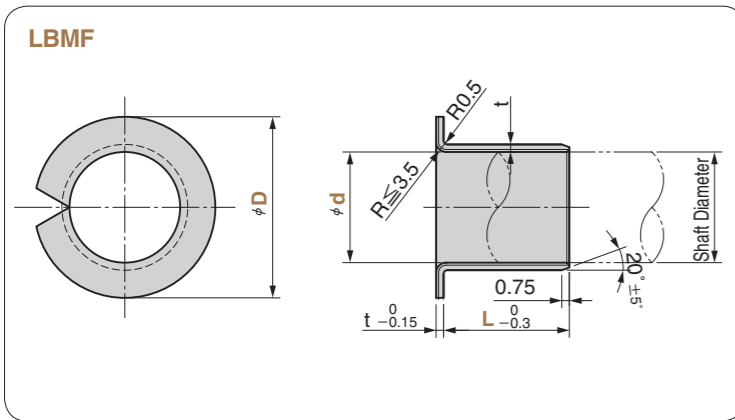


Oilless Bush

Drystar Lead Free • Flange Type

SO#936FR

RoHS Lead Free



Order **Catalog No.** **d** - **D** - **L**
LBMF 50 - 65 - 40

Operation Range

Lubricating Condition	Max. Allowable Load P N/mm ²				Operation Range Temperature °C
	Very Slow Movement	Rotation, Oscillation or Sliding	Change of Load 100,000 Times or Less	Change of Load 10 Million Times or More	
No lubrication	147	59	29	15	-200~+280

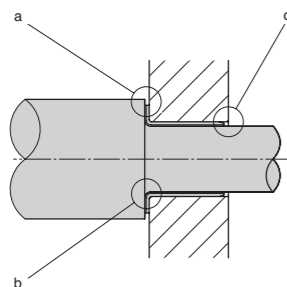
Physical Properties

Compression Strength Mpa	Linear Expansion Coefficient ×10 ⁻⁶ /°C		Thermal Conductivity W/(m·K)
	Parallel to Bearing Surface	Vertical to Bearing Surface	
304	11	30	42

Housing		Shaft		Dimension of Bushing				Catalog No.	d	D	L		
I.D.	H7	O.D.	Tolerance	Tolerance I.D. after press-fit	O.D.	Tolerance	Thickness t					Tolerance	
50	+0.025 0	45	-0.025 -0.050	45	+0.105 0	50	+0.115 +0.075	2.5	0 -0.040	LBMF	50	60	20
													25
													30
													40
													50
55	+0.030 0	55	-0.025 -0.055	55	+0.110 0	60	+0.145 +0.095	2.5	0 -0.040	LBMF	50	65	30
													40
													30
60	+0.030 0	60	-0.025 -0.055	60	+0.110 0	65	+0.145 +0.095	2.5	0 -0.040	LBMF	50	70	30
													40
65	+0.030 0	65	-0.025 -0.055	65	+0.110 0	70	+0.145 +0.095	2.5	0 -0.040	LBMF	50	75	30
													40

⚠ Tolerance I.D. after press-fit is applicable to used as reference.

Caution in Using Flange Bush



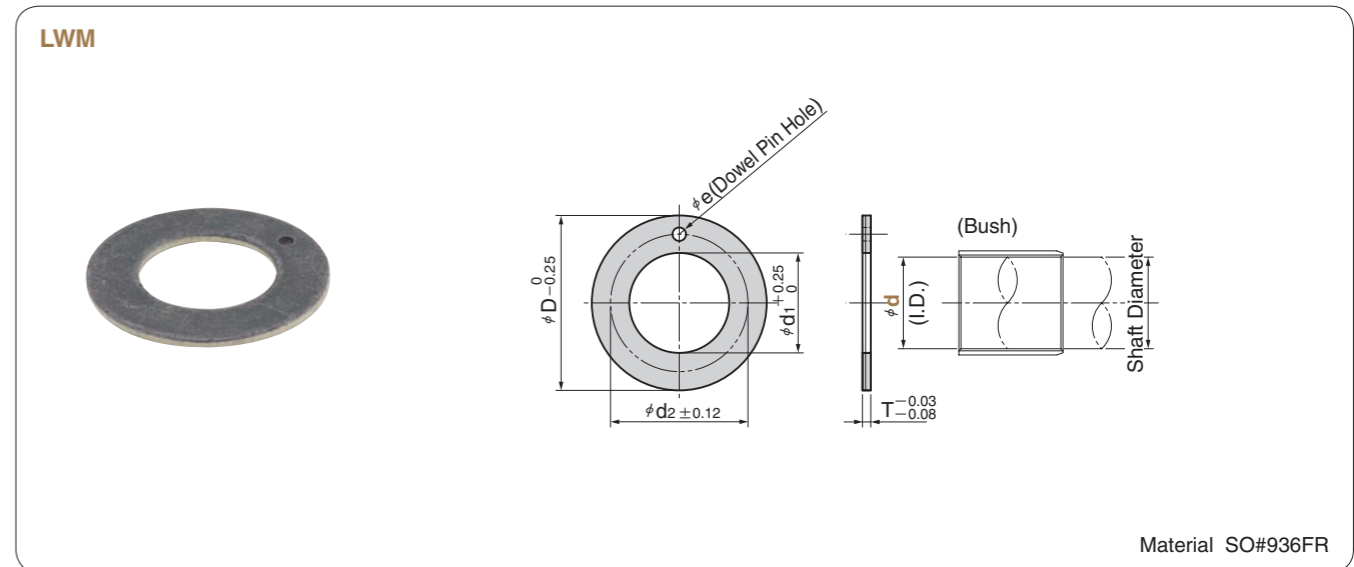
- Make the shaft outer diameter larger than the flange outer diameter. In press fit, make the arbor diameter larger than the flange outer diameter.
- Chamfer on the shaft is 1R.
- Keep the bushing end inside the housing end.

Oilless Washer

Drystar Lead Free Type

SO#936FR

RoHS Lead Free



Material SO#936FR

Bush I.D. #d	d ₁	D	T Thickness	d ₂	e	Housing Depth	Catalog No.	d
6	8	16	1.5	12	1.300	1.20 ~0.95	LWM	06
8	10	18		14	~1.100			
10	12	24		18	1.875 ~1.625			
12	14	26		20	2.375 ~2.125			
14	16	30		23				
16	18	32		25	4.375 ~4.125			
18	20	36		28				
20	22	38		30	3.375 ~3.125			1.70 ~1.45
22	24	42		33				
24	26	44		35	2.0			
25	28	48	38					
30	32	54	43	2.0				
35	38	62	50					
40	42	66	54	2.0				
45	48	74	61					
50	52	78	65	2.0				

Order **Catalog No.** **d**
LWM 30

For Operation

- When a dowel pin is used for retention. Provide a step down on housing. Make step down dia larger by 0.05 to 0.15 mm. than thrust washer O.D. Make dowel pin top lower by 0.3 to 0.5 mm than washer face.
- When adhesive is used for retention. Adhesives can be used for thrust washer retention but in this case take the max.usable temperature and running condition into consideration for adhesive selection.

