

Oilless Slide Guide Bronze L-Shaped Type

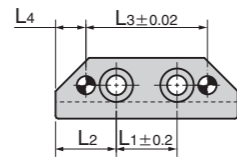
SO#50SP2

RoHS

SGLXS

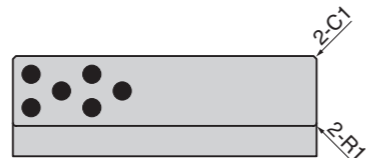
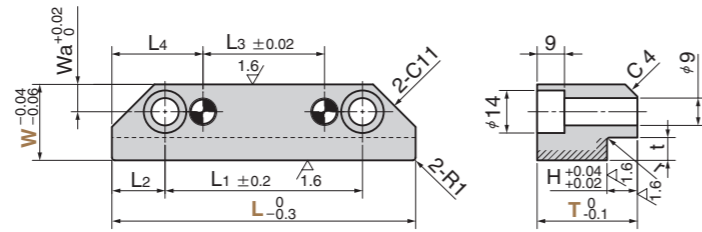


• L=60

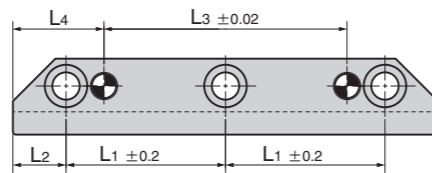


●Dowel Pin Hole
 W=20 $\phi 6 \begin{matrix} +0.012 \\ 0 \end{matrix}$
 W=25·30 $\phi 8 \begin{matrix} +0.015 \\ 0 \end{matrix}$

• L=80~100



• L=120~200



⚠ When the product is used at high temperature (150°C or more), the embedding specification of solid lubricant is different. Please contact us for details.

Material Base Bronze with Graphite(SP2)
 Hatched area solid lubricant(GR-1)

Wa	L1	L2	L3	L4	H	t	r	Catalog No.	W	L	T
	20	20	40	10						60	
	50		20							80	
	70		40							100	23
	45	15	60		8	5.5	0.5		20	120	28
	55		80							140	
	65		100							160	
9	45		20	30						80	
	65		40							100	
	42.5		60							120	28
	52.5	17.5	80		10	7.5		SGLXS	25	140	33
	62.5		100							160	43
	72.5		120							180	
	82.5		140				0.8			200	
	60		20							100	
	40		40							120	
11	50	20	60	40	15	11			30	140	43
	60		80							160	53
	70		100							180	
	80		120							200	

Order Catalog No. W - L - T
 SGLXS 20 - 120 - 28

■ We are ready to accept requests or orders for special parts.

Oilless Slide Guide Bronze L-Shaped Blank Type

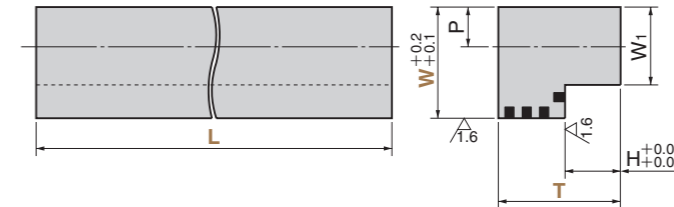
SO#50SP2

RoHS

SGLX



⚠ When the product is used at high temperature (150°C or more), the embedding specification of solid lubricant is different. Please contact us for details.



Material Base Bronze with Graphite(SP2)
 Solid lubricant(GR-1)

W1	H	Recommended Mounting Hole		Catalog No.	W	L	T
		P	Size				
							15
	5						20
14.5		8			20	320	25
	8						23
			M8				28
17.5	10				25		33
		10		SGLX			43
					30		43
19	15					320	53
						605	43
23		12	M10		35		53
							63
	20						45
28		14	M12		40		55
							65

Order Catalog No. W - L - T
 SGLX 20 - 320 - 20

■ Operation Range(SO#50 SP2)

Lubricant Type	Lubricating Condition	Environment Condition	Max. Allowable Load P N/mm ²	Max. Allowable Sliding Speed V m/min	Max. Allowable PV value N/mm ² ·m/min	Operation Range Temperature °C
GR-1	No lubrication	Atmosphere	100	15	150	-50~+300
	Regular lubrication(Grease)			30		200

■ Physical Properties(SO#50SP2)

Specific Gravity g/cm ³	Hardness HB	Elongation %	Tensile Strength N/mm ²	Linear Expansion Coefficient ×10 ⁻⁵ /°C
7.9	210 or more	12 or more	755 or more	1.9

■ We are ready to accept requests or orders for special parts.