

Oiless Slide Plate

Bronze Type Thickness 5mm

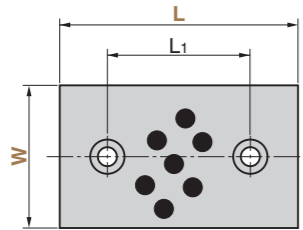
SO#50SP2

RoHS

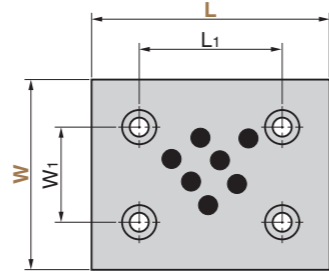
UWP



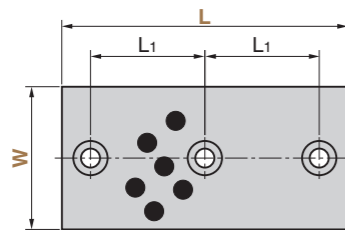
● W=18~38, L=50~100
W=48, L=75~125



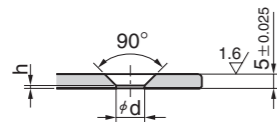
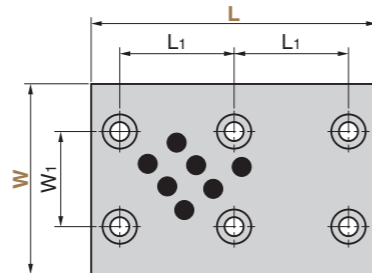
● W=75, L=75~125
W=100, L=100~125



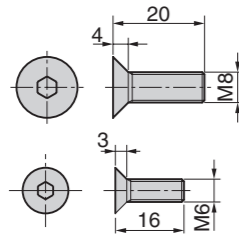
● W=18~48, L=150



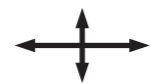
● W=75~100, L=150



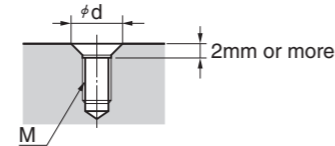
● Flat Head Bolt



● Sliding Direction



⚠ When tapped holes for mounting are drilled on the mating part, chamfer corners as shown below.



• $d \geq M + 4\text{mm}$
Material Base Bronze with Graphite(SP2)
Solid lubricant(GR-1)
Accessory Flat Head Bolt

Operation Range

Lubricant Type	Lubricating Condition	Environment Condition	Max. Allowable Load P N/mm ²	Max. Allowable Sliding Speed V m/min	Max. Allowable PV value N/mm ² · m/min	Operation Range Temperature °C
GR-1	No lubrication	Atmosphere	100	15	150	-50 ~ +300
	Regular lubrication(Grease)			30	200	-50 ~ +150

Physical Properties

Specific Gravity g/cm ³	Hardness HB	Elongation %	Tensile Strength N/mm ²	Linear Expansion Coefficient ×10 ⁻⁵ /°C
7.9	210 or more	12 or more	755 or more	1.9

W ₁	L ₁	d	h	Mounting Bolt	Catalog No.	W	L
—	20	6.5	1.5	M6		18	50
	45						75
	70						100
—	60				UWP		150
	20						50
	45						75
—	70				UWP		100
	60						150
	45						75
—	70	10	0.8	M8		48	100
	95						125
	60						150
45	45					75	75
	70						100
	95						125
70	60						150
	70						100
	95						125
70	60						100
	95						125
	60						150

Order **Catalog No.** **W** - **L**
UWP 38 - 50

⚠ When the product is used at high temperature (150°C or more), the embedding specification of solid lubricant is different. Please contact us for details.

■ We are ready to accept requests or orders for special parts.