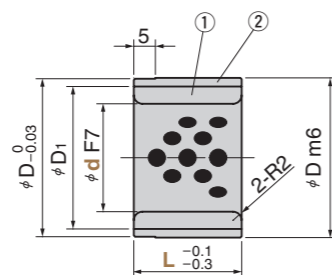


# Insulated Bushings Bronze Type SO#50SP2

RoHS

IB



● Sliding Direction



Material ①Base Bronze with Graphite(SP2)  
Solid lubricant(GR-1)  
②Insulation(SO#25-61N)

⚠ Operation range temperature is  $-40 \sim +100^{\circ}\text{C}$

d	F7	D m6	D <sub>1</sub>	Catalog No.	d	L
16	+0.034 +0.016	28	+0.021 +0.008		16	20
25		37			25	16
	+0.041 +0.020		+0.025 +0.009	IB	20	
30		42			30	20
			37		17	
35	+0.050 +0.025	52	+0.030 +0.011		35	20

Order Catalog No. **IB** d **25** - L **16**

### Operation Range (Bronze Bushing)

Lubricant Type	Lubricating Condition	Environment Condition	Max. Allowable Load P N/mm <sup>2</sup>	Max. Allowable Sliding Speed V m/min	Max. Allowable PV value N/mm <sup>2</sup> · m/min	Operation Range Temperature °C
GR-1	No lubrication	Atmosphere	100	15	150	-50 ~ +300
	Regular lubrication(Grease)			30	200	-50 ~ +150

⚠ The operation temperature range of insulator (②) is  $-40$  to  $+100^{\circ}\text{C}$ .

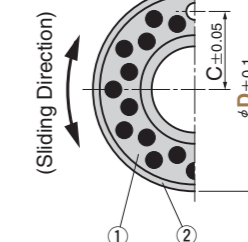
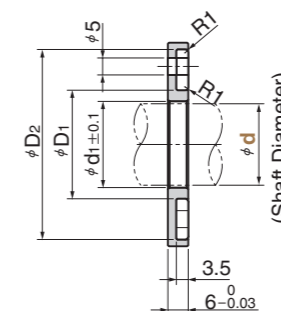
### Physical Properties (Bronze Bushing)

Specific Gravity g/cm <sup>3</sup>	Hardness HB	Elongation %	Tensile Strength N/mm <sup>2</sup>	Linear Expansion Coefficient $\times 10^{-5}/^{\circ}\text{C}$
7.9	210 or more	12 or more	755 or more	1.9

# Insulated Washers Bronze Type SO#50SP2

RoHS

IW



■ Located Pin  
ZWP



Material ①Base Bronze with Graphite(SP2)  
Solid lubricant(GR-1)  
②Insulation(SO#25-61N)

⚠ Operation range temperature is  $-40 \sim +100^{\circ}\text{C}$

d <sub>1</sub>	D <sub>1</sub>	D <sub>2</sub>	C	Catalog No.	d	D
25.4	35	62	26		25	70
30.4	40	62	27	IW	30	70
	40	80	31		30	90

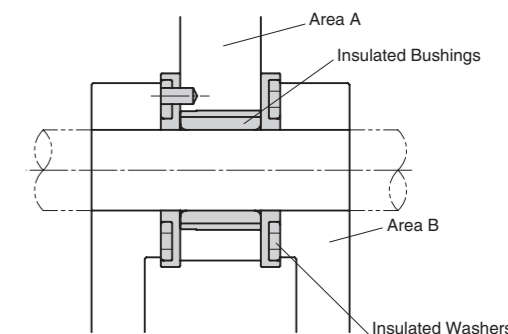
Order Catalog No. **IW** d **30** - D **70**

### Located Pin

Catalog No.	D	L
		5
ZWP	5	10
		12

Order Catalog No. **ZWP** D **5** - L **5**

EX Example



(Part of welding gun)  
• Area A is electrically separated from area B.