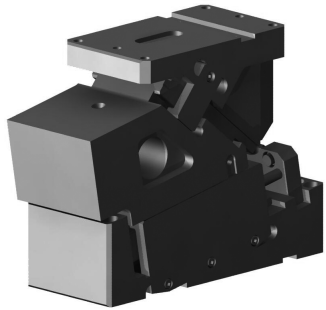


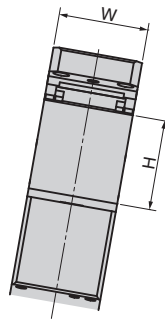
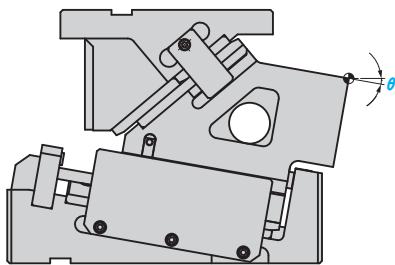
Die Mounted Cam Unit

General Description of SVSC

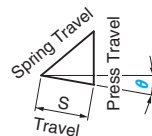


- SVSC complies with the VDI-BAK specification.
 - Specification of Guide Plate complies with VDI3357.
 - Specification of Gas Spring complies with VDI3003.
- Automatic alignment is provided by V-shaped guides.
- 50, 85, 110, 150, 220, 330 and 400 mount widths are available.
- Available angle are 0° to 20° in increments of 5°.
- Designed to facilitate easy removal of gas spring. (Disassembly of cam is unnecessary)
- Heavy duty type : high working force / return force.

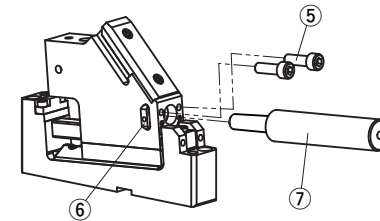
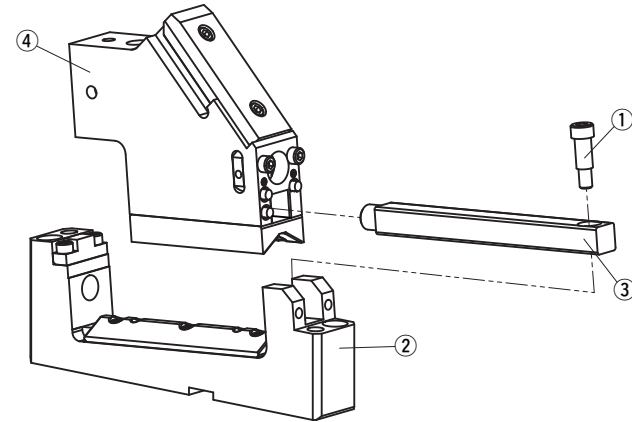
SVSC Specifications



Cam Diagram



SVSC50/85 Structure and Assembly / Disassembly



- Note) Only spring can be removed.
- 1) Remove hexagon socket head bolt(⑤).
 - 2) Pull out the spring stopper(⑥).
 - 3) Pull out the gas spring(⑦).

Disassembly method of SVSC50/85

- 1) Remove hexagon socket head bolt(①) and pull guide bar(③) from cam holder(②) 20mm to the rear. Remove the guide bar and cam slider(③④).
- 2) Pull and remove the guide bar from the cam slider.

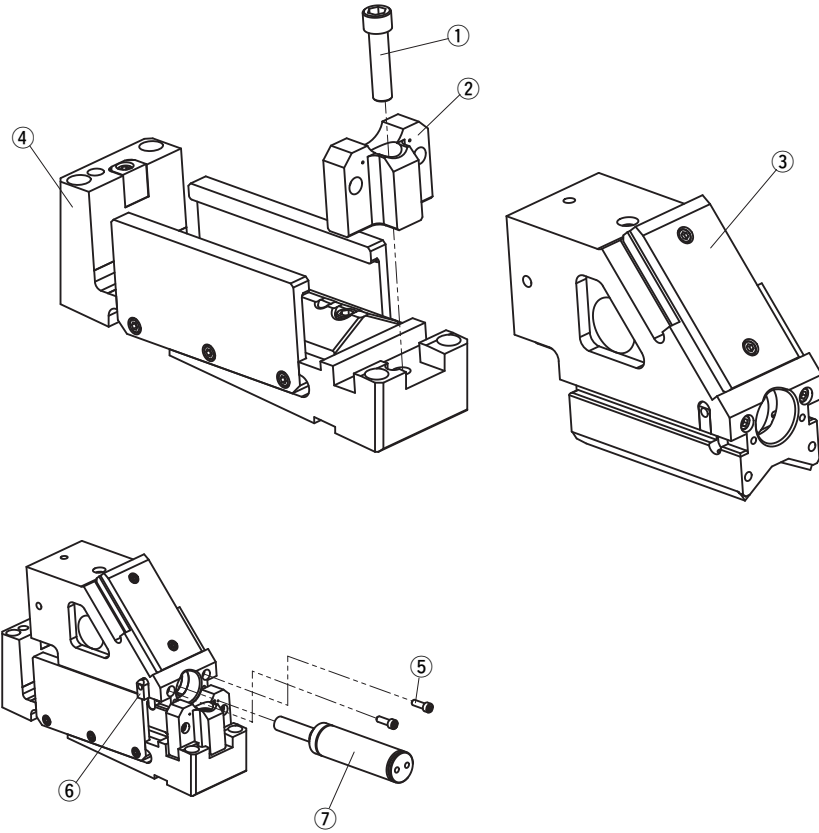
Assembly method of SVSC50/85

- 1) Assemble components in the reverse order of disassembly.
 - Make sure that there is no foreign material on the sliding area and assemble components.
 - The clearance between the guide bar / cam slider and the cam holder is adjusted. Match the stamped serial number on the holder and slider before assembly.
 - After reassembling, please ensure that all bolts removed are re-installed and tightened.

Mount Surface		Working Angle θ	Travel S	Working Force kN(tonf)		Spring Force kN*(kgf)	
W	H			Standard Working Force (one million strokes)	Initial Load	Final Load	
50	75		55	29.4(3.0)	2.00(204)	2.27(231)	
85	85			58.8(6.0)	2.65(270)	3.50(357)	
110		00		117.7(12.0)	4.70(479)	6.70(683)	
150	110	05	70	166.7(17.0)	7.40(755)	12.00(1,224)	
220		10		245.2(25.0)	9.40(959)	13.40(1,366)	
330		15		343.2(35.0)	14.80(1,509)	22.00(2,243)	
400	180	20	80	431.5(44.0)	14.80(1,509)	22.00(2,243)	

* Final Load is for Kaller Gas Spring.

■ SVSC110/150/220/330/400 Structure and Assembly / Disassembly



● Disassembly method of SVSC110/150/220/330/400

- 1) Remove hexagon socket head bolt(①) and remove stopper plate(②).
- 2) Pull and remove the cam slider(③) from the cam holder(④) to the rear.

● Assembly method of SVSC110/150/220/330/400

- 1) Assemble components in the reverse order of disassembly.
 - Make sure that there is no foreign material on the sliding area and assemble components.
 - The clearance between the guide bar / cam slider and the cam holder is adjusted. Match the stamped serial number on the holder and slider before assembly.

Note) Only spring can be removed.

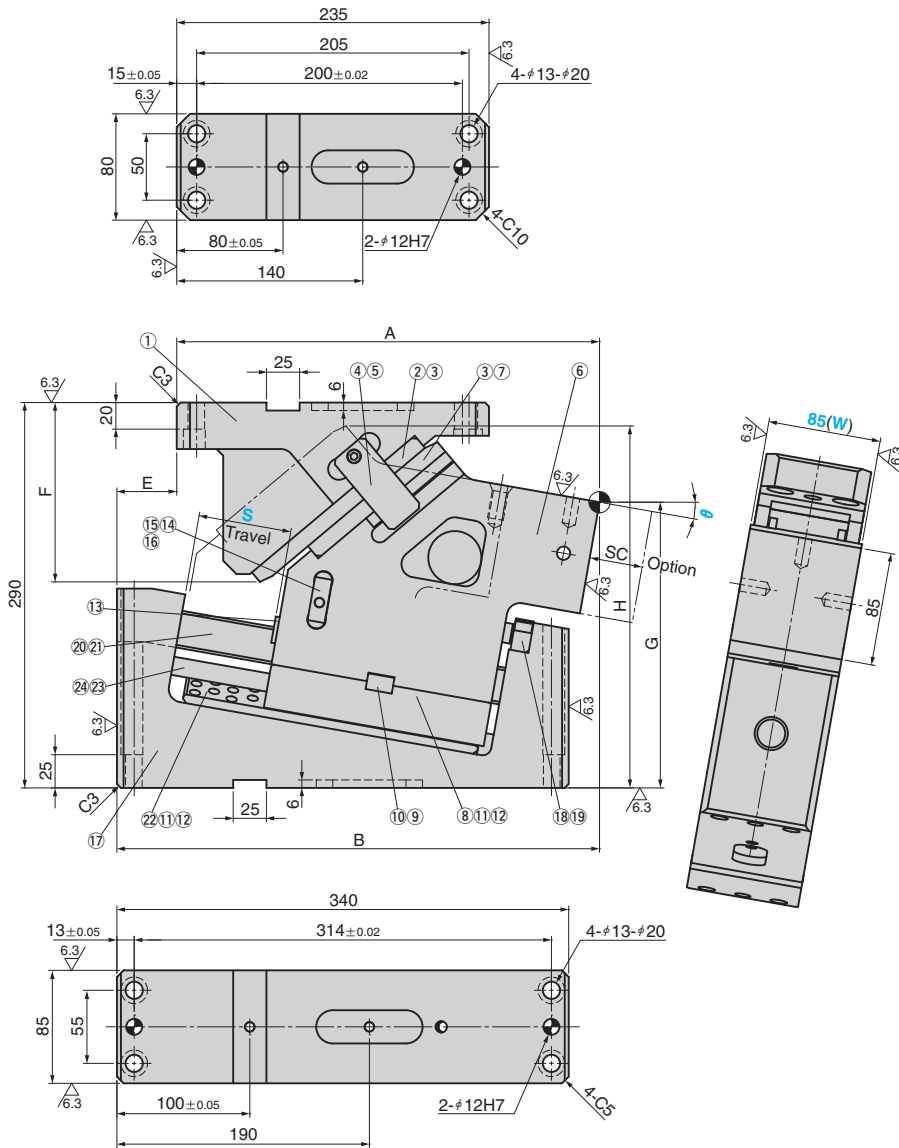
- 1) Remove hexagon socket head bolt(⑤).
- 2) Pull out the spring stopper(⑥).
- 3) Pull out the gas spring(⑦).



Die Mounted Cam Unit svsc85

FOR PIERCE

SVSC85 (00°~20°)



θ	A	B	E	F	G	H
00	325	340	15	158.4	235	258.4
05	324.32	354.32	30	146.6	225.4	265.9
10	318.2	363.2	45	134.9	215.01	272.4
15	316.58	371.58	55	122.6	204.86	278.7
20	309.39	379.39	70	109.6	195.01	284.7

kN(tonf) Standard Working Force (one million strokes)	Cam Slider Weight kg	Total Weight kg	Catalog No.	(W)	θ	Travel S	Spring Type PS
58.8 (6.0)	18.8	44.6	SVSC	85	00	70	GK GS NGP* GD
		44.8			05		
		45.1			10		
		45.9			15		
		46.8			20		



Order **Catalog No.** **W** - **θ** - **S** - **PS**
SVSC 85 - 10 - 70 - GK

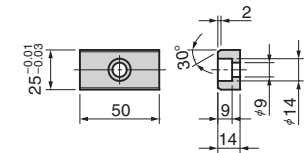
* Without gas spring but accessories for installation are included.

Spring Specification(Qty 1)

Spring Type PS	Spring Force kN			Gas Spring Catalog No.
	FA	FE	FAP	
GK	2.65	3.50	3.39	TU250-80 (KALLER)
GS	2.50	3.49	3.37	SPF250-80 (SANKYO)
GD	2.96	4.00	3.87	90.3.00300-080(DADCO)

Key Specification(Option)

(Qty 4 with M8×15 bolt)



* Power gas spring available. Please contact us for details.



Option Code	Specification
K	Dedicated key is attached. (It is not assembled to the main unit)
SC	The mount surface is extended forward in the range of 1 to 40 mm. (in increments of 1 mm)
NF	Nitrogen gas is not charged. Applicable to GK,GS and GD only.

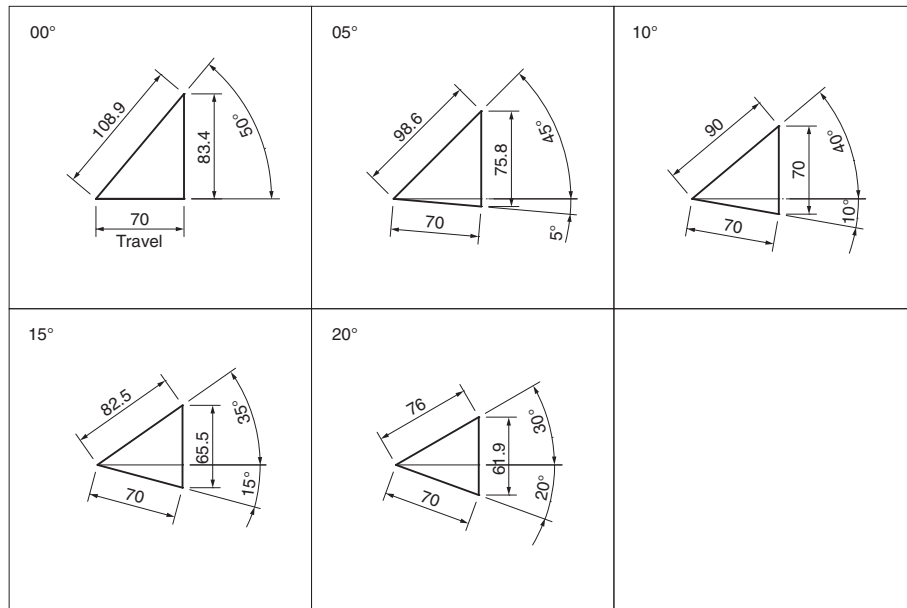


Order **SVSC85 - 10 - 70 - GK - NF - SC20**

Die Mounted Cam Unit svsc85

FOR PIERCE

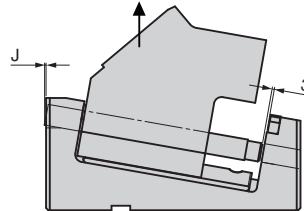
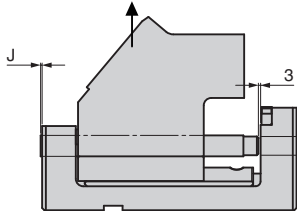
Cam Diagram



Required space for removing

Working Angle 00°

Working Angle 05°~20°



*No space for removing backward required

Working Angle	J
00°	3.0
05°	0.6
10°	1.9
15°	1.0
20°	-2.3

Table of Components

No.	Description	Qty	Material and Remark	No.	Description	Qty	Material and Remark
①	Cam Driver	1	GGG60(FCD600)	⑬	Stopper	2	Urethane(PCU20)
②	Slide Plate	1	Bronze With Graphite(VSM-29-SP2)	⑭	Spring Stopper	2	S45C
③	Hexagon Socket Head Bolt	4	SCM435(M8×15)	⑮	Hexagon Socket Head Bolt	2	SCM435 M8×25
④	Cam Positive Return	2	S45C HRC28~	⑯	Screw Plug with Nose	2	SCM435 (M6×12)
⑤	Hexagon Socket Head Bolt	2	SCM435(M6×20)	⑰	Cam Holder	1	GGG60(FCD600)
⑥	Cam Slider	1	GGG60(FCD600)	⑱	Spring Block	1	S45C HRC55~
⑦	Slide Plate	1	SCM440(VSM-58-ST01)	⑲	Hexagon Socket Head Bolt	2	SCM435(M8×30)
⑧	Cam Slide Guide(Upper)	1	S45C with Graphite HRC55~	⑳	Guide Bar	1	SCM440
⑨	Key	2	S45C	㉑	Shoulder Bolt	1	SCM435
⑩	Dowel Pin with Female Thread	2	SUJ2 (φ6-20)	㉒	Cam Slide Guide(Lower)	1	Bronze With Graphite
⑪	Hexagon Socket Head Bolt	7	SCM435 (M10×30)	㉓	Lock Spacer	2	SS400
⑫	Dowel Pin with Female Thread	4	SUJ2 (φ10-30)	㉔	Hexagon Socket Head Bolt	2	SCM435 M8×100

