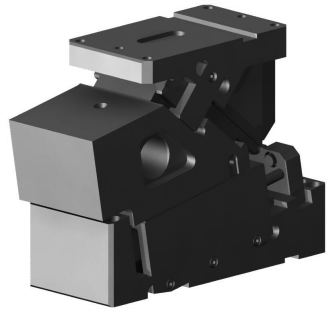


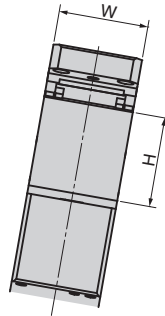
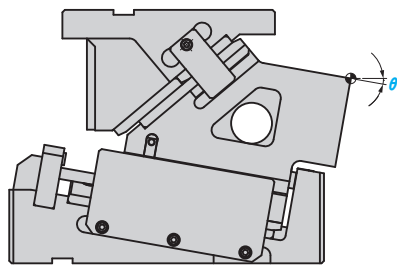
# Die Mounted Cam Unit

## General Description of SVSC

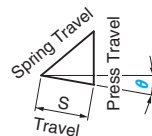


- SVSC complies with the VDI-BAK specification.
  - Specification of Guide Plate complies with VDI3357.
  - Specification of Gas Spring complies with VDI3003.
- Automatic alignment is provided by V-shaped guides.
- 50, 85, 110, 150, 220, 330 and 400 mount widths are available.
- Available angle are 0° to 20° in increments of 5°.
- Designed to facilitate easy removal of gas spring. (Disassembly of cam is unnecessary)
- Heavy duty type : high working force / return force.

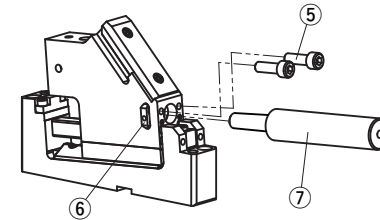
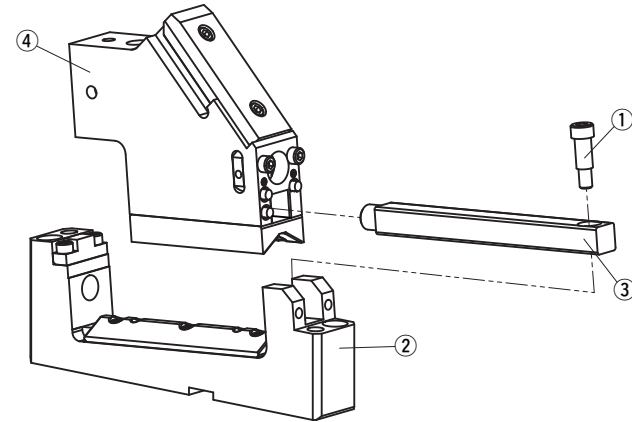
### SVSC Specifications



### Cam Diagram



### SVSC50/85 Structure and Assembly / Disassembly



- Note) Only spring can be removed.
- 1) Remove hexagon socket head bolt(⑤).
  - 2) Pull out the spring stopper(⑥).
  - 3) Pull out the gas spring(⑦).

### Disassembly method of SVSC50/85

- 1) Remove hexagon socket head bolt(①) and pull guide bar(③) from cam holder(②) 20mm to the rear. Remove the guide bar and cam slider(③④).
- 2) Pull and remove the guide bar from the cam slider.

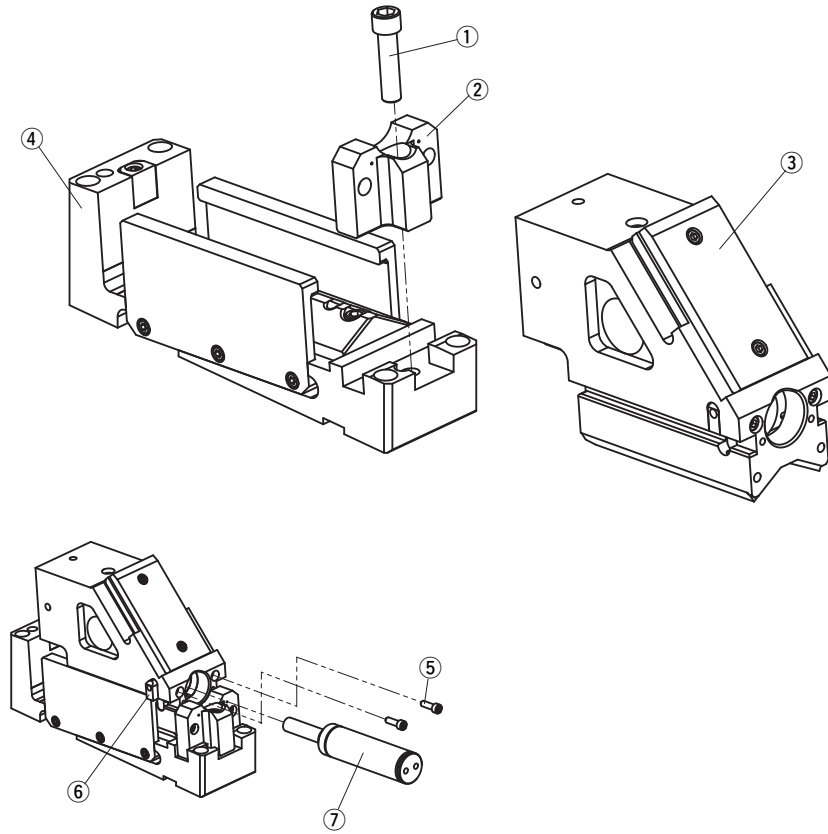
### Assembly method of SVSC50/85

- 1) Assemble components in the reverse order of disassembly.
  - Make sure that there is no foreign material on the sliding area and assemble components.
  - The clearance between the guide bar / cam slider and the cam holder is adjusted. Match the stamped serial number on the holder and slider before assembly.
  - After reassembling, please ensure that all bolts removed are re-installed and tightened.

Mount Surface		Working Angle $\theta$	Travel S	Working Force kN(tonf)		Spring Force kN*(kgf)	
W	H			Standard Working Force (one million strokes)	Initial Load	Final Load	
50	75		55	29.4(3.0)	2.00(204)	2.27(231)	
85	85			58.8(6.0)	2.65(270)	3.50(357)	
110		00		117.7(12.0)	4.70(479)	6.70(683)	
150	110	10	70	166.7(17.0)	7.40(755)	12.00(1,224)	
220		15		245.2(25.0)	9.40(959)	13.40(1,366)	
330		20		343.2(35.0)	14.80(1,509)	22.00(2,243)	
400	180		80	431.5(44.0)	14.80(1,509)	22.00(2,243)	

\* Final Load is for Kaller Gas Spring.

### ■ SVSC110/150/220/330/400 Structure and Assembly / Disassembly



#### ● Disassembly method of SVSC110/150/220/330/400

- 1) Remove hexagon socket head bolt(①) and remove stopper plate(②).
- 2) Pull and remove the cam slider(③) from the cam holder(④) to the rear.

#### ● Assembly method of SVSC110/150/220/330/400

- 1) Assemble components in the reverse order of disassembly.
  - Make sure that there is no foreign material on the sliding area and assemble components.
  - The clearance between the guide bar / cam slider and the cam holder is adjusted. Match the stamped serial number on the holder and slider before assembly.

Note) Only spring can be removed.

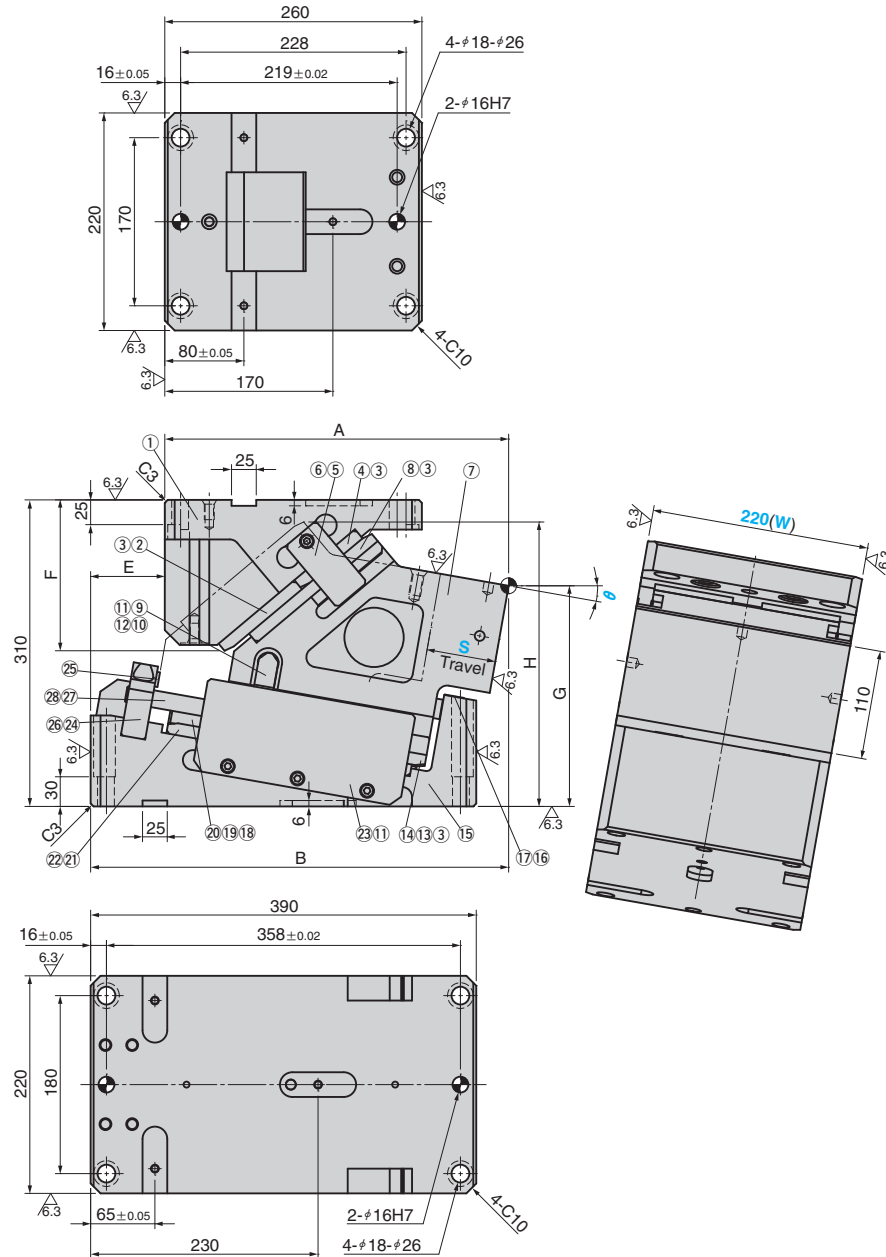
- 1) Remove hexagon socket head bolt(⑤).
- 2) Pull out the spring stopper(⑥).
- 3) Pull out the gas spring(⑦).



# Die Mounted Cam Unit svsc220

FOR PIERCE

SVSC220 (00°~20°)



$\theta$	A	B	E	F	G	H
00	355	390	35	177.6	247	274.5
05	356.59	406.59	50	165.9	234.56	280.7
10	347.76	422.76	75	152.6	223.13	287.6
15	348.41	433.41	85	138.6	211.75	294.1
20	346.46	443.46	97	124.3	200.47	300

kN(tonf) Standard Working Force (one million strokes)	Cam Slider Weight kg	Total Weight kg	Catalog No.	(W)	$\theta$	Travel S	Spring Type PS
245.2 (25.0)	60.3	139	SVSC	220	00	70	GK GS NGP* GD
		140			05		
		141			10		
		145			15		
		150			20		



Order **Catalog No.** (W) -  $\theta$  - S - PS  
SVSC 220 - 10 - 70 - GK

\* Without gas spring but accessories for installation are included.

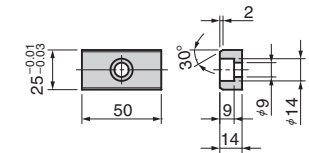
### Spring Specification(Qty 2)

Spring Type PS	Spring Force kN			Gas Spring Catalog No.
	FA	FE	FAP	
GK	9.40	13.40	12.90	TU500-80 (KALLER)
GS	10.00	13.18	12.78	SPF500-80 (SANKYO)
GD	9.40	12.20	11.85	90.10.00500.080(DADCO)

\* Power gas spring available. Please contact us for details.

### Key Specification(Option)

(Qty 6 with M8×15 bolt)



Option Code	Specification
K	Dedicated key is attached. (It is not assembled to the main unit)
NF	Nitrogen gas is not charged. Applicable to GK,GS and GD only.

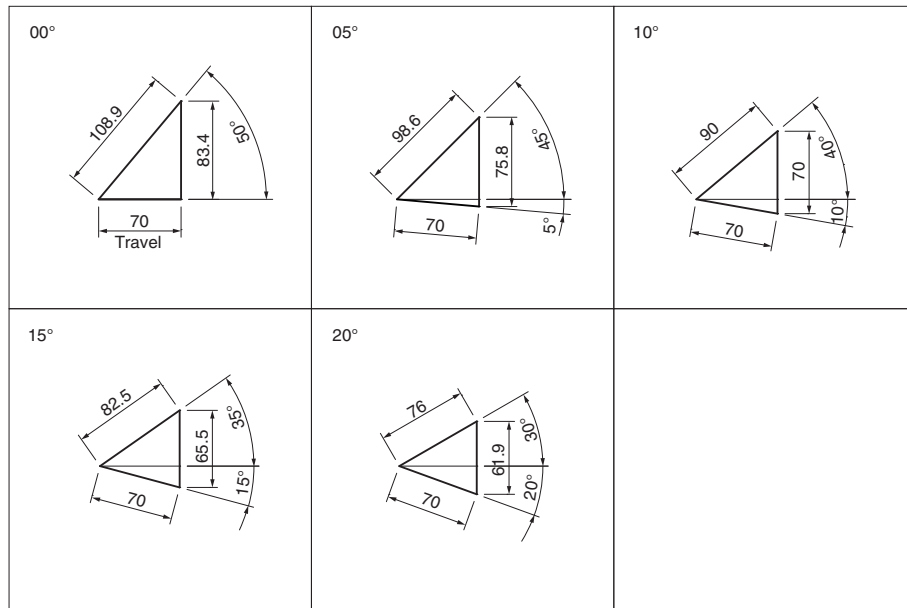


Order **SVSC220 - 10 - 70 - GK - NF - K**

# Die Mounted Cam Unit svsc220

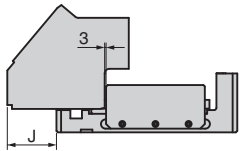
FOR PIERCE

## Cam Diagram

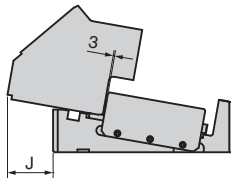


## Required space for removing

Working Angle 00°



Working Angle 05°~20°



Working Angle	J
00°	106
05°	104
10°	98
15°	94
20°	87

## Table of Components

No.	Description	Qty	Material and Remark	No.	Description	Qty	Material and Remark
①	Cam Driver	1	GGG60(FCD600)	⑮	Cam Holder	1	GGG60(FCD600)
②	Slide Plate	2	Bronze With Graphite(VSM-32-SP2)	⑯	Spring Block	2	S45C HRC55~
③	Hexagon Socket Head Bolt	28	SCM435(M8×15)	⑰	Hexagon Socket Head Bolt	2	SCM435(M8×35)
④	Slide Plate	2	Bronze With Graphite(VSM-31-SP2)	⑱	Cam Slide Guide(Lower)	1	S45C HRC55~
⑤	Cam Positive Return	2	S45C HRC28~	⑲	Hexagon Socket Head Bolt	3	SCM435(M12×35)
⑥	Hexagon Socket Head Bolt	2	SCM435(M8×25)	⑳	Dowel Pin with Female Thread	2	SUJ2 (#12-40)
⑦	Cam Slider	1	GGG60(FCD600)	㉑	Slide Plate	4	SCM440(VSM-53-ST01)
⑧	Slide Plate	2	SCM440(VSM-64-ST01)	㉒	Hexagon Socket Head Bolt	8	SCM435(M8×20)
⑨	Spring Stopper	1	S45C (LH)	㉓	Keeper Plate	2	S45C HRC28~
⑩	Hexagon Socket Head Bolt	8	SCM435(M8×30)	㉔	Cam Slider Stopper	1	S45C
⑪	Screw Plug with Nose	2	SCM435(M6×12)	㉕	Stopper	4	Urethane
⑫	Spring Stopper	1	S45C (RH)	㉖	Hexagon Socket Head Bolt	2	SCM435 M16×65
⑬	Slide Plate	2	Bronze With Graphite(VSM-20-SP2)	㉗	Lock Spacer	2	SS400
⑭	Slide Plate	2	Bronze With Graphite(VSM-25-SP2)	㉘	Hexagon Socket Head Bolt	2	SCM435 M10×110

