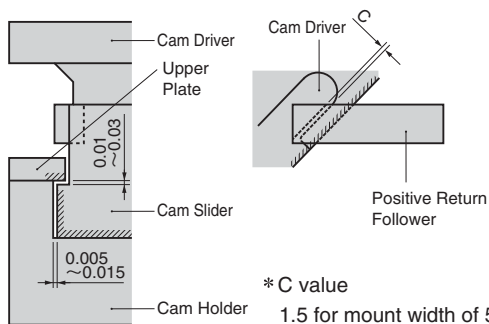


- Universal die mounted type.
- Sliding type with highly rigid box guide.
- 52, 65, 100, 150, 200, 250, 300 to 600 (at increments of 100 mm) are available for the mount width.
- Available angle is 0° to 20° at increments of 5° (65 to 150 width).

Slide Structure and Positive Return Structure



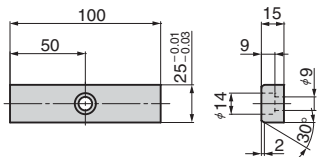
* C value

- 1.5 for mount width of 52 and 65
- 2.0 for mount width of 100 or more

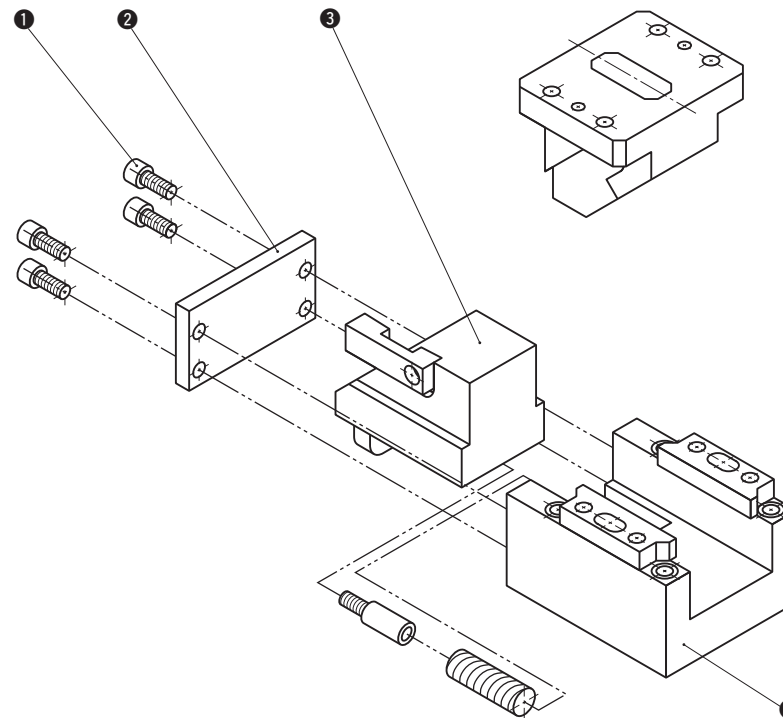
* Oilless Ssystem at Hatched Area

Option of SKC/SKCA

- Key specification (-K)
Key details (1 off with M8 × 20 bolt)
SKC/SKCA 400/500/600



SKC/SKCA52 to 300 Structure and Assembly / Disassembly



Disassembly method of SKC/SKCA

- 1) Remove hexagon socket head bolt (1) and stopper (backup) plate (2).
- 2) Pull and remove cam slider (3) to the rear.

Assembly method of SKC/SKCA

- 1) Assemble components in the reverse order of disassembly.
 - Make sure that there is no foreign matter on the sliding area and assemble components.
 - The clearance between the cam slider and cam holder (4) is controlled. Match the stamped serial number on the holder and slider before assembly.
 - When cam is disassembled and then reassembled, please do not forget to assemble all bolts provided

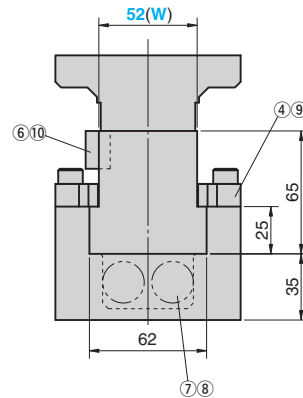
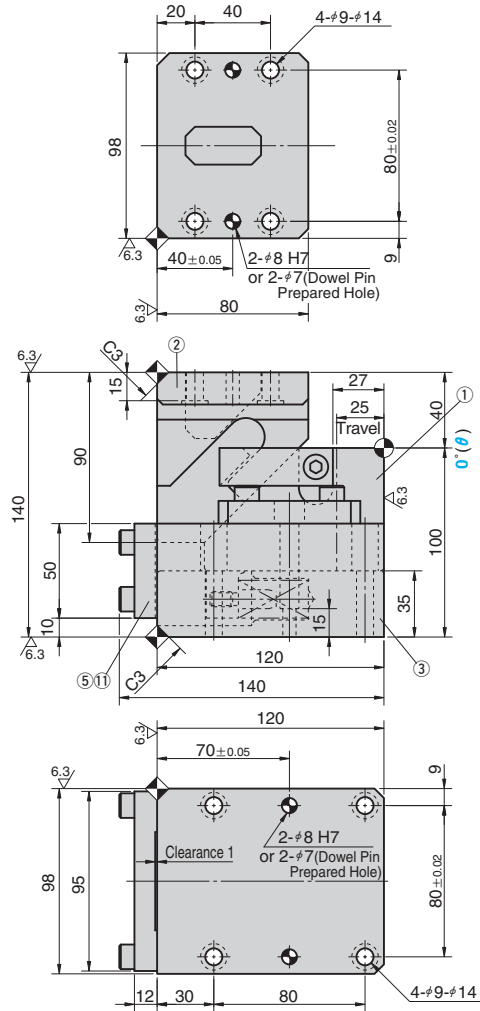
Die Mounted Cam Unit

FOR PIERCE

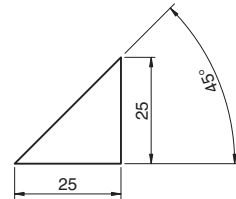
CAD FILE

SKCA52-00-25 (Dowel Pin Hole Finished)
SKC 52-00-25 (Dowel Pin Prepared Hole)

▲ Tolerance are from dowel pin finished hole.



Cam Diagram



Working Force kN(tonf)		Spring Force N(kgf)		Total Weight kg	Catalog No.	(W)	(θ)	Travel S
Standard Working Force (one million strokes)	Allowable Working Force (300,000 strokes)	Initial Load	Final Load					
14.7 (1.5)	29.4 (3.0)	144.0 (14.7)	594.0 (60.7)	8.0	SKCA SKC	52	00	25

Order **Catalog No.** **(W)** - **(θ)** - **S**
SKCA 52 - 00 - 25

Option Refer to page 552 for detailed specifications of tapped holes and dowel pin holes (prepared hole, finish hole) for retainer.

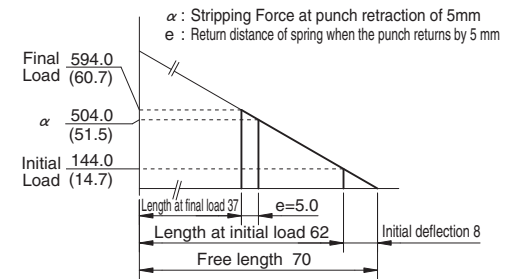
Table of Components

No.	Description	Qty	Material and Remark
①	Cam Slider	1	FC250 with Graphite
②	Cam Driver	1	FC250 with Graphite
③	Cam Holder	1	FC250
④	Upper Plate	2	S45C Copper Powder Sintered (#220)
⑤	Stopper Plate	1	SS400(1020)
⑥	Positive Return Follower	1	S45C(1045)
⑦	Spring Guide Pin	2	φ10×35
⑧	Coil Spring	2	TF20-70
⑨	Hexagon Socket Head Bolt	4	SCM435 M8×25
⑩	Hexagon Socket Head Bolt	1	SCM435 M8×20
⑪	Hexagon Socket Head Bolt	4	SCM435 M8×30

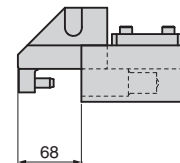
Spring Diagram

(Stripping Force at punch retraction of 5mm)

- Spring used TF20-70 (2 pieces)
- Spring constant 9.0N/mm(0.92kgf/mm)

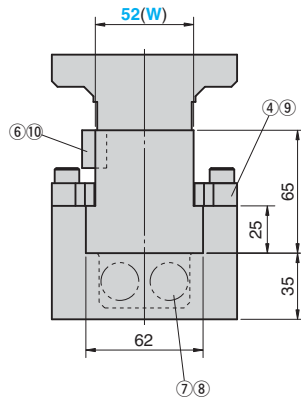
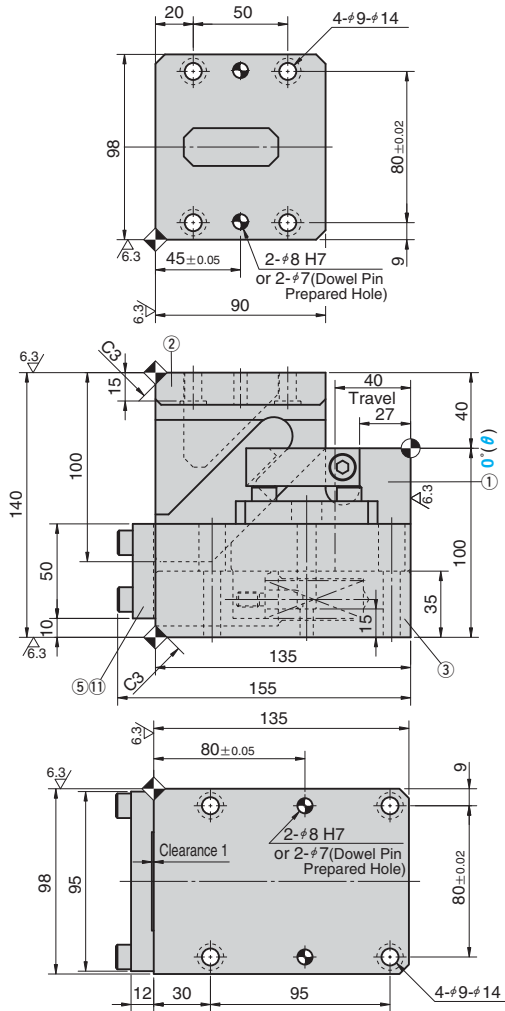


Space for removing

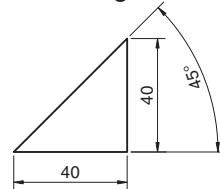


SKCA52-00-40 (Dowel Pin Hole Finished)
SKC 52-00-40 (Dowel Pin Prepared Hole)

Tolerance are from dowel pin finished hole.



Cam Diagram



Working Force kN(tonf)		Spring Force N(kgf)		Total Weight kg	Catalog No.	(W)	(θ)	Travel S
Standard Working Force (one million strokes)	Allowable Working Force (300,000 strokes)	Initial Load	Final Load					
14.7 (1.5)	29.4 (3.0)	100.8 (10.2)	604.8 (61.4)	8.0	SKCA SKC	52	00	40

Order Catalog No. **SKCA** (W) **52** - (θ) **00** - S **40**

Option Refer to page 552 for detailed specifications of tapped holes and dowel pin holes (prepared hole, finish hole) for retainer.

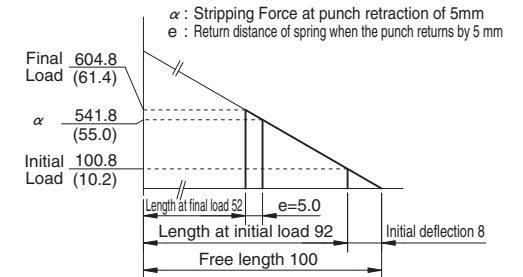
Table of Components

No.	Description	Qty	Material and Remark
①	Cam Slider	1	FC250 with Graphite
②	Cam Driver	1	FC250 with Graphite
③	Cam Holder	1	FC250
④	Upper Plate	2	S45C Copper Powder Sintered (#220)
⑤	Stopper Plate	1	SS400(1020)
⑥	Positive Return Follower	1	S45C(1045)
⑦	Spring Guide Pin	2	φ10×35
⑧	Coil Spring	2	TF20-100
⑨	Hexagon Socket Head Bolt	4	SCM435 M8×25
⑩	Hexagon Socket Head Bolt	1	SCM435 M8×20
⑪	Hexagon Socket Head Bolt	4	SCM435 M8×30

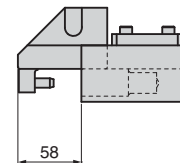
Spring Diagram

(Stripping Force at punch retraction of 5mm)

- Spring used TF20-100 (2 pieces)
- Spring constant 6.3N/mm(0.64kgf/mm)



Space for removing



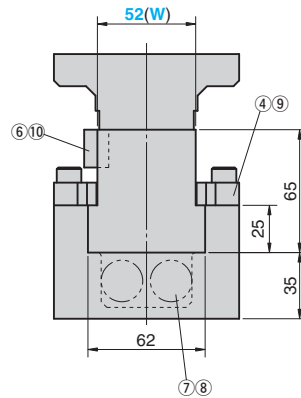
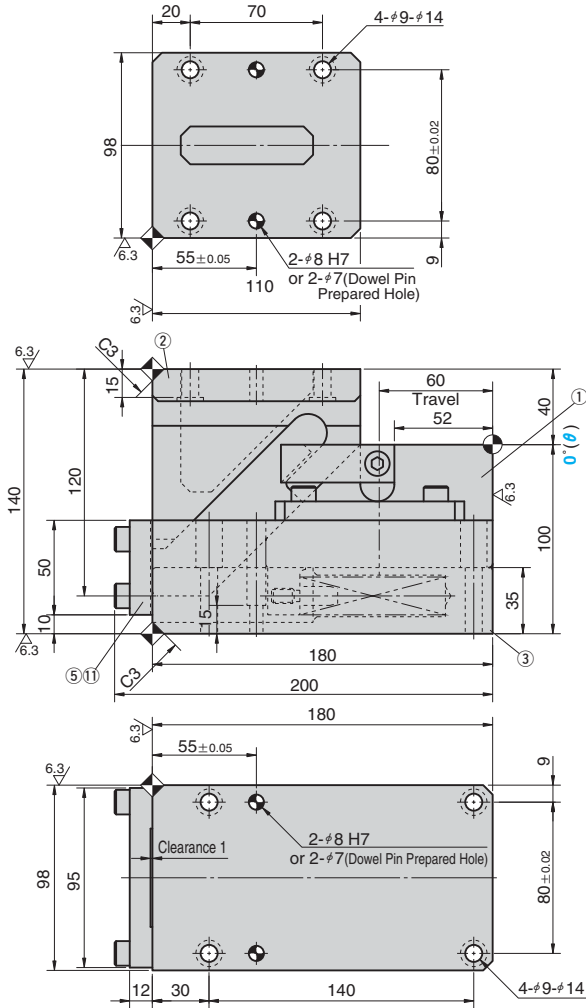
Die Mounted Cam Unit

FOR PIERCE

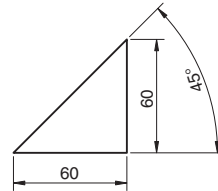
CAD FILE

SKCA52-00-60 (Dowel Pin Hole Finished)
SKC 52-00-60 (Dowel Pin Prepared Hole)

⚠ Tolerance are from dowel pin finished hole.



Cam Diagram



Working Force kN(tonf)		Spring Force N(kgf)		Total Weight kg	Catalog No.	(W)	(θ)	Travel S
Standard Working Force (one million strokes)	Allowable Working Force (300,000 strokes)	Initial Load	Final Load					
14.7 (1.5)	29.4 (3.0)	109.2 (11.2)	613.2 (62.8)	14.0	SKCA SKC	52	00	60

Order **Catalog No.** SKCA **(W)** 52 **(θ)** 00 **S** 60

Option Refer to page 552 for detailed specifications of tapped holes and dowel pin holes (prepared hole, finish hole) for retainer.

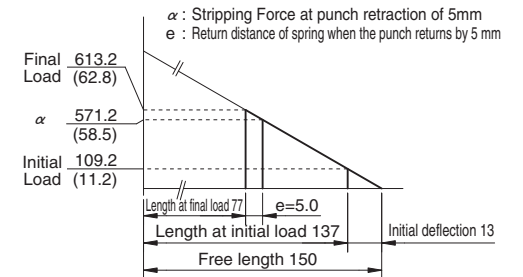
Table of Components

No.	Description	Qty	Material and Remark
①	Cam Slider	1	FC250 with Graphite
②	Cam Driver	1	FC250 with Graphite
③	Cam Holder	1	FC250
④	Upper Plate	2	S45C Copper Powder Sintered (#220)
⑤	Stopper Plate	1	SS400(1020)
⑥	Positive Return Follower	1	S45C(1045)
⑦	Spring Guide Pin	2	φ10×35
⑧	Coil Spring	2	TF20-150
⑨	Hexagon Socket Head Bolt	4	SCM435 M8×25
⑩	Hexagon Socket Head Bolt	1	SCM435 M8×20
⑪	Hexagon Socket Head Bolt	4	SCM435 M8×30

Spring Diagram

(Stripping Force at punch retraction of 5mm)

- Spring used TF20-150 (2 pieces)
- Spring constant 4.2N/mm(0.43kgf/mm)



Space for removing

