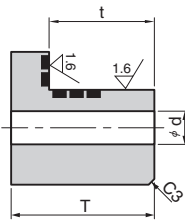
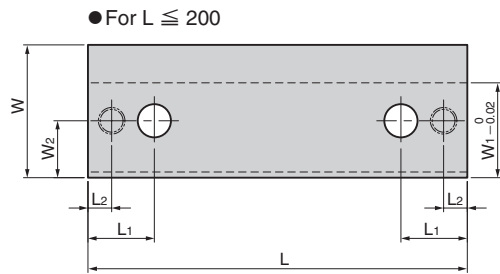
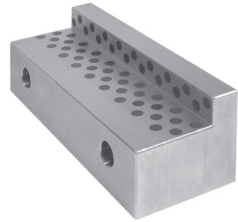
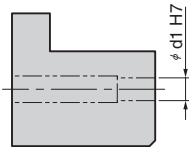
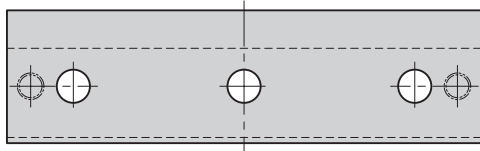


VSOL-□



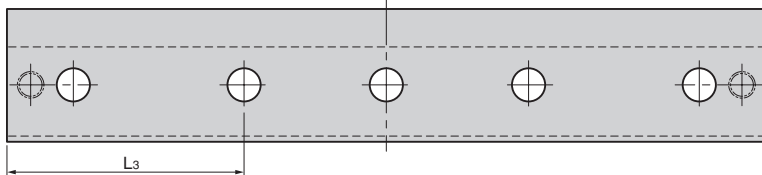
⚠ T and t have the adjusting allowance of 0.5 mm.

● For $L = 250$



⚠ Dowel pin hole (ϕd_1) is not machined.

● For $L = 400$



● Sliding Direction



Material : Bronze with Graphite (SO#50 SP2)

Catalog No.	W	L	W ₁	W ₂	L ₁	L ₂	L ₃	T	t	d	d ₁
VSOL-01	25	125	18	9				15.5	8.5	9	6
VSOL-02		160									
VSOL-03	32	125	22	11	27.5	10		30.5	15.5	11	8
VSOL-04		200									
VSOL-05	55	100	37	20				55.5	39.5	13.5	10
VSOL-06		160									
VSOL-07	70	160	50	30	35	12.5		75.5	55.5	17.5	12
VSOL-11		200									
VSOL-12	85	250	63	38	42.5	15		90.5	65.5	22	16
VSOL-13		400									
VSOL-15	85	160	63	38	42.5	15	125	90.5	65.5	22	16
VSOL-16		200									
VSOL-17	85	250	63	38	42.5	15	125	90.5	65.5	22	16
VSOL-18		400									
VSOL-20	85	400	63	38	42.5	15	125	90.5	65.5	22	16



Order

Catalog No.

VSOL-12

Recommended Mounting Bolt and Dowel Pin

Catalog No.	W	L	Recommended Mounting Bolt DIN 912	Recommended Dowel Pin DIN7979
VSOL-01	25	125	M8×30	φ6×20
VSOL-02		160		
VSOL-03	32	125	M10×50	φ8×40
VSOL-04		160		
VSOL-05	55	200	M12×80	φ10×60
VSOL-06		100		
VSOL-07	70	160	M16×100	φ12×70
VSOL-11		200		
VSOL-12	85	250	M20×120	φ16×70
VSOL-13		400		
VSOL-15	85	160	M20×120	φ16×70
VSOL-16		200		
VSOL-17	85	250	M20×120	φ16×70
VSOL-18		400		
VSOL-20	85	400	M20×120	φ16×70



Example

