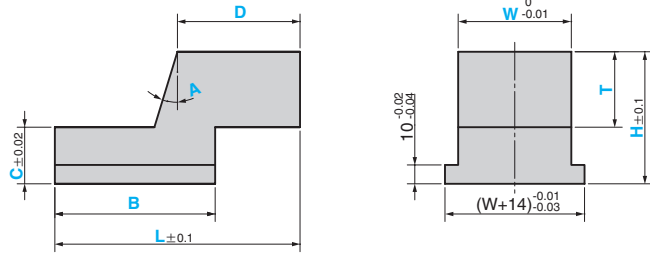
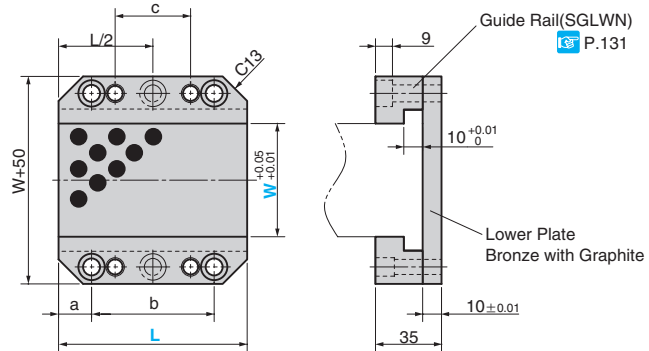


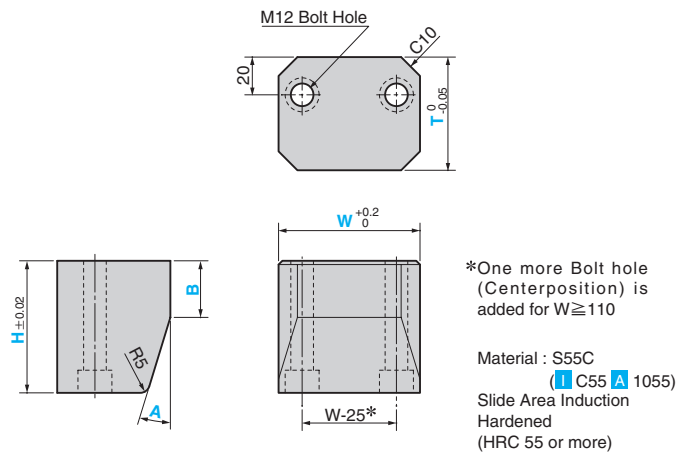
Slide Core **SLCRC** (Material : S55C ..... **T** C55 **A** 1055)  
**SLCRM** (Material : SCM435 ..... **T** 34CrMo4 **A** 4137)



Slide Guide Set **SDGS**



Locking Block **LKBF**



## Slide Core

Catalog No.	Increments of 10mm				Increments of 1mm			A Increments of 1°
	W	L	H	T	B	C	D	
<b>SLCRC</b>	70	130	80	50	B<L	C<H	D<L	A≤25
<b>SLCRM</b>	150	250	120	90				

Order **Catalog No.** **W** - **L** - **H** - **T**  
**SLCRC** 100 - 200 - 120 - 80  
 - **B** - **C** - **D** - **A**  
 - 120 - 50 - 100 - 17

**A** Provide drawing for other additional machining.

## Slide Guide Set

a	b	c	Catalog No.	W Increments of 10mm	L
	45	20	<b>SDGS</b>	70~150	80
17.5	65	40			100
	42.5	60			120
	52.5	70			140

Order **Catalog No.** **W** - **L**  
**SDGS** 100 - 120

**A** Provide drawing for spill port of angular pin.

## Locking Block

Catalog No.	W Increments of 10mm	H	T	B Increments of 1mm	A Increments of 1°
<b>LKBF</b>	70~150	60·70	50·60	B<H	A≤25

Order **Catalog No.** **W** - **H** - **T** - **B** - **A**  
**LKBF** 100 - 70 - 50 - 33 - 17

**A** Contact sales office if necessary specification is required.