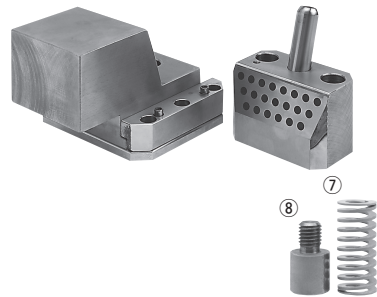
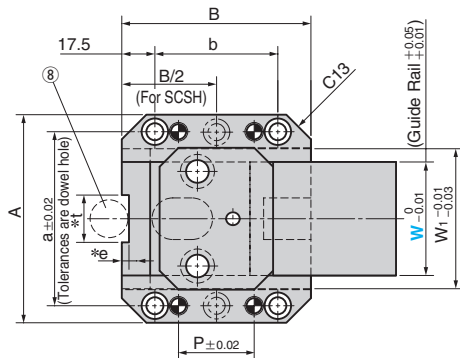


SCSS
SCSH (Slide Core Long Type)



***e, t Dimension**

Catalog No.	e	t
SCSS	5	25
SCSH	2	20

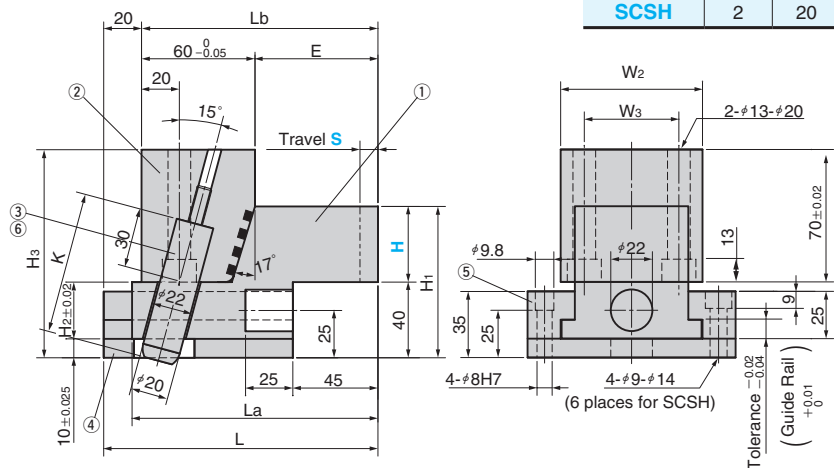
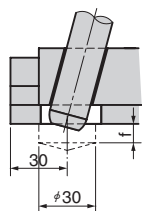


Table of Components

No.	Description	Qty	Material and Remark
①	Slide Core	1	S55C
②	Locking Block	1	S55C HQI HRC55~ (LKBA)
③	Angular Pin	1	SUJ2 HQI HRC58~
④	Lower Plate	1	Bronze with Graphite(SP2)
⑤	Guide Rail(SGLWN)	2	Bronze with Graphite(SP2)
⑥	Hexagonal Socket Head Bolt	1	SCM435 M8
⑦	Coil Spring	1	TF20-45(Accessory)
⑧	Stopper (STB)	1	S45C(Accessory)



Angular Pin
Relief Hole dimension f

H	Travel S	f
40·50	10	10
	13	20
70	10	0
	13	10

Catalog No.	W	H	A	a	B	b	P	W ₁	E	H ₁	H ₂	H ₃	L	La	Lb	W ₂	W ₃
SCSS	60	40	110	92	100	65	40	74	65	80	30	110	145	130	125	75	50
		50							61.9	90							
	90	40	140	122	120	85	60	104	65	80	40	120	165	150	145	100	70
		50							61.9	90							
SCSH	60	50	110	92	120	85	60	74	81.9	90	30	110	145	130	125	75	50
		70							78.9	110							
	90	50	140	122	120	85	60	104	81.9	90	30	110	145	130	125	100	70
		70							78.9	110							

Catalog No.	W	H	Travel S
SCSS	60	40	10
		50	13
SCSH	60	50	10
		70	13
SCSH	90	50	10
		70	13

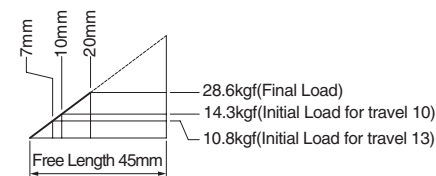
K Dimension

Travel S	K
10	75
13	85

Spring Diagram

Consider the load carefully when a part is installed at the end of the slide core.

- Spring Used TF20-45
- Spring constant 1.43kgf/mm



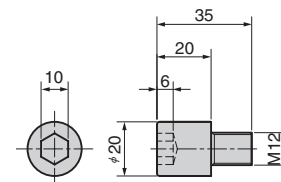
Order

Catalog No.	W	H	S
SCSS	60	50	13
SCSH	90	70	10

- For details of the guide rail (⑤ SGLWN25-100), refer to page. 131.
- For details of the locking block and the angular pin, refer to page. 125.

- Material of the slide core can be changed. Please contact the Sales Dept.

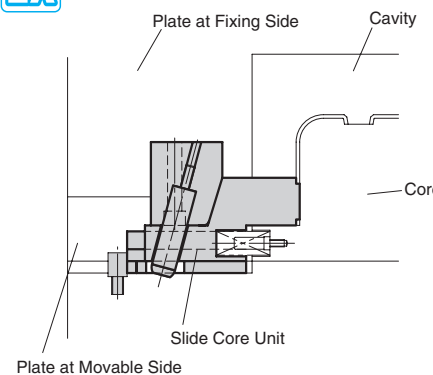
Stopper STB(Accessory)



Material : S45C C45 A 1045



Example of using SCSS / SCSH



Material detail

- S55C(①·②) C50 A 1055
- SUJ 2(③) B1 A 52100
- SCM435(⑥) 34CrMo4 A 4137
- S45C(⑧) C45 A 1045