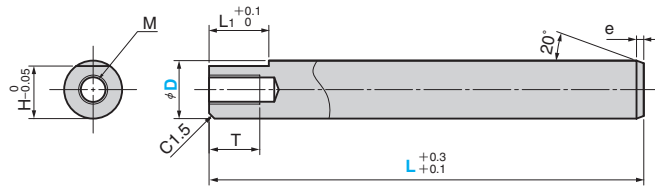


Inclined Pins

FOR KOCU-S

RoHS

BOK



● Material

EN Standard	JIS	AISI-ASTM	ISO
1.1213(Cf53)	S50C	1049	C50
1.7225(42CrMo4V)	SCM440	4140	42CrMo4
1.7131(16MnCr5)	SCR415	—	16MnCr5
1.4112(X90CrMov18)	—	—	—

Hardness :HRC58 ~ 62

D	Tolerance		L ₁	T	e	H	M	Catalog No.	D	Tolerance	L Increments of 1mm	Material (EN Standard)					
	h7	g6															
8	0	-0.005	8.5	7	7	M4	BOK		8		L ≤ 1000						
10	-0.015	-0.014	10.5	8	9	M5											
12	0	-0.006	12.5	10	11	M6											
16	-0.018	-0.017	16.5	14	14.5	M8											
20	0	-0.007	20.5	18	18	M10											
25	-0.021	-0.020	25.5	23	22.5	M12							20	h7	g6	L ≤ 1500	1.1213 1.7225 1.7131 1.4112
30	0	-0.009	30.5	24	32												
35	-0.025	-0.025	35.5	32	36												
40	0	-0.009	40.5	32	36	M16							40			L ≤ 2000	
45	-0.025	-0.025	45.5														

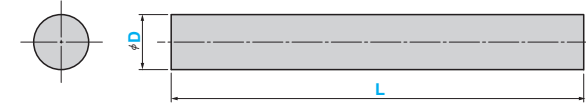
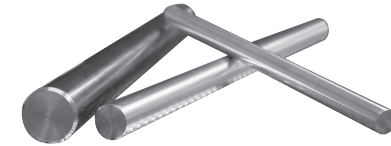
Order **Catalog No.** - **D** - **L** - **Material**
BOK - **30h7** - **900** - **1.7225**

Inclined Pins

FOR KOCU-S

RoHS

BOR



● Material

EN Standard	JIS	AISI-ASTM	ISO
1.1213(Cf53)	S50C	1049	C50
1.7225(42CrMo4V)	SCM440	4140	42CrMo4

Hardness : 1.1213 HRC58 ~ 62
 (Depth 1.5 ~ 2.0mm)
 1.7225 Tempered

D	Tolerance		Catalog No.	D	Tolerance	L Increments of 1mm	Material (EN Standard)				
	h7	g6									
8	0	-0.005	BOR	8		L ≤ 1000					
10	-0.015	-0.014									
12	0	-0.006									
16	-0.018	-0.017									
20	0	-0.007						20	h7	L ≤ 1500	1.1213 1.7225
25	-0.021	-0.020									
30	0	-0.009									
35	-0.025	-0.025						35		L ≤ 2000	
40	0	-0.009									
45	-0.025	-0.025									

Order **Catalog No.** - **D** - **L** - **Material**
BOR - **10g6** - **900** - **1.7225**