

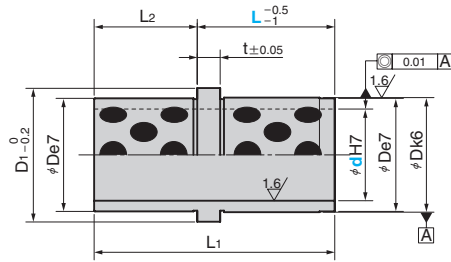


# Guide Bushing

FOR EJECTOR AND STRIPPER PLATES

RoHS

SOVM



● Sliding Direction  
↔

Material : Bronze with Graphite  
(SO#50 SP2)

\*Operation ambient temperature: 0 to 300°C

L1	L2	t	D	Tolerance		D1	d H7	Catalog No.	d	L
				e7	k6					
15	6	3	14	-0.032	+0.012	16	9	SOVM	9	009
				-0.050	+0.001		10		+0.015 0	10
26	9		20			25	14		14	017
							15		+0.018 0	15
39	17	6	26	-0.040	+0.015	31	18	SOVM	18	022
				-0.061	+0.002		20			20
49	22	6	30			35	22		22	027
							24		+0.021 0	24
63	27		42			47	30		30	036
									-0.050	+0.018



Order

Catalog No. SOVM    d 24    -    L 036

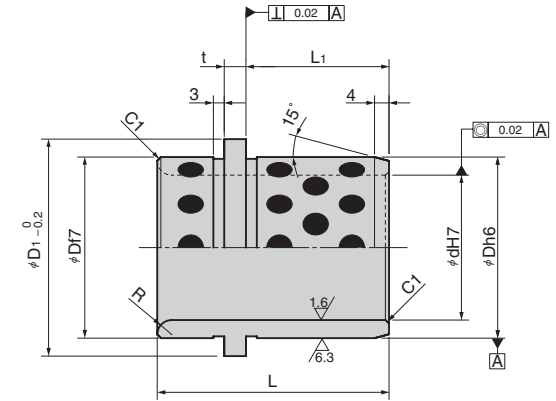


# Guide Bushing

FOR EJECTOR AND STRIPPER PLATES

RoHS

TSOEG



● Sliding Direction  
↔

Material : Bronze with Graphite  
(SO#50 SP2)

\*Operation ambient temperature: 0 to 300°C

d	L	L1	t	D f7	D h6	D1	d H7	R	Catalog No.	Nominal
25	43	24	7.5	35	35	40	25	3	TSOEG	25
30				42	42	47	30			+0.021 0
40	60	35.5	6	50	50	59.9	40	4	TSOEG	40.1
										64
50	77	44.5	8	63	63	71.9	50		TSOEG	50.3
										92
60	78	49	7.5	80	80	86	60	3	TSOEG	60
										95
63	100	62.5	8	80	80	89.9	63	4	TSOEG	63.6
										108



Order

Catalog No. TSOEG    -    Nominal 30