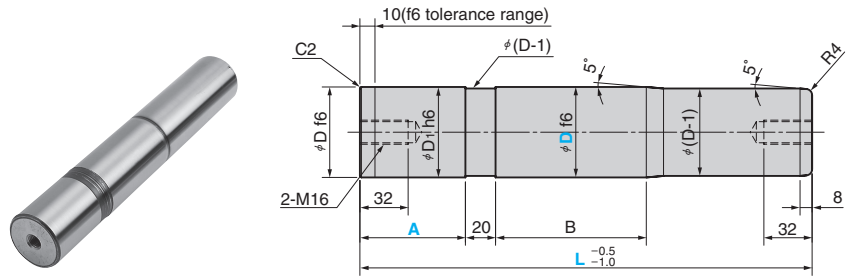


Guide Pin

FOR LARGE DIE

RoHS

RGPS



Material : S45C (I C45 A 1045)
Hardness : HRC55 ~ 60
Induction hardening at areas B

D f6	D1 h6	B	Catalog No.	D	L Increments of 5mm	A
60	-0.030	60	RGPS	60	220 ~ 400	70
	-0.049	80			240 ~ 400	90
80		130			280 ~ 400	100
				80	300 ~ 400	120



Order

Catalog No. **RGPS** D **60** - L **350** - A **70**



① shows loosening lock with bolt.
② shows loosening lock plate.



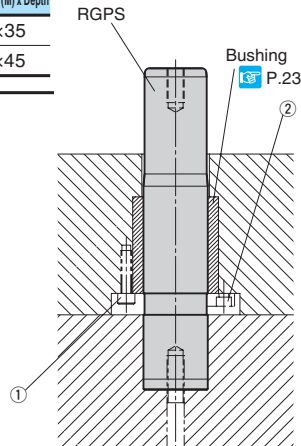
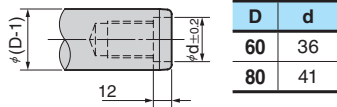
Option

Option Code	Specification						
GM	Tapped hole for assist pin mounting is drilled at the end.						
	<table border="1"> <thead> <tr> <th>D</th> <th>Thread diameter (M) x Depth</th> </tr> </thead> <tbody> <tr> <td>60</td> <td>M30x35</td> </tr> <tr> <td>80</td> <td>M36x45</td> </tr> </tbody> </table>	D	Thread diameter (M) x Depth	60	M30x35	80	M36x45
D	Thread diameter (M) x Depth						
60	M30x35						
80	M36x45						

Order **RGPS 60 - 350 - 70 - GM**

Refer to page. 20 for the assist pin details.

• GM specification

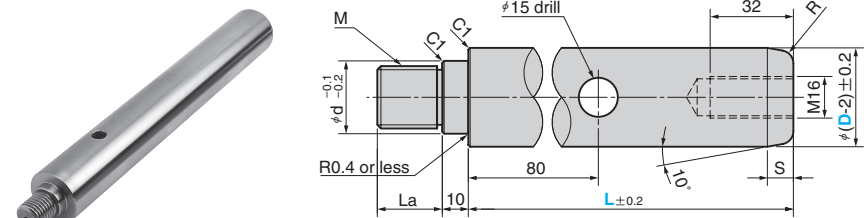


Assist Pin

FOR GUIDE PIN (RGPL · RGPS)

RoHS

SPGP



*D is the guide pin diameter.

Material : S45C (I C45 A 1045)

R	S	d	M	La	Catalog No.	D	L Increments of 5mm
8	12	35	M30	30	SPGP	60	150 ~ 500
10	15	40	M36	40		80	200 ~ 600



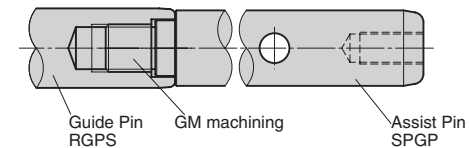
Order

Catalog No. **SPGP** D **60** - L **500**



Example

• The guide pin length can be extended.
Machine the guide pin for installation of the assist pin (Option: GM machining).

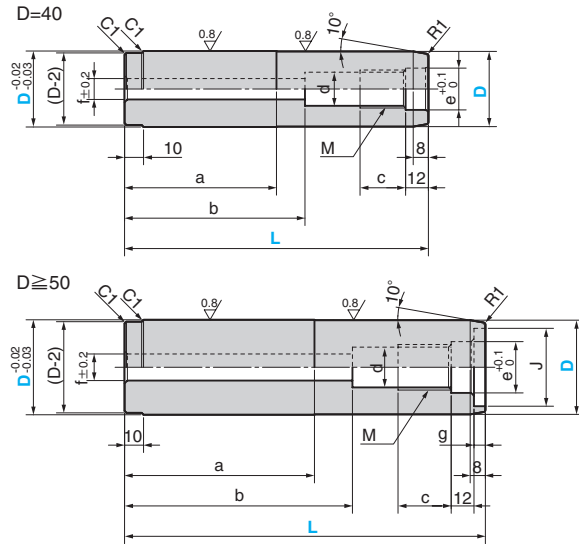


Guide Pin For Large Die

BOLT TYPE

RoHS

RGPSB



*Hexagon bolt is included.

Material : S45C (T C45 A 1045)
Hardness : HRC55~
(Induction Hardened)

D tolerance	d	e	f	g	J	a	b	M×c	Accompanying Bolt
40	-0.04 -0.05	17.7	22	11	—	80	95	M20×24	M10×120
50	-0.06 -0.07	21.2	27	14	6	100	120	M24×28	M12×150
60	-0.07 -0.08	26.6	33	18	7.5	120	145	M30×33	M16×170
80	-0.08 -0.10	32.0	40	22	8.5	160	200	M36×43	M20×230

Catalog No.	D	L
RGPSB	40	160
	50	190
	60	230
	80	290

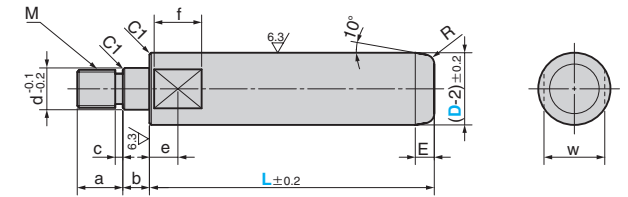
Order -

Assist Pin

FOR GUIDE PIN (RGPSB)

RoHS

SPGPB



*D is guide pin diameter.

Material : S45C (T C45 A 1045)
Accessory : Spring Washer

d	a	b	c	e	f	M	E	R	w	Accompanying Washer	Catalog No.	D	L Increments of 10mm
22	20	14	4	15	25	M20	10	5	32	For M22	SPGPB	40	60 ~ 200
27	28	16	5	20	30	M24	12		41	For M27		50	80 ~ 250
33	30	18		25	35	M30	15	8	50	For M33		60	100 ~ 250
40	40		30	M36		10		70	For M42	80		120 ~ 300	



Order

Order -