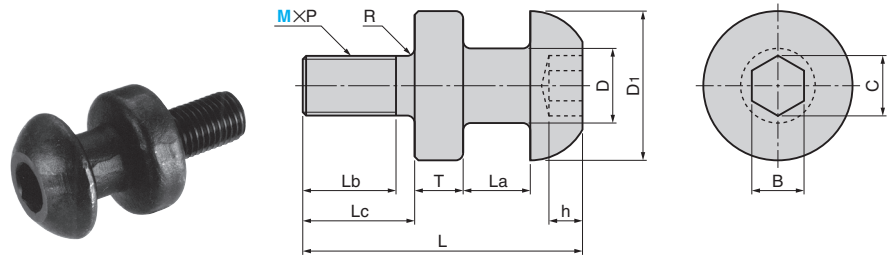


Lifting Hook

MOORING OR CLEAT TYPE

RoHS

HKB



Material : S45C
 (I C45 A 1045)
 Surface treatment
 :Black oxide

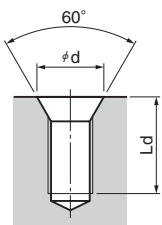
M×P	D	D ₁	La	Lb	Lc	T	L	R	h	B	C	Allowable Load N(kgf)/1P	Catalog No.	M
10×1.5	13	32	10	16	20	8	46	1.5	5	8	9.2	2452 (250)		10
12×1.75	16	36	13	20	24	10	57	1.5	6	10	11.7	3530 (360)		12
16×2.0	20	40	18	25	30	13	75	2.0	9	14	16.3	6669 (680)		16
20×2.5	25	48	20	32	37	16	90	2.0	12	17	19.8	10395(1060)	HKB	20
24×3.0	32	58	25	40	47	20	111	2.5	13	19	22.1	15004(1530)		24
30×3.5	36	68	30	48	56	22	131	3.0	16	22	25.6	23830(2430)		30
36×4.0	40	78	30	58	68	25	148	3.0	18	27	31.4	34814(3550)		36

Order Catalog No. M
 HKB 20

Attaching Method

Chamfer tapped holes and attach the eye bolt closely to the seating.

M	d	Ld
10	15	22
12	18	26
16	23	32
20	27	40
24	35	50
30	42	60
36	50	72

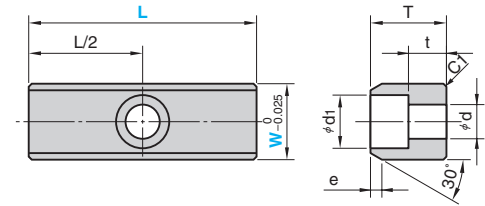


Locating Block

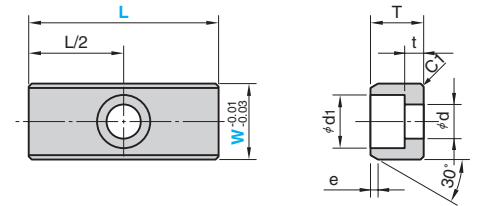
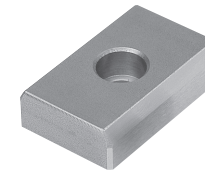
INLAY TYPE

RoHS

LK



LKU (Thin Type)



Material S45C (I C45 A 1045)

T	t	e	d	d ₁	Catalog No.	W	L
20	10	3	9	14	LK	20	60 80
		4				25	60 80 100
25	13	5	11	18	LK	28	60 80 100
						32	60 80 100

T	t	e	d	d ₁	Catalog No.	W	L
14	5	2			LKU	20	50
		3	9	14		25	100
		4				32	50

Order Catalog No. W - L
 LK 25 - 80
 LKU 32 - 50