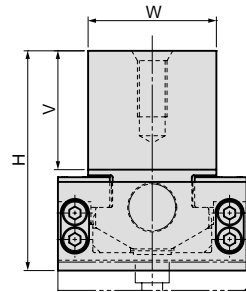
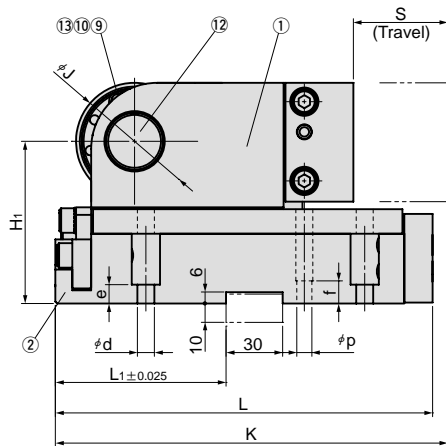
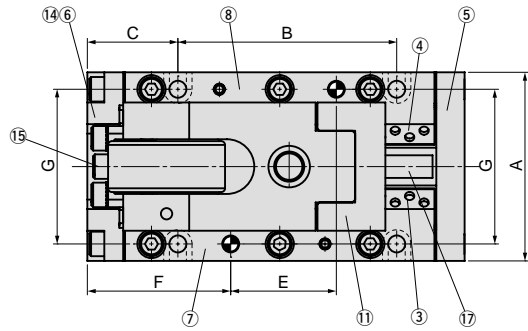
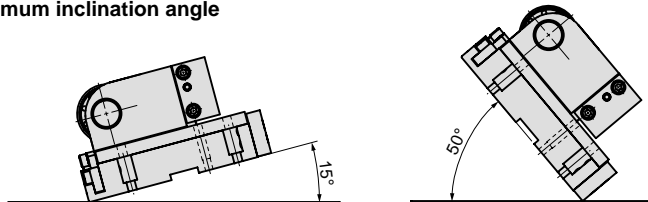


PSCX



Maximum inclination angle



Type	Travel S	A	B	C	E	F	G	H ₁	J	K	L	L ₁
03	50	100	116	48	56	76	82	86	62	208	200	90.5
	80		146		86					238	230	
05	50	120	116	48	59	73	102	103	72	208	200	90.5
	80		146		89					238	230	
	100		166		109					258	260	
15	50	170	123	50	47	88	150	120	90	216	220	96.5
	80		153		77					246	250	
	100		173		97					266	270	
20	50	240	143	52	67	90	222	150	110	258	250	102
	80		173		97					288	280	
	100		193		117					308	300	

d	e	p	f	W	V	H	Working Force(kN)	Spring Force(kN)	Catalog No	Type	Travel S
9	10	8	20	68	63	117	30	2.2	PSCX	03	50
								2.2			80
								2.2			50
9	10	8	20	88	74	140	50	2.2	PSCX	05	80
								2.2			100
								7.2			50
11	10	10	20	132	92	165	150	7.1	PSCX	15	80
								7.1			100
								7.1			50
13	12	12	25	196	110	205	200	7.1	PSCX	20	80
								7.1			100
								7.1			50

Order -

Option A key for holder is attached

Order

***Additional Option Code**
NGK:Without gas spring
NF:Nitrogen gas is not charged.

For Operation

- Please fix toolings within the range of mount face and not eccentricly.
- In order to keep necessary returning force, please set up urethane stripper.
- Please set up key or back-up depend on machining reactive force
- The angle between contact surface of driver and the sliding direction of the unit should be 50 degrees.
- The surface of driver should be contacted parallelly to sliding face of roller.

■Spring Specification

Type	Travel S	Model	Remark
03	50	M2-150-50	
	80	M2-150-80	
05	50	M2-150-50	
	80	M2-150-80	
	100	M2-150-100	
15	50	X500-50	Gas spring by KALLER
	80	X500-80	
	100	X500-100	
	50	X750-50	
20	80	X750-80	
	100	X750-100	

■Table of Components

No.	Description	Qty	Material and Remark
①	Cam Slider	1	S45C(1045)
②	Base	1	S45C(1045)
③	Cam Slide Guide-L	1	Bronze with Graphite(SO#50SP7)
④	Cam Slide Guide-R	1	Bronze with Graphite(SO#50SP7)
⑤	Front Plate	1	S45C(1045)
⑥	Stopper Plate	1	S45C(1045)
⑦	Upper Plate-L	1	Bronze with Graphite(SO#50SP7)
⑧	Upper Plate-R	1	Bronze with Graphite(SO#50SP7)
⑨	Roller	1	SUJ-2
⑩	Bush	1	Bronze with Graphite(SO#50SP2)
⑪	Mount Face Plate	1	S45C(1045)
⑫	Pin	1	S45C(1045)
⑬	Washer	2	Bronze with Graphite(SO#50SP2)
⑭	Urethane	2	Urethane
⑮	Spring Stopper	1	SS400(1020)
⑯	Spacer	1	SS400(1020)
⑰	Gas Spring	1	Refer to Spring Specification