



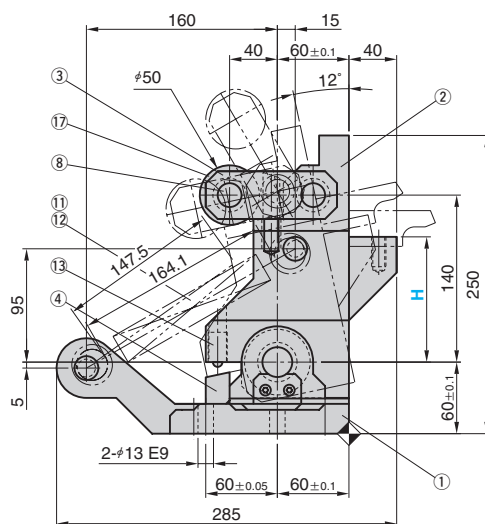
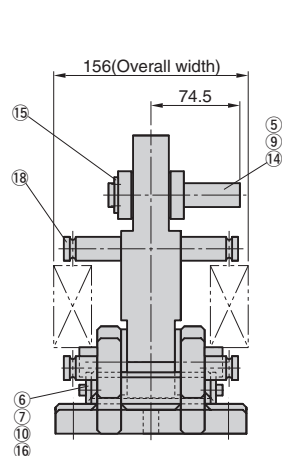
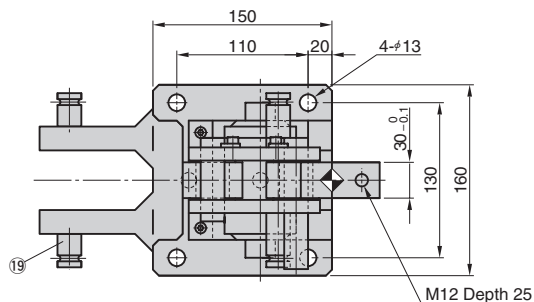
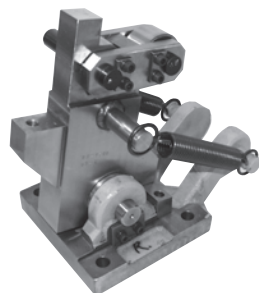
Corner Link Unit Prevent Double Hits

FOR PRE-DRAW

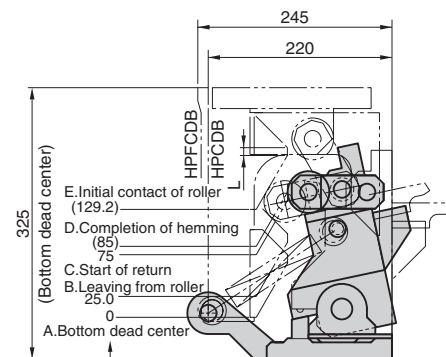


HPPC

*The drawing portrays the right side.
The left side is also symmetrical.



Operation between Driver and Unit



*These values are for L = 10.
Numbers in parentheses are subject to change with length.

Table of Components

No.	Description	Qty	Material and Remark
①	Base	1	FCD600
②	Swing Arm	1	SS400
③	H Link	1	S50C
④	Stopper	1	SS400
⑤	Oilless Bushing	2	Bronze with Graphite (SO#50 SP2)
⑥	Oilless Bushing	1	Bronze with Graphite (SO#50 SP2)
⑦	Oilless Washer	2	Bronze with Graphite (SO#50 SP2)
⑧	Hinge Pin	1	S45C
⑨	Hinge Pin	1	S45C
⑩	Hinge Pin	1	S45C
⑪	Spring	2	SWP-A
⑫	Ring	4	SS400
⑬	Ball Plunger	2	
⑭	Dry Washer	4	Bronze Sintered
⑮	Key	2	SS400
⑯	Key	1	SS400
⑰	Roller	1	S50C
⑱	Casting Pin	1	S45C
⑲	Casting Pin	2	S45C

Catalog No.	H Increments of 5 mm	R / L
HPPC	40 ~ 140	R and L

Order -

The drivers conforming to this link unit are HPCDB and HPCFDB.(P.475 to P.478)

Spring Force

Free Length (mm)	Initial Length (mm)	Initial Tensile Force N(kgf)	Final Length (mm)	Final Tensile Force N(kgf)
138.0	148.0	97.5×2 (10.0×2)	164.5	148.0×2 (15.1×2)