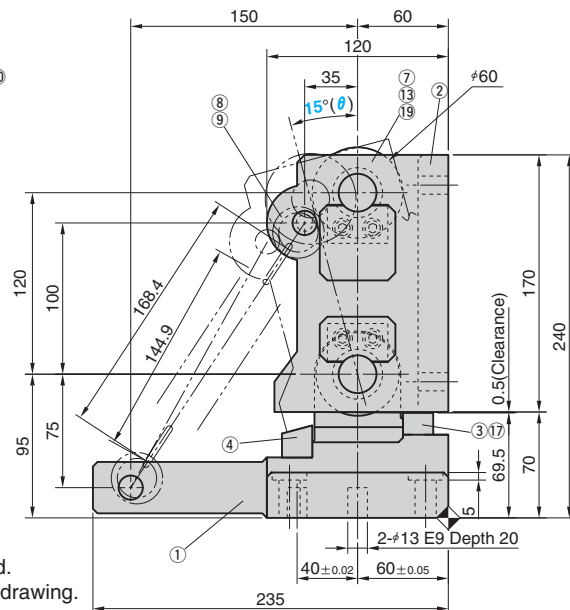
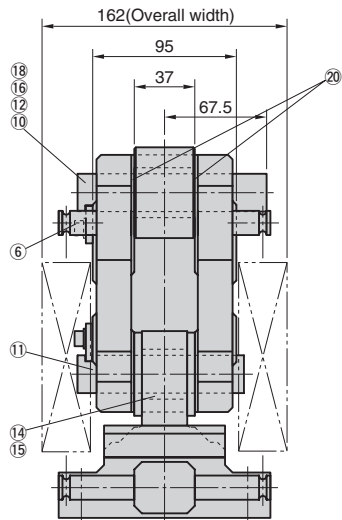
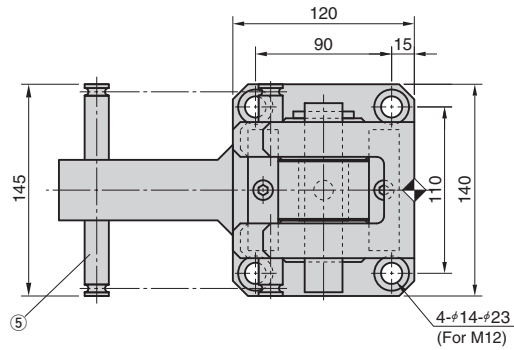
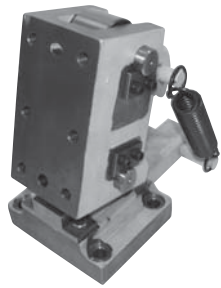


HPSL



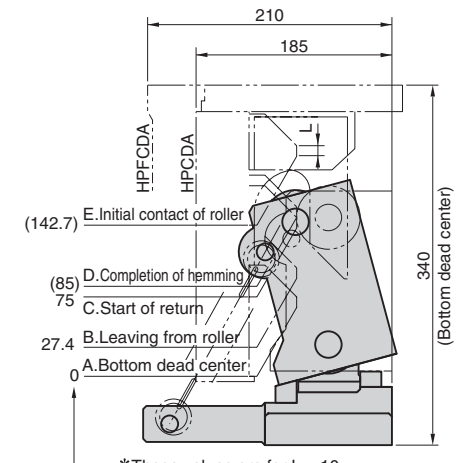
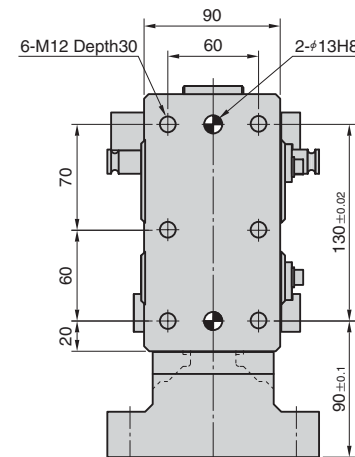
*This drawing shows the right hand.
The left hand is symmetric to this drawing.

Table of Components

No.	Description	Qty	Material and Remark
①	Base	1	FCD600
②	Bracket	1	FCD600
③	Liner	1	SS400
④	Back Stopper	1	SS400
⑤	Casting Pin	1	SS400
⑥	Casting Pin	2	SS400
⑦	Cam Roller	1	S50C
⑧	Ring	4	SS400
⑨	Spring	2	SWP-A
⑩	Hinge Pin	1	S45C

No.	Description	Qty	Material and Remark
⑪	Hinge Pin	1	S45C
⑫	Key	2	SS400
⑬	Oilless Bushing	1	Bronze with Graphite (SO#50 SP2)
⑭	Oilless Bushing	1	Bronze with Graphite (SO#50 SP2)
⑮	Oilless Washer	2	Bronze with Graphite (SO#50 SP2)
⑯	Bolts with hexagonal socket head	4	SCM435 M6×16
⑰	Bolts with hexagonal socket head	2	SCM435 M8×12
⑱	Spring washer	4	For M6
⑲	Oilless Bushing	1	Bronze with Graphite (SO#50 SP2)
⑳	Oilless Washer	2	F920 LWM24

Operation between Driver and Unit

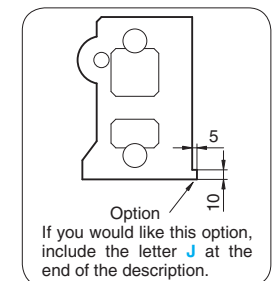


*Those values are for L = 10.
Numbers in parentheses are subject to change with length.

Spring Force

Free Length	Initial Length	Initial Tensile Force N(kgf)	Final Length	Final Tensile Force N(kgf)
130.0	144.9	178.9×2 (18.2×2)	168.4	303.9×2 (31.0×2)

Option - J



Catalog No.	(θ)	R / L
HPSL	15	R · L

Order

The drivers conforming to this link unit are HPCDA and HPFCDA.(P.477 to P.480)

Sankyo Oilless can machine or modify the surface of the brackets. Please ask your sales representative.