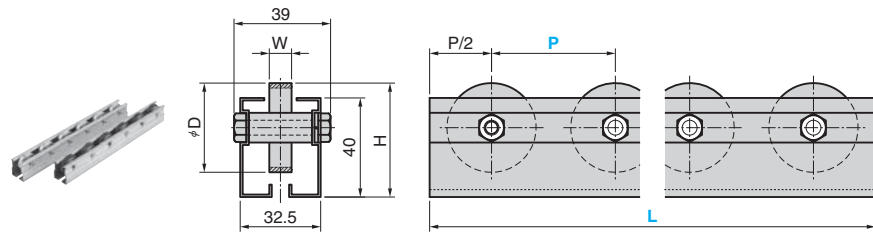


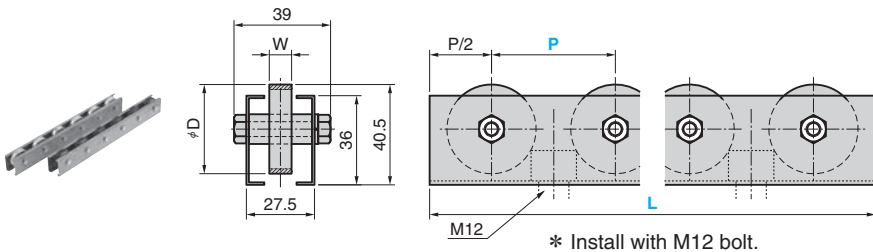
Single Carrier

FOR PANEL STACK AND TRANSFER

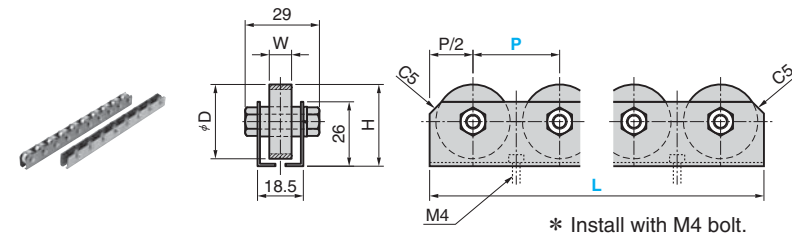
SCA



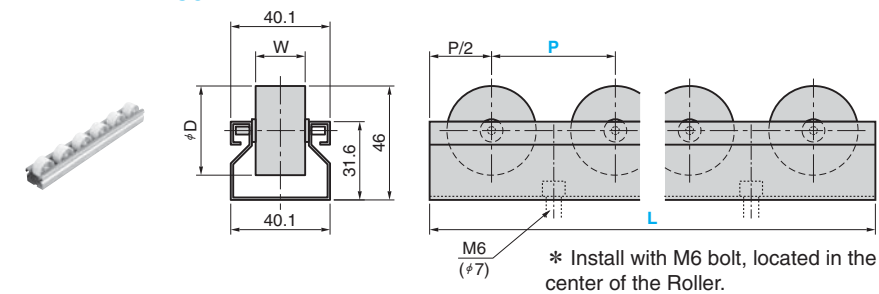
SCB



SCH



SCP



⚠ Hatched Area of the wheel represents rubber lining (40R and 30R for wheel type).

Frame Shape	Wheel Outer Diameter (D) type	Withstand Load/ Wheel quantity(kg)	Wheel Dimension Outer Diameter (D) × Width (W) × Shaft Diameter	Dead Load/1 m (kg)	Standard Length	Remark Wheel Type
SCA	36S	40	36 × 9×6	2.26	2000	Machined Wheel (S)
	36P	20	36 × 12×6	1.49		Press Wheel (P)
	40R	25	40 × 9×6	2.28	3000	Rubber Lining (R)
SCB	36S	40	36 × 9×6	2.53	2000	Machined Wheel (S)
	36P	20	36 × 12×6	1.76		Press Wheel (P)
	40R	25	40 × 9×6	2.55	Rubber Lining (R)	
SCH	25S	30	25.4× 9×6	1.82	1800	Machined Wheel (S)
	25P	15	25.4×7.5×6	1.82	2000	Press Wheel (P)
	30R	20	30 × 9×6	1.69	Rubber Lining (R)	
SCP	36CA	10	36 × 20×3.2	1.22	2000	Plastic wheel without anti-static agent (CA)
					2500	
					3000	

D	W	H	Catalog No.		Interval P	Overall length L
			Frame Shape	Wheel Type		
36	9	46	SCA	36S	50·75	L ≤ 3000
	12			36P		
40	9	48	SCB	40R	50·75	L ≤ 2000
36	9	—		36S		
40	9	—	SCH	36P	30·35	L ≤ 2000
25.4	9	30.7		40R		
25.4	7.5	—	SCP	25S	40·50	L ≤ 3000
30	9	33		25P		
36	20	—	30R	36CA		



Order

Catalog No. - P - *L
 Frame Shape | Wheel Type
 SCA | 36P - 50 - 2500

⚠ SCA, SBC, SCH and SPC are made to order.

* Determine the L dimension multiplying P (interval). When the standard length (above table) is not the multiplied number of interval, the interval is slightly adjusted.