

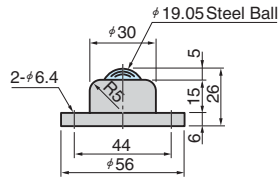
Planeveyor

BOTH UPWARD AND DOWNWARD FACING FLANGE TYPE, FLANGE DIRT REMOVAL TYPE

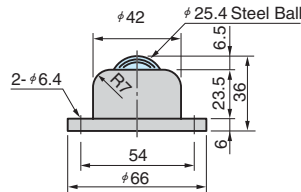
CAD FILE



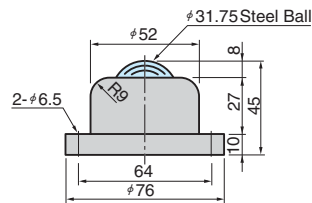
PVF50
PVFS50 (Stainless Steel Type)



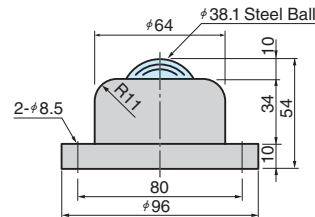
PVF120
PVFS120 (Stainless Steel Type)
PV FH120 (Dirt Discharge Type)



PVF160
PVFS160 (Stainless Steel Type)



PVF260
PVFS260 (Stainless Steel Type)
PV FH260 (Dirt Discharge Type)



Material : Cover Aluminum
Ball SUJ2
SUS440C

Refer to details from page 435 for the dirt removal type.

Load Capacity kgf	Weight g		Catalog No.	Nominal size
	PVF	PVFS		
50	109	115	PVF PVFS	50
120	258	259		120
160	495	498		160
260	886	888		260

Load Capacity kgf	Weight g	Catalog No.	Nominal size
120	255	PVFH	120
260	850		260



Order

Catalog No.	Nominal Size
PVF PVFH	50 260

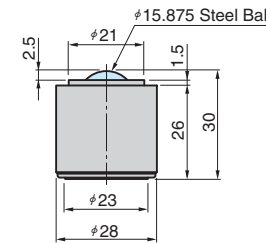
Planeveyor

BOTH UPWARD AND DOWNWARD SPRING CUSHION EMBEDDED TYPE

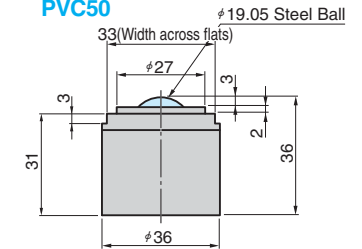
CAD FILE



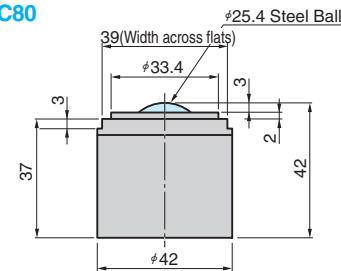
PVC20



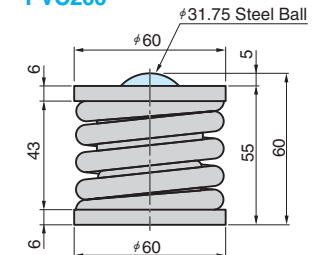
PVC50



PVC80



PVC200



Material : Cover Steel
Ball SUJ2

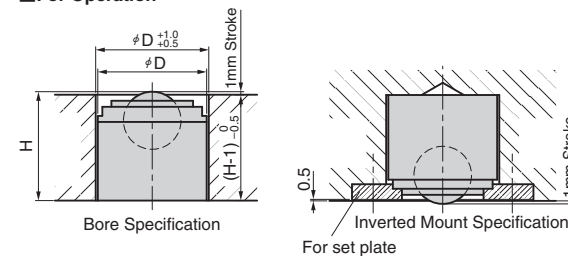
Load Capacity kgf	Weight g	Catalog No.	Nominal size
20	95	PVC	20
50	187		50
80	314		80
200	860		200



Order

Catalog No.	Nominal Size
PVC	200

For Operation



Be sure to set all of the planeveyors at the same height with 1mm stroke.