

APEHB (With Bracket)  
APEH (Without Bracket)

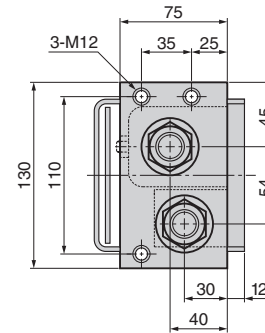
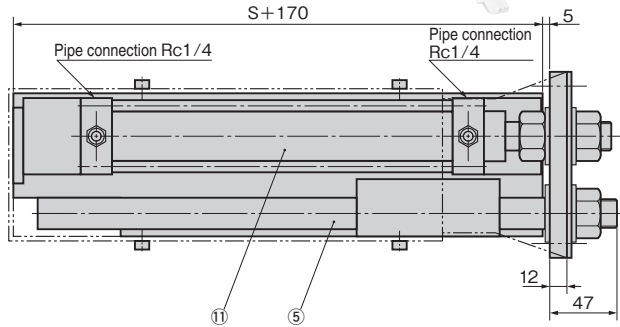
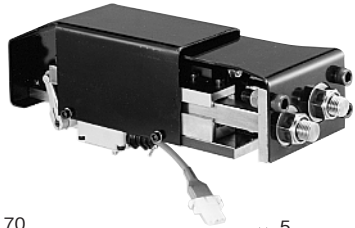
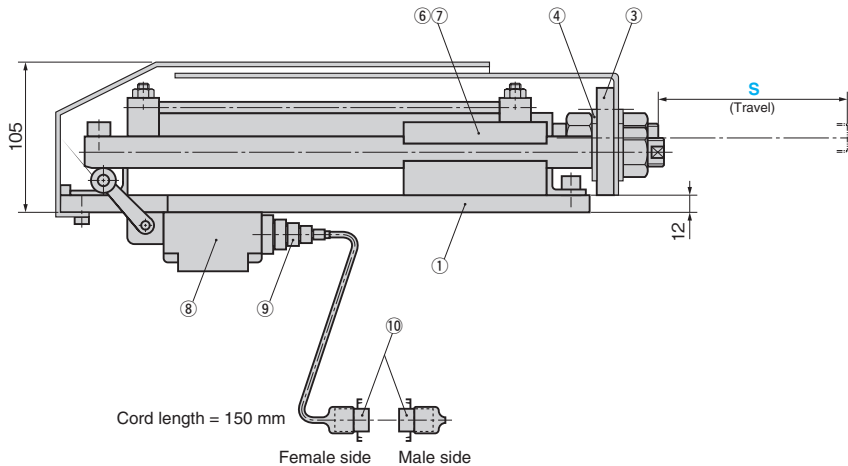
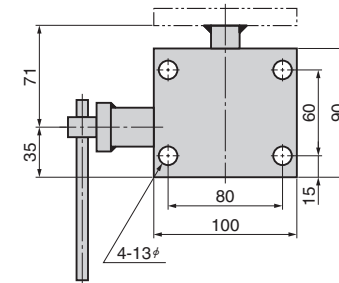
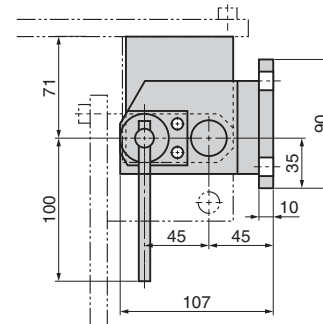


Table of Components

No.	Description	Qty	Material and Remark
①	Base plate	1	SS400
②	Bracket	1	SS400
③	Connector Plate Mounting Board	1	SS400
④	Collar	1	SS400
⑤	Guide Pin	1	S45C □22
⑥	Guide Holder (upper)	1	Bronze with Graphite (SO#50 SP2)
⑦	Guide Holder (lower)	1	Bronze with Graphite (SO#50 SP2)
⑧	Limit Switch	1	1LS2-J/WL-1A200 By Yamatake
⑨	CAPCON (cable clamp)	1	0A-1 By Ohm Electric
⑩	Nylon Connector Set	1	D-NLCS-1941-3P/R
⑪	Air Cylinder	1	D-MCY-F-40 By Taiyo



Bracket (2) KSCH



Catalog No.	Travel S
	150
	200
<b>APEHB</b> (With Bracket)	250
<b>APEH</b> (Without Bracket)	300
	350
	400
	500



Order

Catalog No.	S
<b>APEHB</b>	250



Made to order.

Bracket

Catalog No.
<b>KSCH</b>



Order

Catalog No.
<b>KSCH</b>

For operation

- When the bracket is used, the pusher can be folded for storage.
- Since the guide pin is square shaped, it does not turn.
- Type with or without bracket can be selected.
- When the unit is assembled to the die, weld the bracket to the desired position of the base plate.



Refer to page 433-434 for the pusher spring head and the connector plate.