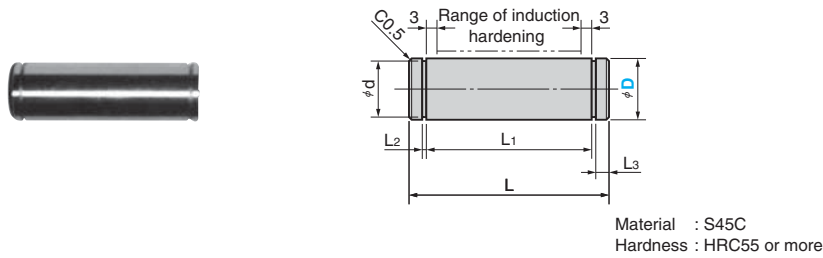


# Bell Crank Lifter Components

FOR BELL CRANK LIFTER UNIT

## Joint Pin

SBJP

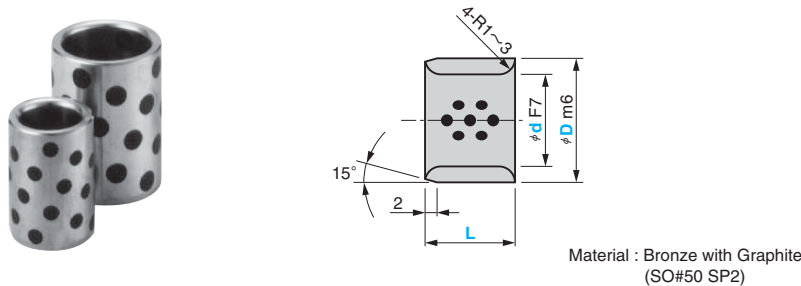


Catalog No.	D Tolerance	d Tolerance	L	L1	L2 Tolerance	L3	Applicable Cylinder Diameter
SBJP	16	$\begin{matrix} 0 \\ -0.027 \end{matrix}$	53	46.5	$\begin{matrix} 1.15 \\ +0.14 \\ 0 \end{matrix}$	2.7	φ63
	20	$\begin{matrix} 0 \\ -0.033 \end{matrix}$	65	56.5	$\begin{matrix} 1.35 \\ +0.14 \\ 0 \end{matrix}$	2.9	φ80, 100, 125



## Joint Bushing

SOB



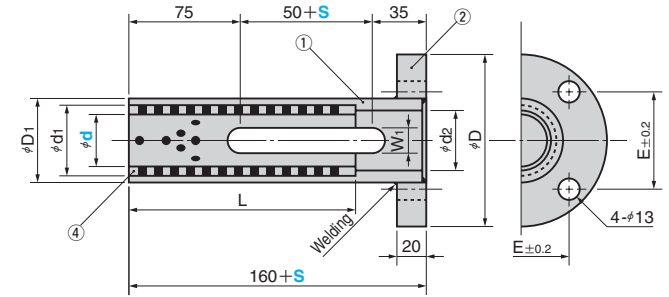
d	F7	D	m6	Catalog No.	d	D	L
16	$\begin{matrix} +0.034 \\ +0.016 \end{matrix}$	22	$\begin{matrix} +0.021 \\ +0.008 \end{matrix}$	SOB	16	22	16
20	$\begin{matrix} +0.041 \\ +0.020 \end{matrix}$	28			20	28	20



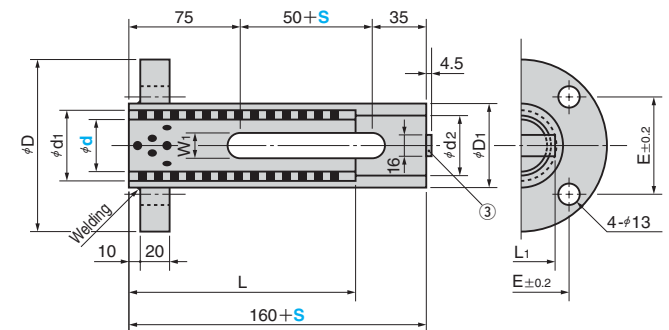
# OILLESS Bush Holder Set

FOR BELL CRANK LIFTER UNIT

SBBHSA



SBBHSB



\*S refers to travel.

Material : ① STB33  
②③ SS400  
④ FC250  
with Graphite

Catalog No.	d Tolerance	Travel S In increments of 1 mm	D	D1	d1	d2	L		W1	E	L1
							S ≤ 200	200 < S ≤ 350			
SBBHSA	35	$\begin{matrix} +0.10 \\ +0.05 \end{matrix}$	116	54	44	40			18	64	45
SBBHSB	50	$\begin{matrix} +0.10 \\ +0.05 \end{matrix}$	135	76.2	62	60.2	150	200	23	78	70



⚠ SBBHSA and SBBHSB are made to order.