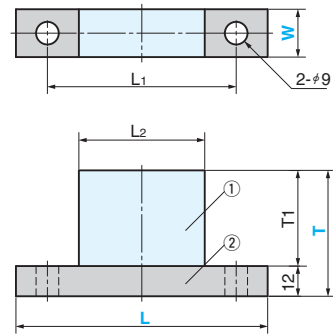
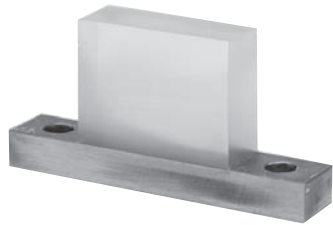


Urethane For Lifter

URETHANE FOR LIFTER

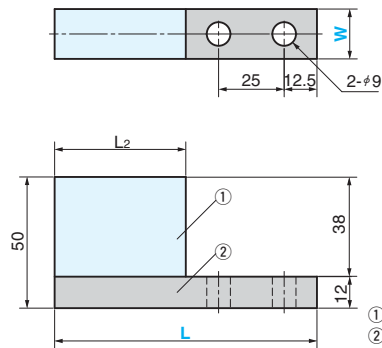
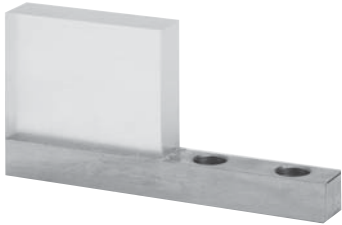
NEW CAD FILE

LGCUT (Both end type)



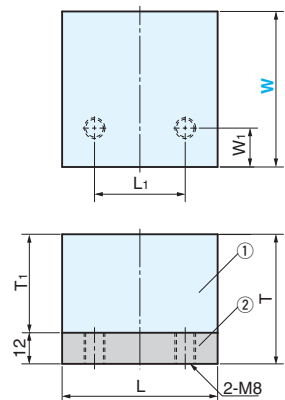
① Urethane Shore A70
② SS400

LGCUC (One end type)



① Urethane Shore A70
② SS400

LGCUB (Block Type)



① Urethane Shore A70
② SS400

L1	L2	T1	Catalog.No	W	L	T
75	50			12	100	50
75	50	38			100	
125	100				150	50
175	150				200	
75	50		LGCUT	19	100	
125	100	88			150	100*
175	150				200	
125	100	38		38	150	50
175	150				200	



Order

Catalog No.	W	L	T
LGCUT	19	150	50

■ Cutting range of LGCUT



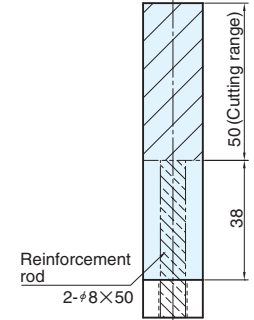
Since T=100 has a reinforcement rod, be careful for the cutting range. (Refer to the figure on the right)

L2	Catalog.No	W	L
50		12	100
50	LGCUC	19	100
100		19	150



Order

Catalog No.	W	L
LGCUC	19	100



Reinforcement rod
2-#8×50
When L=100, the reinforcement rod is one.

L	T	L1	W1	T1	Catalog.No	W
50	50	30	10	38		50
60	50	35	15			60
70	75	40	20		LGCUB	70
90	75	50	30	63		90
120	75	60	45			120



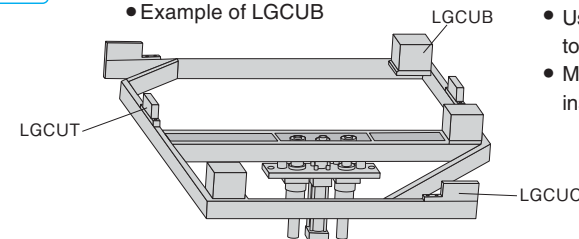
Order

Catalog No.	W
LGCUB	60



Example

• Example of LGCUB



- Use it on the lifter arm to prevent damage to outer panels.
- Mount the angle piece on the lifter arm and install LGCUB on top.