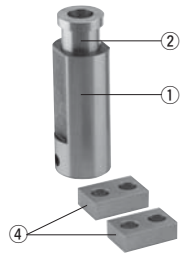


Lifter Guide Post Set

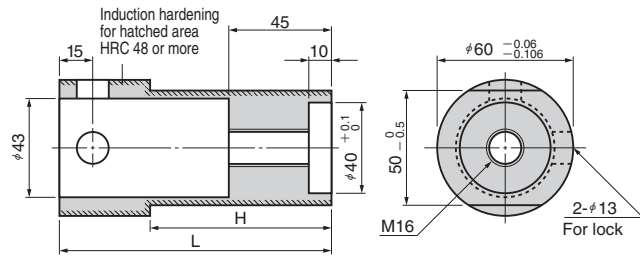
FOR LIFTER BAR



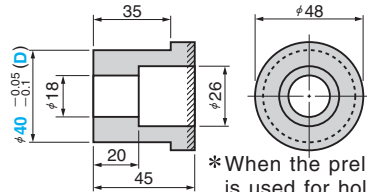
LGPBS (Floating type) (①②④)



① Lifter guide post LGPB



② Stopper block LSB



*When the preliminary pin is used for holding, flame harden the hatched area.

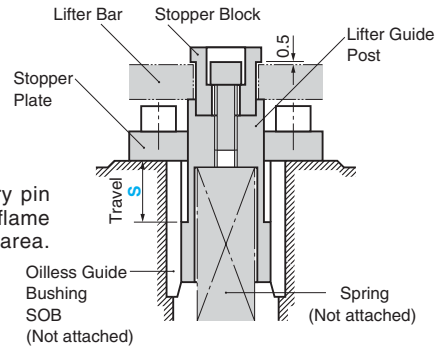
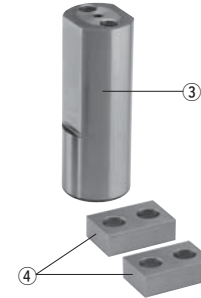


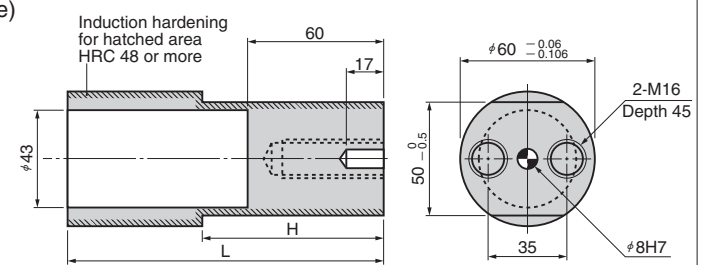
Table of LGPBS Components

No.	Catalog No.	Qty	Material and Remark
①	LGPB	1	S45C HRC48 or more
②	LSB	1	S45C with Bolts
④	LPST	2	S45C

LGPKS (Dowel pin locating type) (③④)



③ Lifter guide post LGPK



④ Stopper plate LPST

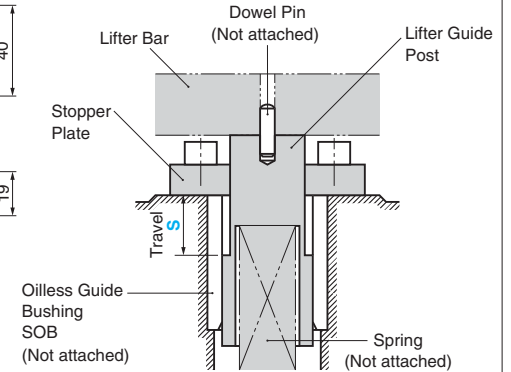
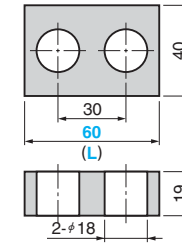


Table of LGPKS Components

No.	Catalog No.	Qty	Material and Remark
③	LGPK	1	S45C HRC48 or more
④	LPST	2	S45C

L	H	Catalog No.	S
120	80	LGPBS LGPB	40
140	100		60
160	120		80

Order	Catalog No.	S
	LGPBS	40
	LGPB	60

Catalog No.	(D)	Order	Catalog No.	(D)
LSB	40		LSB	40

Catalog No.	(L)	Order	Catalog No.	(L)
LPST	60		LPST	60

For Operation

- Set the lifter bar and the stopper block so that the clearance may be 0.5 mm. This eliminates adjustment of interval accuracy between each post.
- This is used at the center of the transfer die and the progressive die.
- Standard travels are 40, 60 and 80. Other travels less than 80 mm are available.
- Since the lock hole is provided, the unit can be locked at the bottom dead center.

L	H	Catalog No.	S
140	80	LGPKS	40
160	100	LGPK	60

Order	Catalog No.	S
	LGPKS	60
	LGPK	40

Refer to the previous page for LPST.

Recommended Oiless Guide Bushing SOB

Catalog No.	S	Applicable Bushing	Catalog No.	S	Applicable Bushing
LGPBS	40	SOB60-74-60	LGPKS	40	SOB60-74-60
	60	SOB60-74-80		60	SOB60-74-80
	80	SOB60-74-100			

For Operation

- Only adjustment of the dowel pin interval can achieve the accuracy.
- Use two lifter guide posts for one lifter bar.
- This is used for the side area in the progressive die.
- Standard travels are 40 and 60. Other travels less than 60 mm are available.