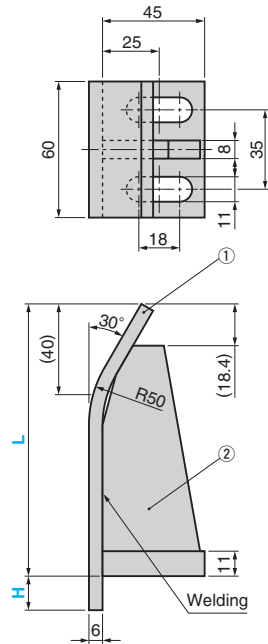


Nest Gauge

PLATE TYPE

CAD FILE

NTGP
NTGPM (with Plating)



Material : ① SS400
② SS400
Accessory : Hexagon Socket Head Bolt M10×30 2 pieces
Washer For M10 2 pieces

Catalog No.	L Increments of 5 mm	H Increments of 5 mm
NTGP	80~140	0~80
NTGPM	145~200	0~80



Order

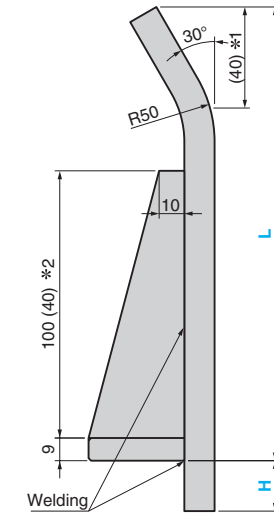
Catalog No.	L	-	H
NTGP	120	-	0

Rough Gauge

ROD TYPE

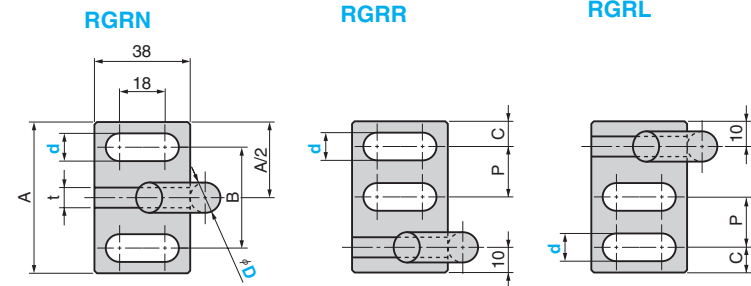
CAD FILE

RGRN
RGRR (Offset Type)
RGRL (Offset Type)



*1 (40) is the dimension before machining.
*2 (40), height of the backup plate, is for $L \leq 160$.

Material : SS400
Accessory : Hexagon Socket Head Bolt M10(M12) × 30 2 pieces
Washer for M10(M12): 2 pieces



A	B	P	C	t	Catalog No.	D	L Increments of 5 mm	H Increments of 5 mm	d
60	40	20	10	6	RGRN	10	65~200	0~80	11
				9	RGRR	12			13
					RGRL	16			
75	50	25	12.5	16	RGRL	20			13



Order

Catalog No.	D	-	L	-	H	-	d
RGRR	12	-	200	-	40	-	13