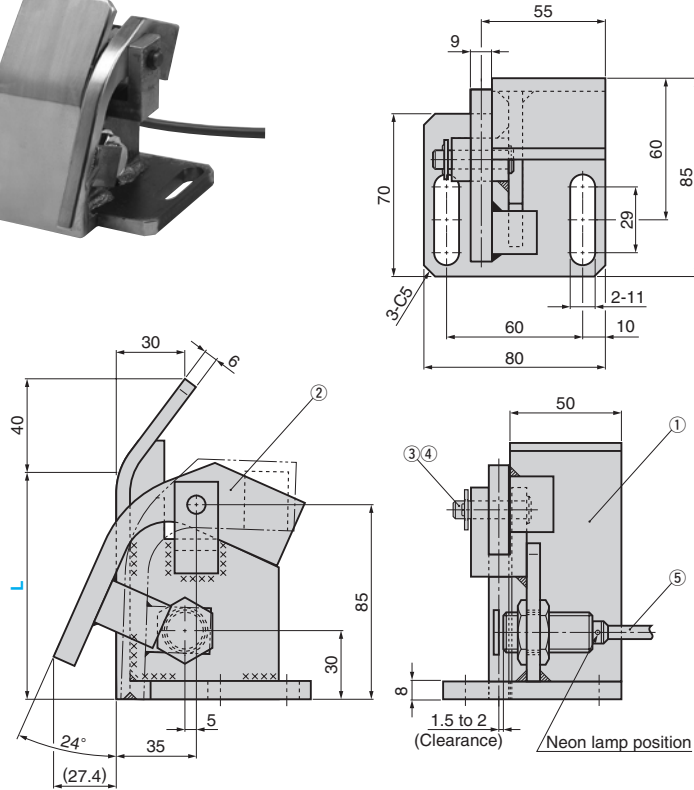
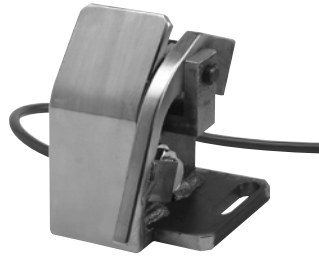


# Panel Input Detector Gauge

PROXIMITY SWITCH TYPE

CAD  
FILE

STKSL(L Type)  
STKSR(R Type)



\* This figure shows the L type.  
\* The lead wire length is 5 m.

## Table of Components

No.	Description	Qty	Material and Remark	No.	Description	Qty	Material and Remark
①	Gauge	1	SS400 plating	⑤	Proximity switch (Selection of Type)	(1)	E2E-X5Y1-MR(For AC)
②	Loading Detection Lever	1	SS400 plating				E2E-X5E1-5M(For DC)
③	Clevis Pin	1	S45C HRC40~45				IG0348(For EC)
④	E Type Retaining Ring	2	For #8				

\*Proximity switch E2E type is made by Omron and IG0348 is made by EFECTOR.

Weight kg	Catalog No.	L	Switch Type
1.5	STKSL STKSR	75	AC(common for 100V and 200V)
1.6		100	DC(for 24V)
1.8		150	EC(EFECTOR connector)

Order 

Catalog No.	L	SW
STKSL	100	AC

Option	Option Code	Specification
	M12	Mounting bolt hole width is changed to 13 (for M12).

Order 

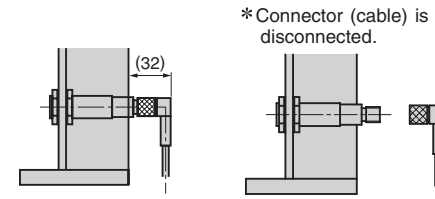
STKSL100 - AC - M12
---------------------

EX Example

### EFECTOR Connector (IG0348, UL Standard)

- Operation power voltage  
AC/DC (common) 20V ~ 250V
- Connector type (with Prevention mechanism from loosening)  
Since the cable can be removed, replacement of the switch or wiring for adjustment is not required.(figure below)

### EFECTOR's Switch Mounting



\* Connector (cable) is disconnected.